

17
SECTION

19
TOWN

06
RANGE

ADAMS COUNTY

COUNTY CORNER NO: 56

ROMPORTOL ID: 41906172000

PUBLIC LAND SURVEY MONUMENT RECORD

TYPE OF MONUMENT: HARRISON
ADAMS COUNTY COORDINATES, NAD 83 (2007)

N. 274404.048

E. 536078.031

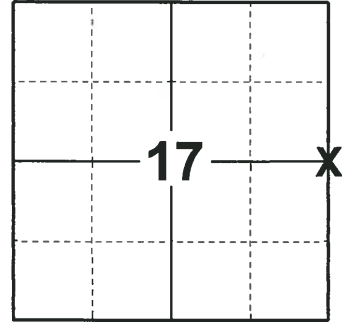
ELEVATION- DATUM

FIELD WORK DATE: 12/05/2018

BASIS FOR MONUMENT LOCATION

1971 - PLS 981 FOUND A 2" IRON PIPE. SET HARRISON MONUMENT AND TIED OUT.

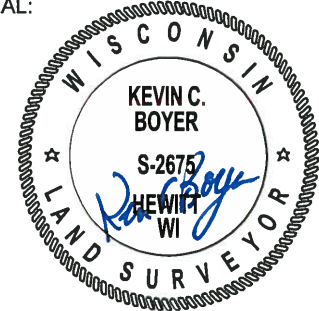
2018 - PLS 2675 FOUND A HARRISON MONUMENT 12" BELOW THE GROUND SURFACE AND 2 WITNESSES. THE MONUMENT AGREES WITH THE EXISTING WITNESSES. ACCEPTED THE HARRISON MONUMENT AS THE CORNER LOCATION. SET 4 NEW TIES AND MEASURED TO THE TIES AND WITNESSES.



LOCATION

(INDICATE CORNER BY "X")

SEAL:



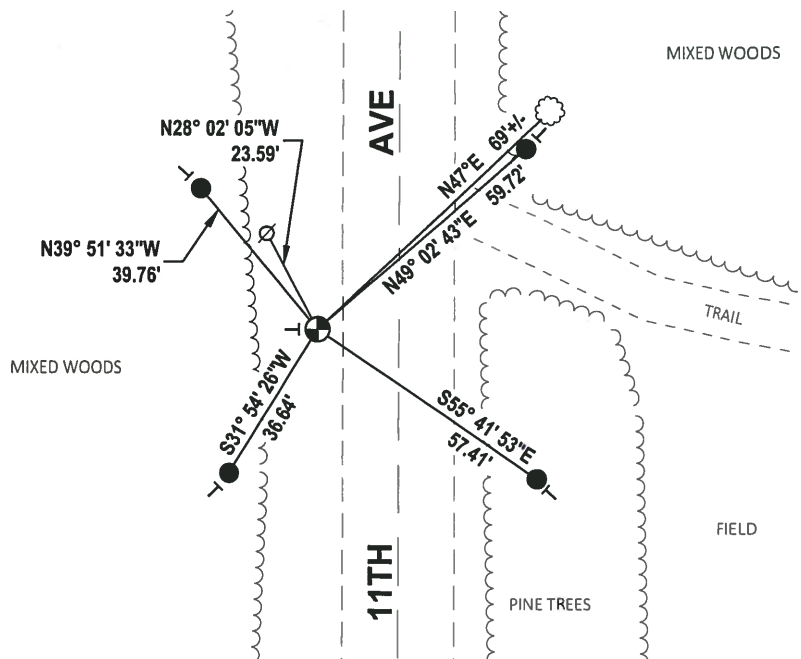
DATA SHOWN HERE ON THIS TIE SHEET IS CORRECT AND COMPLETE TO THE BEST OF MY KNOWLEDGE AND BELIEF.

PROFESSIONAL LAND SURVEYOR

DATE 1-18-19

TIE SKETCH

NOTE: THE CORNER FALLS 17± EAST OF THE CENTERLINE OF 11TH AVE.



- SET 3/4" x 18" IRON REBAR, 1.50#/FT
- ⊙ FOUND HARRISON MONUMENT
- ∅ WITNESS POWER POLE
- ┊ VINYL "T" POST
- ⊙ WITNESS TREE

ADAMS COUNTY

Survey Monument Record

TYPE OF MONUMENT: 30" HARRISON

STATE PLANE COORDINATES: N _____

E _____

ELEVATION — M.S.L. DATUM: _____

THETA ANGLE: _____

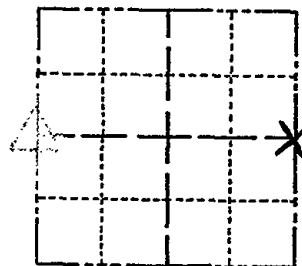
FIELD BOOK: 104 PAGE 103

CORNER NO. 74

SECTION 17

TOWN 19

RANGE 6



LOCATION
(Indicated by 'X')

SEAL: _____

BASIS FOR MONUMENT LOCATION

(Use reverse side if necessary)

Show info such as: History of corner, with reference to Vol. and pg, dates, surveyor; exact description of monument replaced; if location computed, by taped or EDM traverse; landowner remarks, etc.

Found 2" iron pipe and set monument

November 23, 1971

Sam T. Mullen R.L.S. S-981

OK 11-21-78 DA SS
 3-24-83 GR-SS 2 NEW TIES
 2-NEW TIES, MON OK - 10/5/92 - JG
 OK, 2-11-98 - JG
 1-GONE, 1-NEW, MON. OK, 1-6-03 - JG
 2-12/08 OK GR

CERTIFIED CORRECT:

Registered Land Surveyor

DATE: _____

TIE SKETCH

(Show at least four ties)

