

16
SECTION

19
TOWN

06
RANGE

ADAMS COUNTY

COUNTY CORNER NO: 57

ROMPORTOL ID: 41906162000

PUBLIC LAND SURVEY MONUMENT RECORD

TYPE OF MONUMENT: HARRISON
ADAMS COUNTY COORDINATES, NAD 83 (2007)

N. 274388.094

E. 541320.514

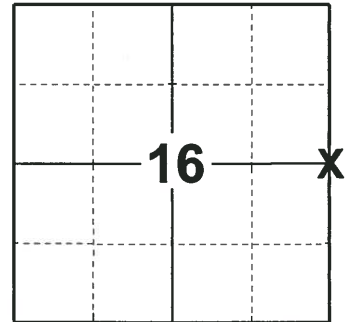
ELEVATION- DATUM

FIELD WORK DATE: 12/04/2018

BASIS FOR MONUMENT LOCATION

1977 - PLS 878 EXCAVATED WITH BACKHOE. FOUND STAIN FROM BOTTOM 24" OF DUG IN POINTED 3" DIAMETER WOOD POST. MONUMENTED THAT POINT WITH A HARRISON MONUMENT. LOCATION VERIFIED BY EDM TRAVERSE. NO RESURVEYS ON RECORD. SET HARRISON AND TIED OUT.

2018 - PLS 2675 FOUND A HARRISON MONUMENT IN ROAD SURFACE AND 2 TIES. THE MONUMENT AGREES WITH THE EXISTING TIES. ACCEPTED THE HARRISON MONUMENT AS THE CORNER LOCATION. SET 2 NEW TIES AND MEASURED TO THE TIES.



LOCATION
(INDICATE CORNER BY "X")

SEAL:



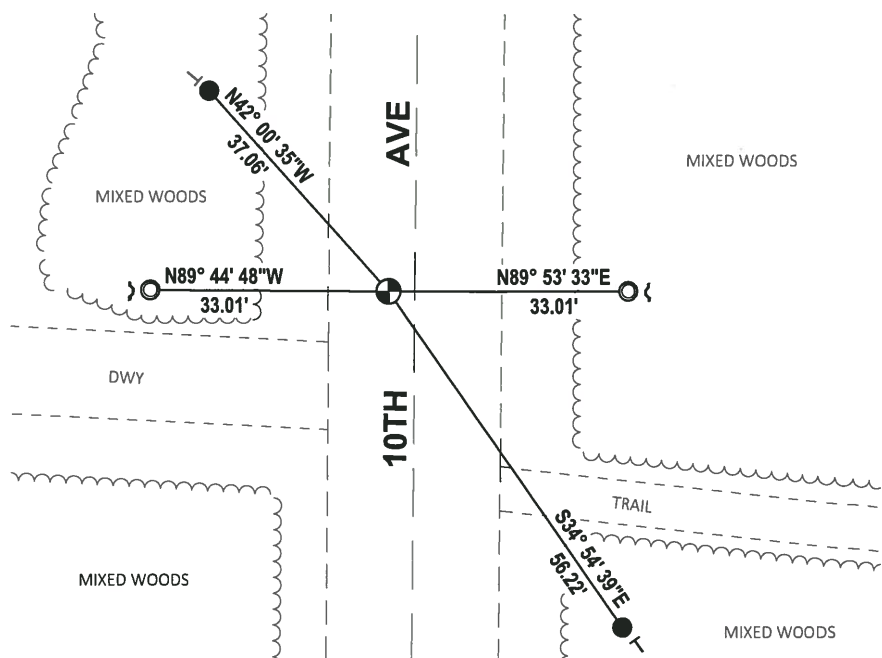
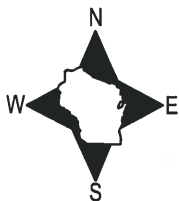
DATA SHOWN HERE ON THIS TIE SHEET IS CORRECT AND COMPLETE TO THE BEST OF MY KNOWLEDGE AND BELIEF.

PROFESSIONAL LAND SURVEYOR

DATE 1-18-19

TIE SKETCH

NOTE: THE CORNER FALLS 7± WEST OF THE CENTERLINE OF 10TH AVE.

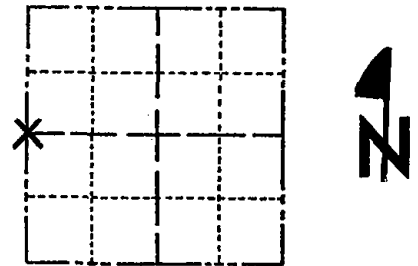


- SET 3/4" x 18" IRON REBAR, 1.50#/FT
- FOUND 1-1/4" O.D. IRON PIPE
- ⊙ FOUND HARRISON MONUMENT
- ↗ STEEL FENCE POST
- VINYL "T" POST

Government Land Corner Certificate

ADAMS County
 TYPE OF MONUMENT: HARRISON
 STATE PLANE COORDINATES: N _____
 E _____
 ELEVATION — M.S.L. DATUM: _____
 THETA ANGLE: _____
 FIELD BOOK: 101 PAGE 82
 DRAWN BY: LANCE HABECK

CORNER NO. 57
 SECTION 15
 TOWN 19 N
 RANGE 6 E



LOCATION
(Indicated by 'X')

SEAL:



Excavated with backhoe. Found stain from bottom 24" of dug in pointed 3" diameter wood post. Monumented that point with a Harrison monument. Location verified by EDM traverse. No resurveys on record.

DATA SHOWN HERE ON
CERTIFIED CORRECT:

Anthony B. Kiedrowski
 Registered Land Surveyor

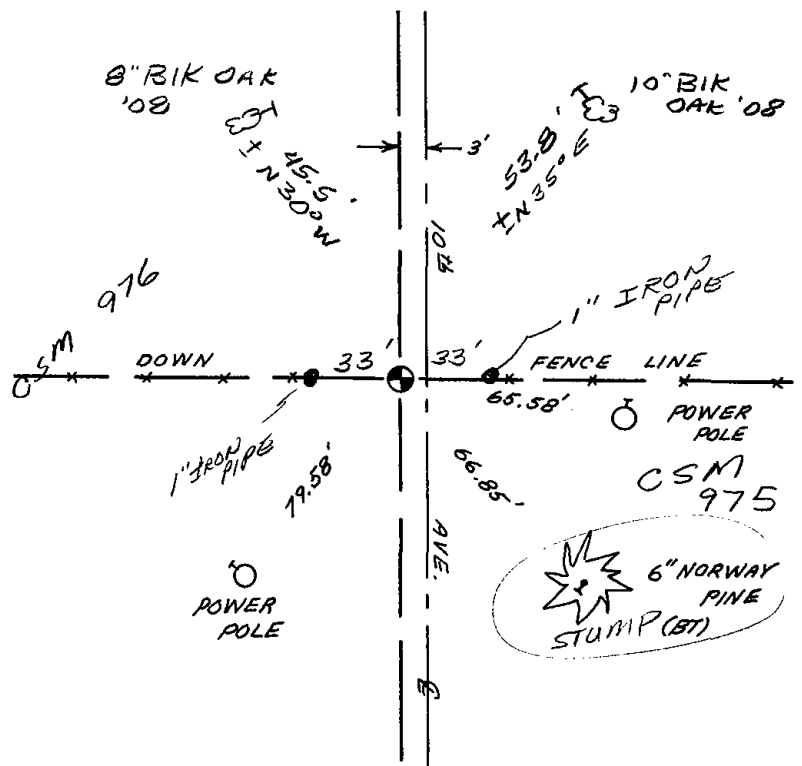
DATE: 5/26/77

OK 11-27-78 RN-DA

TIE SKETCH

Show at least four ties, also fence lines, roads, topo, size and type of witness trees and if off road - best way to arrive at corner.

Ties to nail & disc.



MAINTENANCE RECORD

Date	Init.	Remarks
3-10-83	GR-SS	OK
1-4-93	JG-B5	OK
2-13-98	JG	OK
1-6-03	JG	OK
7-31-08	ETS	2 NEW TIES