

14
SECTION

19
TOWN

06
RANGE

ADAMS COUNTY

COUNTY CORNER NO: 59

ROMPORTOL ID: 41906142000

PUBLIC LAND SURVEY MONUMENT RECORD

TYPE OF MONUMENT: HARRISON (BROKEN-TOP)
ADAMS COUNTY COORDINATES, NAD 83 (2007)

N. 274407.736

E. 551904.978

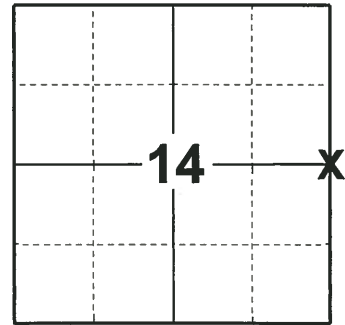
ELEVATION- _____ DATUM _____

FIELD WORK DATE: 12/04/2018

BASIS FOR MONUMENT LOCATION

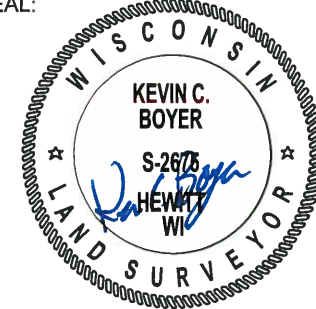
1977 - PLS 1103 RAN EDM/T2 TRAVERSE AROUND SECTION 13 AND MANY ADJACENT SECTIONS TO DETERMINE SEARCH AREA FOR INVESTIGATION. EXCAVATION WITH A BACKHOE BY ANTHONY KIEDROWSKI, ADAMS COUNTY SURVEYOR, YIELDED NO EVIDENCE OF THE ORIGINAL CORNER OR ANY REMONUMENTATION. FOUND NO EVIDENCE OF ANY BEARING TREES. CALCULATED THE CORNER LOCATION BY SINGLE PROPORTIONATE MEASURE ON LINE BETWEEN ADJACENT SECTION CORNERS. FOUND NO RECORD ON THE CAPPED-PIPE NORTHWEST OF SAID CORNER. SET A HARRISON MONUMENT AT THE CALCULATED LOCATION. NOTE BY A. KIEDROWSKI: THE CAPPED PIPE REFERRED TO WAS STAMPED 1/4 COR AND WAS 12" LONG AND STUCK ONLY 6" INTO THE GROUND. COULD NOT ACCEPT AS THE CORNER DUE TO ITS LOCATION AND SIZE.

2018 - PLS 2675 FOUND A HARRISON MONUMENT WITH A BROKEN-TOP 14" BELOW THE ROAD SURFACE, 3 TIES AND 1 PROPERTY IRON. THE MONUMENT AGREES WITH THE EXISTING TIES. ACCEPTED THE HARRISON MONUMENT AS THE CORNER LOCATION AND MEASURED TO THE EXISTING TIES AND PROPERTY IRON.



LOCATION
(INDICATE CORNER BY "X")

SEAL:



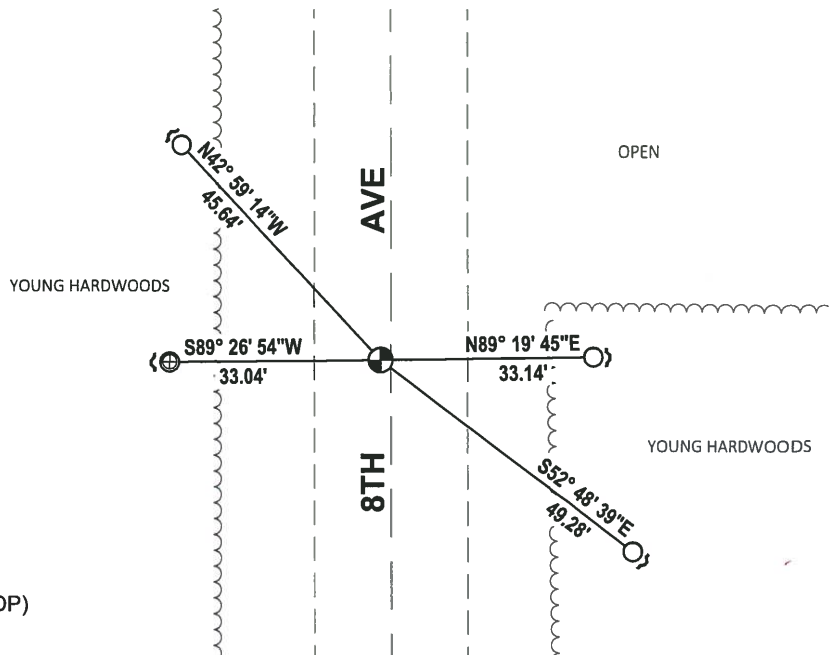
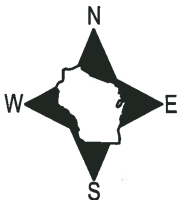
DATA SHOWN HERE ON THIS TIE SHEET IS CORRECT AND COMPLETE TO THE BEST OF MY KNOWLEDGE AND BELIEF.

PROFESSIONAL LAND SURVEYOR

DATE 1-18-19

TIE SKETCH

NOTE: THE CORNER FALLS 2± WEST OF THE CENTERLINE OF 8TH AVE.

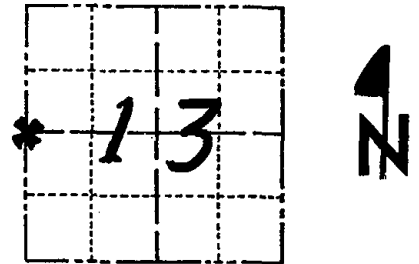


- FOUND 3/4" IRON ROD
- ⊕ FOUND 1" IRON ROD
- ⊕ FOUND HARRISON MONUMENT (BROKEN-TOP)
- ~ STEEL FENCE POST

Government Land Corner Certificate

ADAMS County
 TYPE OF MONUMENT: HARRISON STD.
 STATE PLANE COORDINATES: N _____
 E _____
 ELEVATION — M.S.L. DATUM: _____
 THETA ANGLE: _____
 FIELD BOOK: 54 PAGE 35
 DRAWN BY: SCOTT SORENSEN

CORNER NO. 59
 SECTION 13
 TOWN 19
 RANGE 6



LOCATION
(Indicated by 'X')

BASIS FOR MONUMENT LOCATION

Show info such as: History of corner, with reference to Vol. and pg., dates, surveyor; exact description of monument replaced; if location computed, by taped or EDM traverse; landowner remarks, etc. (Use reverse side if necessary)

Ran EDM/T2 traverse around Section 13 and many adjacent sections to determine search area for investigation.

Excavation with backhoe by Anthony Kiedrowski, Adams County Surveyor, yielded no evidence of the original corner or any remonumentation. Could find no evidence of any bearing trees.

Relocated corner by single proportionate measure on line between adjacent section corners.

Could find no record on the capped-Pipe Northwest of said corner.

Monument set 9-12-1977.

Note by A.Kiedrowski. The capped pipe referred to was stamped 1/4 cor and was only 12" * long and stuck only 6" into ground. Could not accept it as the corner due to its location and size.

SEAL:



DATA SHOWN HERE ON
CERTIFIED CORRECT:

Dale C. Hagen
Registered Land Surveyor

DATE: December 27, 1977

TIE SKETCH

Show at least four ties, also fence lines, roads, topo, size and type of witness trees' and if off road - best way to arrive at corner.

NOTE

Ties in trees to nail in disc.

2008 SET 3/4" RODS

70.83 ± N 28° E

45.60 ± N 43° W

49.28 ± S 37° E

FO STEEL POST EAST 24.97'

MAINTENANCE RECORD

Date	Init.	Remarks
11-24-78	SS-DA	OK
3-10-83	GR-SS	OK
2-13-98	JG	1-GONE, 4-LEFT
1-24-03	JG	OK
8-11-08	KS-SS	SET 3/4" RODS

