

17
SECTION

19
TOWN

06
RANGE

ADAMS COUNTY

COUNTY CORNER NO: 64

ROMPORTOL ID: 41906170020

PUBLIC LAND SURVEY MONUMENT RECORD

TYPE OF MONUMENT: SURVEY NAIL
ADAMS COUNTY COORDINATES, NAD 83 (2007)

N. 271722.230

E. 533437.811

ELEVATION- DATUM

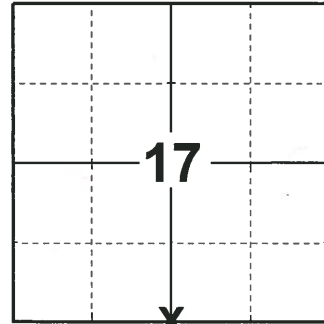
FIELD WORK DATE: 12/05/2018

BASIS FOR MONUMENT LOCATION

1971 - PLS 981 FOUND NAIL AND SET HARRISON MONUMENT.

2008 - PLS 1452 FOUND RR SPIKE ON 9-8-2008, PRIOR TO 2008 RESURFACING PROJECT. SET NEW REFERENCE MONUMENTS (4" ALUM. DISKS SET IN CONCRETE) ON 10-2-2008. RESET SECTION CORNER ON 11-3-2008 AND MEASURED TIES.

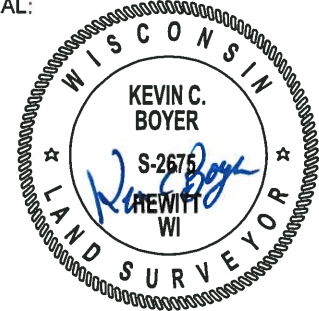
2018 - PLS 2675 FOUND A SURVEY NAIL IN THE ROAD SURFACE AND 4 TIES. REMOVED NAIL AND FOUND NO OTHER EVIDENCE OF ANY ADDITIONAL MONUMENTS BELOW. THE SURVEY NAIL LOCATION AGREES WITH THE EXISTING TIES. ACCEPTED THE SURVEY NAIL LOCATION AS THE CORNER. RE-SET THE SURVEY NAIL AND RE-MEASURED TO THE EXISTING TIES.



LOCATION

(INDICATE CORNER BY "X")

SEAL:



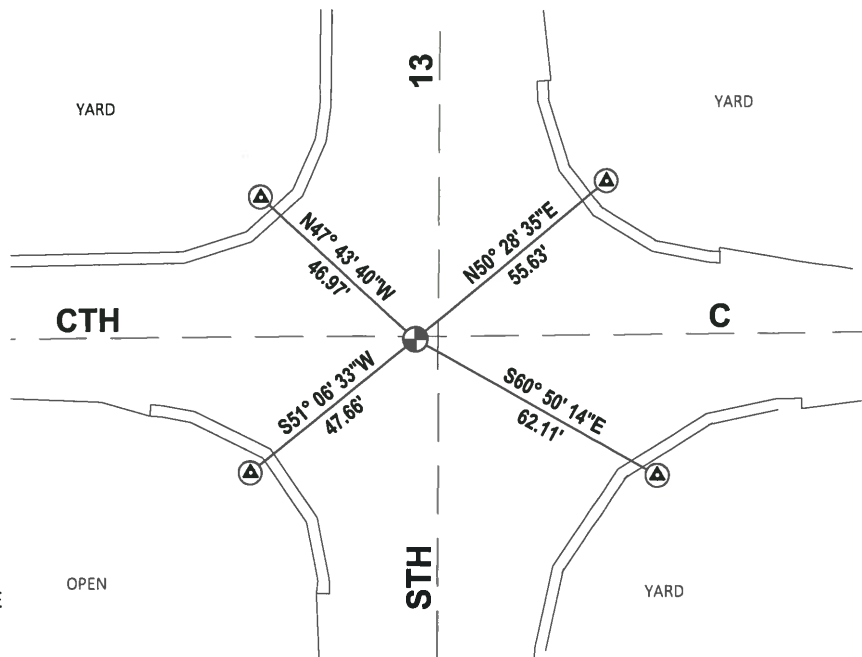
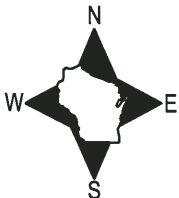
DATA SHOWN HERE ON THIS TIE SHEET IS CORRECT AND COMPLETE TO THE BEST OF MY KNOWLEDGE AND BELIEF.

PROFESSIONAL LAND SURVEYOR

DATE 1-18-19

TIE SKETCH

NOTE: THE CORNER FALLS 1'± SOUTH OF THE CENTERLINE OF CTH C AND 5'± WEST OF THE CENTERLINE OF STH 13.



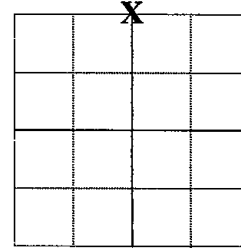
- ⊕ FOUND WISDOT ALUM DISK IN CONCRTE
- ⊙ FOUND SURVEY NAIL

ADAMS COUNTY

Survey Monument Record

TYPE OF MONUMENT: Berntsen Nail
 STATE PLANE COORDINATES: N _____
 E _____
 ELEVATION — M.S.L. DATUM: _____
 THETA ANGLE: _____
 FIELD BOOK: _____ PAGE _____
 DRAWN BY: D. Christie

CORNER NO. 64
 SECTION 20
 TOWN 19 N
 RANGE 6 E



LOCATION
(Indicated by 'X')

BASIS FOR MONUMENT LOCATION

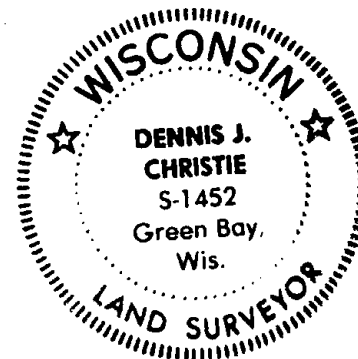
(Use reverse side if necessary)

Show info such as: History of corner, with reference to Vol. and pg. dates, surveyor; exact description of monument replaced; if location computed, by taped or EDM traverse; landowner remarks, etc.

Found RR spike on 9-8-2008, prior to 2008 Resurfacing Project. Set new reference monuments (4" Alum. Disks set in concrete) on 10-2-2008. Re-set section corner on 11-3-2008 and measured Ties.

SEE SAM T. MULLEN TIE SHEET 11-18-71

SEAL:



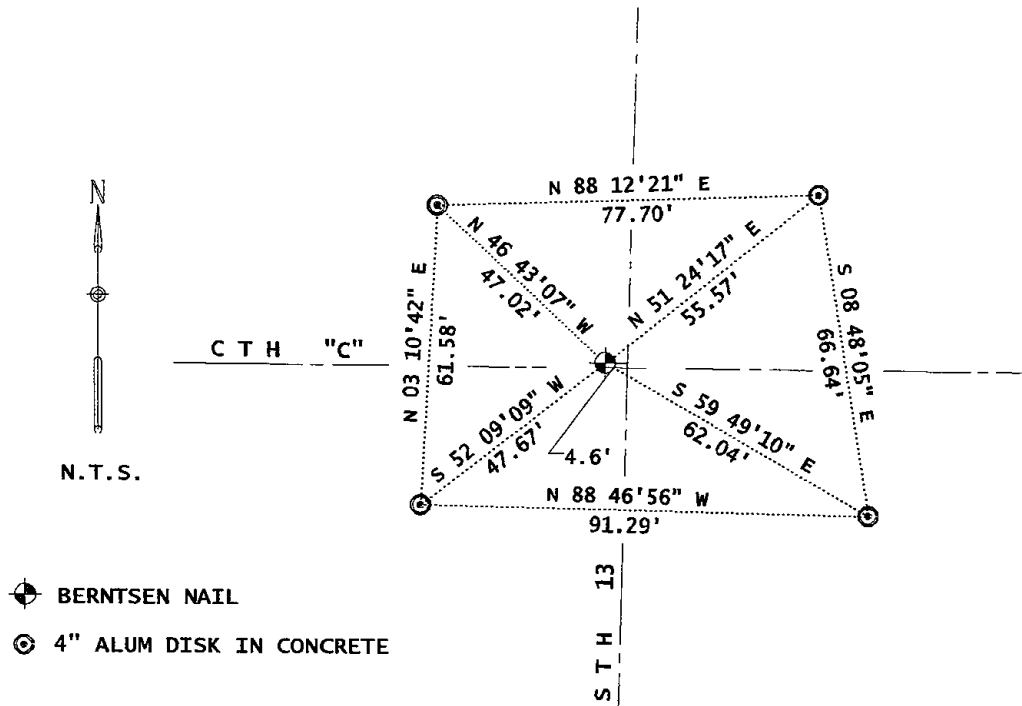
CERTIFIED CORRECT

Dennis J. Christie
 Registered Land Surveyor

Date: 12-12-2008

TIE SKETCH

(Show at least four ties)



ADAMS COUNTY

Survey Monument Record

TYPE OF MONUMENT: 30" HARRISON

STATE PLANE COORDINATES: N _____

E _____

ELEVATION — M.S.L. DATUM: _____

THETA ANGLE: _____

FIELD BOOK: 104 PAGE 95

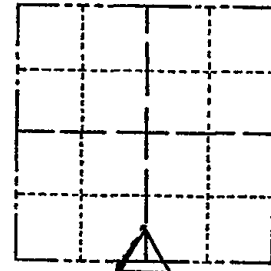
CORNER NO. 66

SECTION 17

TOWN 19

RANGE 6

64



LOCATION (Indicated by 'X')

SEAL:

BASIS FOR MONUMENT LOCATION

(Use reverse side if necessary)

Show info such as: History of corner, with reference to Vol. and pg, dates, surveyor; exact description of monument replaced; if location computed, by taped or EDM traverse; landowner remarks, etc.

Found nail and set monument

November 18, 1971

Sam T. Mullen R.L.S. S-981

CERTIFIED CORRECT:

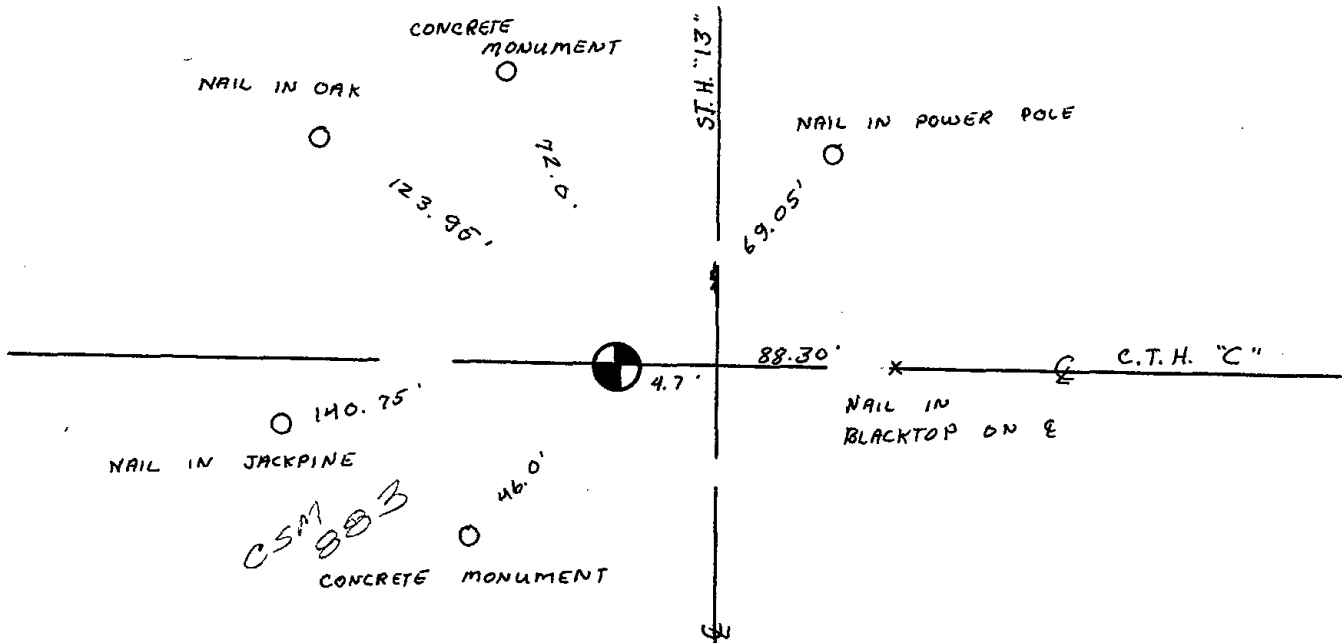
Registered Land Surveyor

DATE: _____

TIE SKETCH

(Show at least four ties)

3-11-83 6R-55 OK



ADAMS COUNTY

Survey Monument Record

TYPE OF MONUMENT: RR SPIKE

STATE PLANE COORDINATES: N _____

E _____

ELEVATION — M.S.L. DATUM: _____

THETA ANGLE: _____

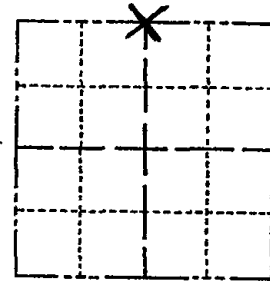
FIELD BOOK: 108 PAGE 117

CORNER NO. 66 (64)

SECTION 20

TOWN 19

RANGE 6



LOCATION (Indicated by 'X')

SEAL:

BASIS FOR MONUMENT LOCATION

(Use reverse side if necessary)

Show info such as: History of corner, with reference to Vol. and pg, dates, surveyor; exact description of monument replaced; if location computed, by taped or EDM traverse; landowner remarks, etc.

2 TIES GONE, 2-NEW TIES 8.19.92 JG-BS

2-GONE, 3-NEW 4/24/98 JG-SS

OK, 11-14-07- JG-SS

SEE SAM T. MULLEN TIE SHEET 11-18-71

CERTIFIED CORRECT:

Registered Land Surveyor

DATE: _____

TIE SKETCH

(Show at least four ties)

