

15 SECTION 19 TOWN 06 RANGE

ADAMS COUNTY

COUNTY CORNER NO: 68
ROMPORTOL ID: 41906150020

PUBLIC LAND SURVEY MONUMENT RECORD

TYPE OF MONUMENT: HARRISON
ADAMS COUNTY COORDINATES, NAD 83 (2007)

N. 271763.786

E. 543953.906

ELEVATION- _____ DATUM _____

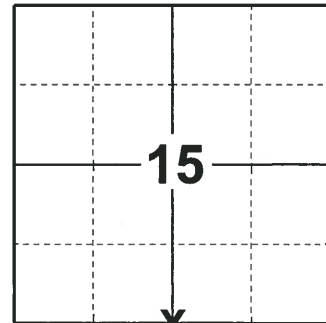
FIELD WORK DATE: 12/04/2018

BASIS FOR MONUMENT LOCATION

1971 - PLS 981 FOUND IRON PIPE AND SET HARRISON MONUMENT. TIED OUT CORNER.

2000 - PLS 2281 RESET HARRISON MONUMENT AFTER COMPLETION OF COUNTY HIGHWAY 'S' RECONSTRUCTION PROJECT. LOCATION IS BASED ON THE EXISTING MONUMENT FOUND BEFORE CONSTRUCTION BEGAN.

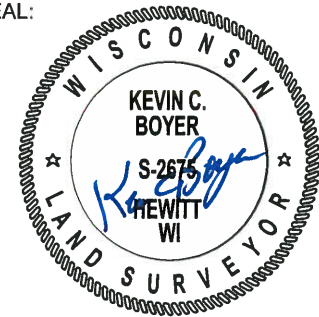
2018 - PLS 2675 FOUND A HARRISON MONUMENT 12" BELOW THE DRIVEWAY SURFACE AND 4 TIES. THE MONUMENT AGREES WITH THE EXISTING 4 TIES. ACCEPTED THE HARRISON MONUMENT AS THE CORNER LOCATION AND RE-MEASURED TO THE EXISTING TIES.



LOCATION

(INDICATE CORNER BY "X")

SEAL:



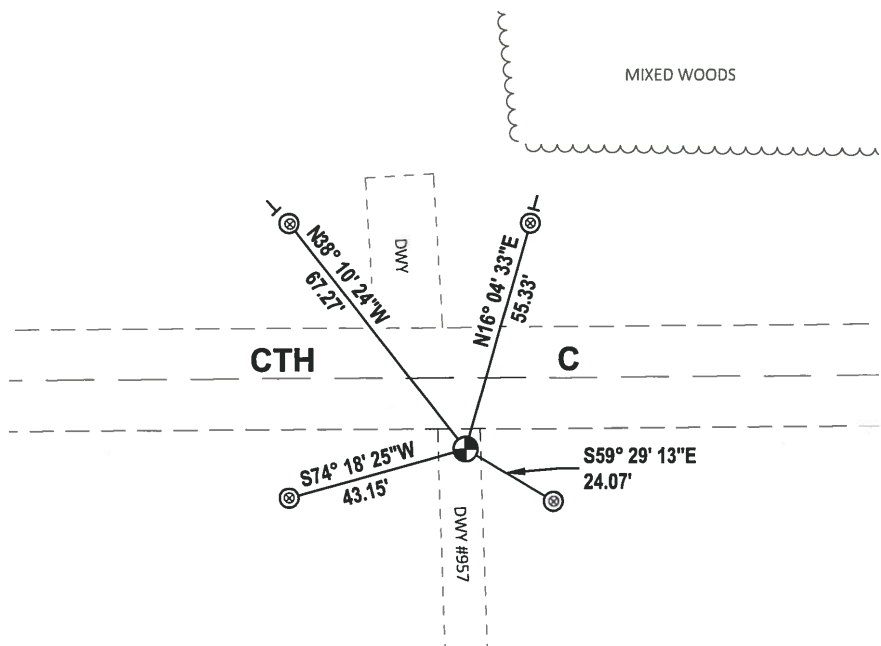
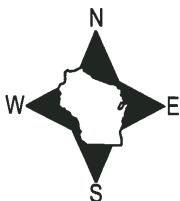
DATA SHOWN HERE ON THIS TIE SHEET IS CORRECT AND COMPLETE TO THE BEST OF MY KNOWLEDGE AND BELIEF.

PROFESSIONAL LAND SURVEYOR

DATE 1-18-19

- TIE SKETCH

NOTE: THE CORNER FALLS 17'± SOUTH OF THE CENTERLINE OF CTH C.



- ⊙ FOUND 1-1/2" O.D. IRON PIPE
- ⊕ FOUND HARRISON MONUMENT
- VINYL "T" POST

ADAMS COUNTY U.S. PUBLIC LAND SURVEY

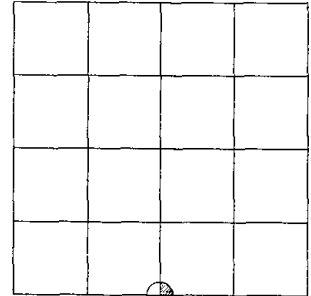
MONUMENT LOCATION RECORD

LANDMARK BENCHMARK: _____
 CORNER IDENTITY: SOUTH QUATER CONER
 STATE PLANE COORDINATE: N: _____ E: _____
 ZONE: _____
 ELEVATION: _____
 DATUM: _____
 THETA ANGLE: _____
 WEATHER: SUNNY/COLD TEMPERATURE: 58° F
 DATE OF SURVEY: 11/4/99
 SURVEY PARTY: MARK HINTZ / CHRIS THORSON

- FOUND
- SET
- RE-SET
- RE-TIED



CORNER # 68
 SECTION 15
 TOWNSHIP 19 NORTH
 RANGE 6 EAST
 SECTION 15



LOCATION

BASIS FOR MONUMENT LOCATION:

(DESCRIBE METHOD OF SURVEY AND CORNER AUTHENTICATION)

HARRISON MONUMENT RESET AFTER COMPLETION OF COUNTY HIGHWAY C RECONSTRUCTION PROJECT. LOCATION IS BASED ON THE EXISTING MONUMENT FOUND BEFORE CONSTRUCTION BEGAN.

SEE ATTACHED TIE SHEET
 SAM MULLEN 1971

SEAL



[Signature]

SCOTT GROHOLSKI (RLS #2281)

1/21/00

DATE

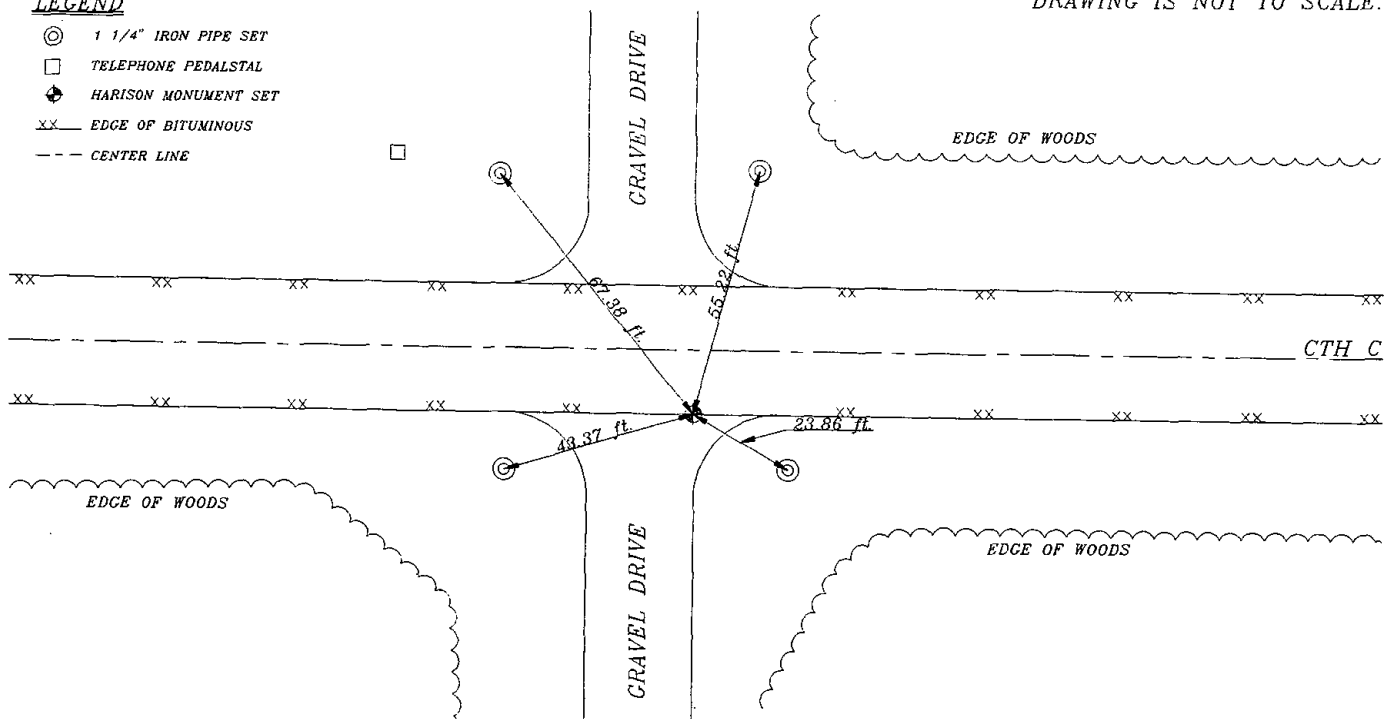
TIE SKETCH:

SHOW MINIMUM OF FOUR (4) HORIZONTAL TIE DISTANCES TO FIXED WITNESS MONUMENTS. DESCRIBE ALL MONUMENTS FOUND OR SET. CORRECT ALL DISTANCES SHOWN TO STANDARD TEMPERATURE OF 68° F.

DRAWING IS NOT TO SCALE.

LEGEND

- ⊙ 1 1/4" IRON PIPE SET
- TELEPHONE PEDALSTAL
- ⊕ HARRISON MONUMENT SET
- xx EDGE OF BITUMINOUS
- - - CENTER LINE



ADAMS COUNTY

CORNER NO. 33

Survey Monument Record

SECTION 22

TYPE OF MONUMENT: 30" HARRISON

TOWN 19

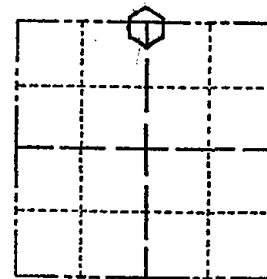
STATE PLANE COORDINATES: N _____ E _____

RANGE 6

ELEVATION - M.S.L. DATUM: _____

THETA ANGLE: _____

FIELD BOOK: 104 PAGE 65



LOCATION (Indicated by 'X')

SEAL:

BASIS FOR MONUMENT LOCATION

(Use reverse side if necessary)

Show info such as: History of corner, with reference to Vol. and pg, dates, surveyor; exact description of monument replaced; if location computed, by taped or EDM traverse; landowner remarks, etc.

Found iron pipe and set monument

August 12, 1971

Sam T. Mullen R.L.S. S-981

OK 11-27-78 R.N.-DA
3-10-83 GR-SS OK

1-TIE GONE, 2-NEW TIES, MON. OK - 10/5/92 - JG

CERTIFIED CORRECT:

OK, 2-13-98 - JG
SEE ATTACHED SHEET, GROHOLSKI, 11/21/00

Registered Land Surveyor

2-GONE, 1-24-03, - JG
OK, 12-17-07, JG-SS

DATE: _____

TIE SKETCH

(Show at least four ties)

