

15 SECTION 19 TOWN 06 RANGE

ADAMS COUNTY

COUNTY CORNER NO: 69
 ROMPORTOL ID: 4190615000

PUBLIC LAND SURVEY MONUMENT RECORD

TYPE OF MONUMENT: HARRISON
 ADAMS COUNTY COORDINATES, NAD 83 (2007)

N. 271771.051

E. 546594.158

ELEVATION- _____ DATUM _____

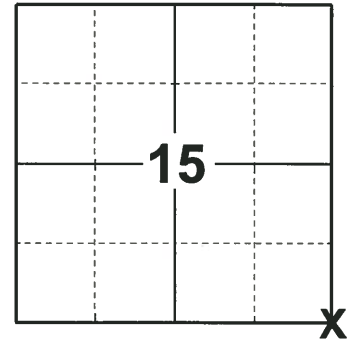
FIELD WORK DATE: 12/04/2018

BASIS FOR MONUMENT LOCATION

1971 - PLS 981 FOUND IRON PIPE AND SET HARRISON MONUMENT. TIED OUT CORNER.

2000 - PLS 2281 RESET HARRISON MONUMENT AFTER COMPLETION OF COUNTY HIGHWAY 'C' RECONSTRUCTION PROJECT. LOCATION IS BASED ON THE EXISTING MONUMENT FOUND BEFORE CONSTRUCTION BEGAN.

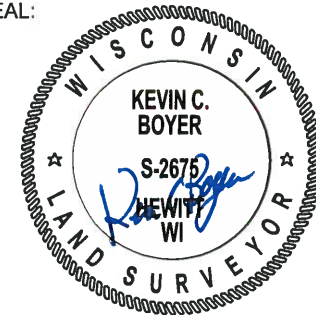
2018 - PLS 2675 FOUND A HARRISON MONUMENT 6" BELOW THE SHOULDER OF THE ROAD, 4 TIES AND 1 PROPERTY IRON. THE MONUMENT AGREES WITH THE EXISTING TIES. ACCEPTED THE HARRISON MONUMENT AS THE CORNER LOCATION. MEASURED TO THE TIES AND PROPERTY IRON.



LOCATION

(INDICATE CORNER BY "X")

SEAL:



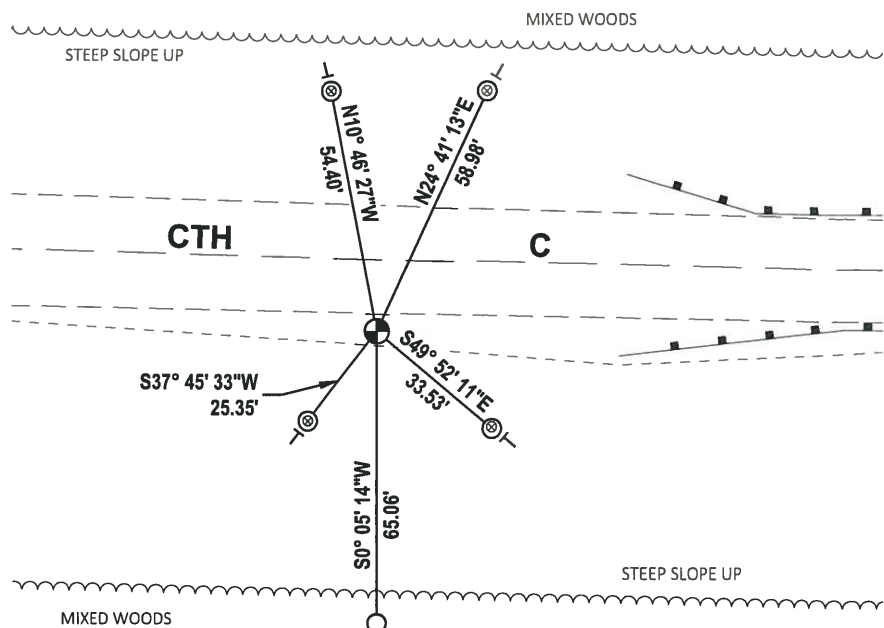
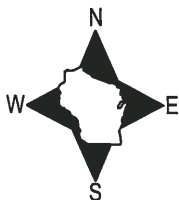
DATA SHOWN HERE ON THIS TIE SHEET IS CORRECT AND COMPLETE TO THE BEST OF MY KNOWLEDGE AND BELIEF.

PROFESSIONAL LAND SURVEYOR

DATE 1-18-19

TIE SKETCH

NOTE: THE CORNER FALLS 16'± SOUTH OF THE CENTERLINE OF CTH C.



- FOUND 3/4" IRON ROD
- ⊙ FOUND 1-1/2" O.D. IRON PIPE
- ⊕ FOUND HARRISON MONUMENT
- | VINYL "T" POST

ADAMS COUNTY

Survey Monument Record

TYPE OF MONUMENT: 30" HARRISON

STATE PLANE COORDINATES: N. _____

E. _____

ELEVATION — M.S.L. DATUM: _____

THETA ANGLE: _____

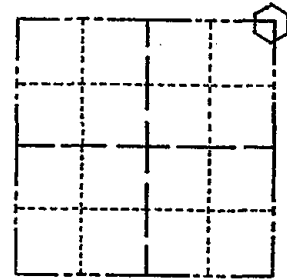
FIELD BOOK: 104 PAGE 66

CORNER NO. 34

SECTION 22

TOWN 19

RANGE 6



LOCATION (Indicated by 'X')

SEAL:

BASIS FOR MONUMENT LOCATION

(Use reverse side if necessary)

Show info such as: History of corner, with reference to Vol. and pg, dates, surveyor; exact description of monument replaced; if location computed, by taped or EDM traverse; landowner remarks, etc.

Found iron pipe and set monument

August 12, 1971

Sam T. Mullen R.L.S. S-981

OK 11-29-75 RN-DA

3-10-83 GR-SS OK

1-TIE GONE, 2-NEW TIES, MON. OK, - 10/5/92-JG

OK, 2-13-98 -JG

SEE ATTACHED SHEET GROHOLSKI 1/21/00

ALL GONE, ONLY TIES LEFT ARE IRON PIPES SET 1-24-03-JG

CERTIFIED CORRECT:

Registered Land Surveyor

DATE: _____

TIE SKETCH DK, 12-17-07 - JG-SS

(Show at least four ties)

