

14
SECTION

19
TOWN

06
RANGE

ADAMS COUNTY

COUNTY CORNER NO: 70

ROMPORTOL ID: 41906140020

PUBLIC LAND SURVEY MONUMENT RECORD

TYPE OF MONUMENT: HARRISON
ADAMS COUNTY COORDINATES, NAD 83 (2007)

N. 271772.492

E. 549192.592

ELEVATION- DATUM

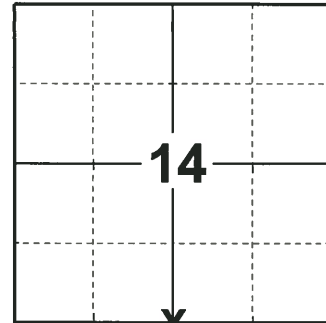
FIELD WORK DATE: 12/04/2018

BASIS FOR MONUMENT LOCATION

1978 - PLS 1118 FOUND NO RECORD OF RESURVEY OF THIS CORNER. LAND OWNER SOUTH OF THE CORNER SAID HE SAW A MONUMENT APPROX. WHERE PLS 1118 SET THE CORNER, THE RECORDED DATA FROM THE ORIGINAL SURVEY DOESN'T CHECK WITH OUR MEASUREMENTS TO THE SW & SE CORNERS OF SECTION 14, HAVE ONLY 12' DIFFERENT FROM THE MONUMENT TO THE ROCHE A CRI CREEK. THE MONUMENT WAS SET ON A STRAIGHT LINE BETWEEN THE SE AND SQ CORNERS AND ON LINE WITH A P.K. NAIL AND AN OLD FENCE TO THE SOUTH.

2000 - PLS 2281 RESET A HARRISON MONUMENT AFTER COMPLETION OF COUNTY HIGHWAY 'C' RECONSTRUCTION PROJECT. LOCATION IS BASED ON THE EXISTING MONUMENT FOUND BEFORE CONSTRUCTION BEGAN.

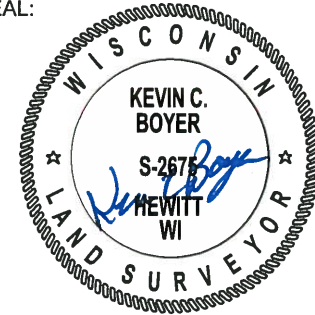
2018 - PLS 2675 FOUND A HARRISON MONUMENT 2" BELOW THE GROUND SURFACE, 4 TIES, 1 PROPERTY IRON AND 1 WITNESS TREE STUMP. THE MONUMENT AGREES WITH THE EXISTING TIES AND WITNESS TREE STUMP. ACCEPTED THE HARRISON MONUMENT AS THE CORNER LOCATION. MEASURED TO THE TIES, PROPERTY IRON AND WITNESS TREE STUMP.



LOCATION

(INDICATE CORNER BY "X")

SEAL:



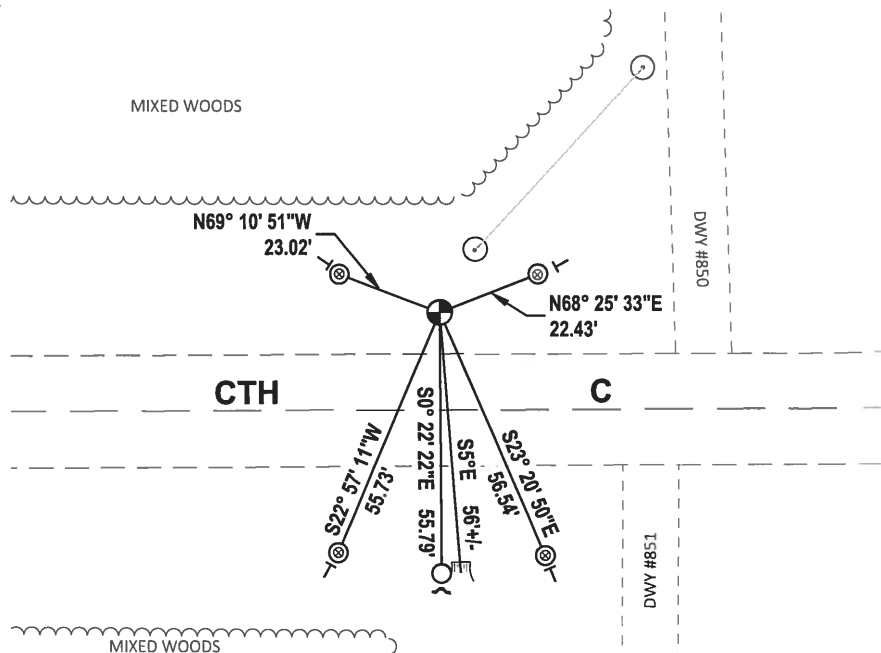
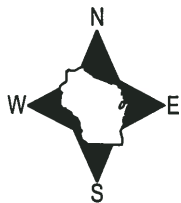
DATA SHOWN HERE ON THIS TIE SHEET IS CORRECT AND COMPLETE TO THE BEST OF MY KNOWLEDGE AND BELIEF.

PROFESSIONAL LAND SURVEYOR

DATE 1-18-19

TIE SKETCH

NOTE: THE CORNER FALLS 21'± NORTH OF THE CENTERLINE OF CTH C.



- FOUND 3/4" IRON ROD
- ⊗ FOUND 1-1/2" O.D. IRON PIPE
- ⊕ FOUND HARRISON MONUMENT
- ┘ STEEL FENCE POST
- └ VINYL "T" POST
- ⌘ WITNESS STUMP

ADAMS COUNTY U.S. PUBLIC LAND SURVEY

MONUMENT LOCATION RECORD

LANDMARK BENCHMARK: _____

CORNER IDENTITY: _____ SOUTH QUATER CONER

STATE PLANE COORDINATE: N: _____

E: _____

ZONE: _____

ELEVATION: _____

DATUM: _____

THETA ANGLE: _____

WEATHER: SUNNY/COLD TEMPERATURE: 58° F

DATE OF SURVEY: 11/4/99

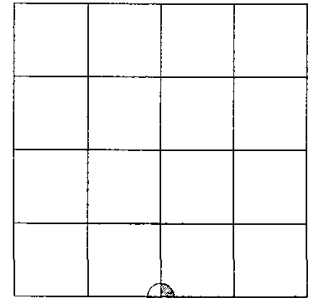
SURVEY PARTY: MARK HINTZ / CHRIS THORSON

- FOUND
- SET
- RE-SET
- RE-TIED



CORNER # 70
 SECTION 14
 TOWNSHIP 19 NORTH
 RANGE 6 EAST

SECTION 14



LOCATION

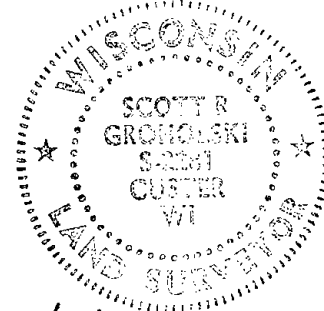
BASIS FOR MONUMENT LOCATION:

(DESCRIBE METHOD OF SURVEY AND CORNER AUTHENTICATION)

HARRISON MONUMENT RESET AFTER COMPLETION OF COUNTY HIGHWAY C RECONSTRUCTION PROJECT. LOCATION IS BASED ON THE EXISTING MONUMENT FOUND BEFORE CONSTRUCTION BEGAN.

SEE ATTACHED TIE SHEET - GARY SCHINDLER 1978

SEAL



SCOTT GROHOLSKI (RLS #2281)

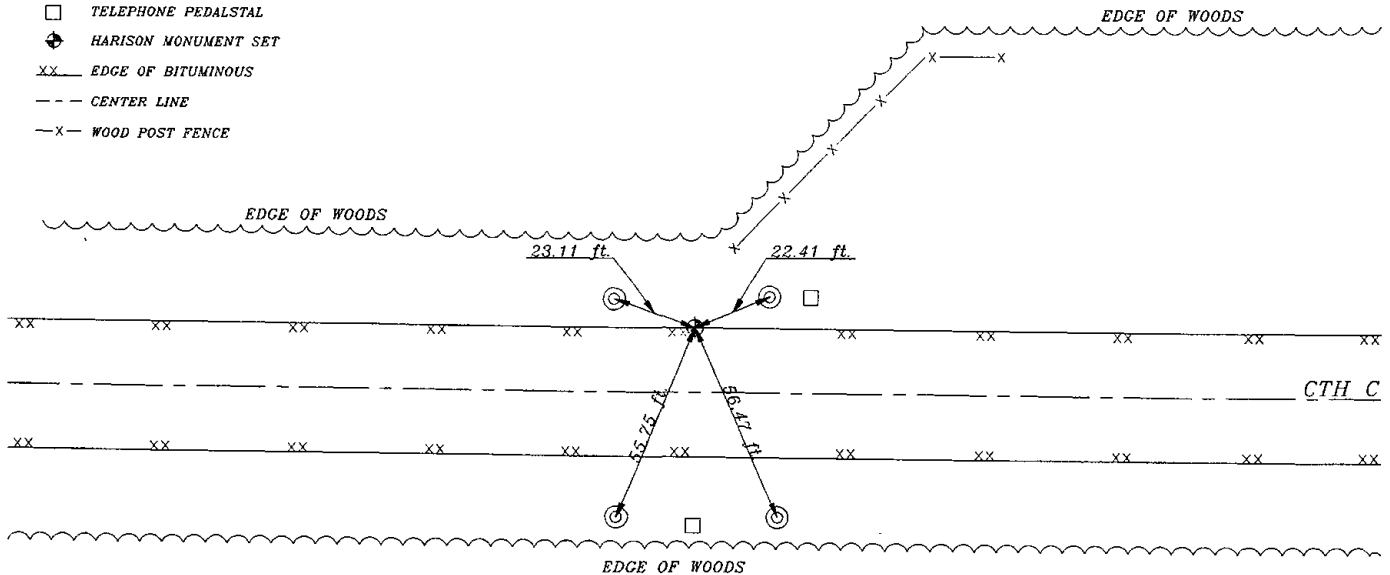
DATE 1/26/00

TIE SKETCH:

SHOW MINIMUM OF FOUR (4) HORIZONTAL TIE DISTANCES TO FIXED WITNESS MONUMENTS. DESCRIBE ALL MONUMENTS FOUND OR SET. CORRECT ALL DISTANCES SHOWN TO STANDARD TEMPERATURE OF 68° F. DRAWING IS NOT TO SCALE.

LEGEND

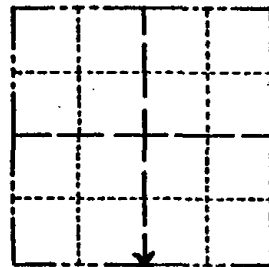
- ⊙ 1 1/4" IRON PIPE SET
- TELEPHONE PEDALSTAL
- ⊕ HARRISON MONUMENT SET
- xx EDGE OF BITUMINOUS
- CENTER LINE
- x- WOOD POST FENCE



Government Land Corner Certificate

Adams County
 TYPE OF MONUMENT: H.M.
 STATE PLANE COORDINATES: N _____
 E _____
 ELEVATION — M.S.L. DATUM: _____
 THETA ANGLE: _____
 FIELD BOOK: _____ PAGE _____
 DRAWN BY: G.E.S.

CORNER NO. 70
 SECTION 14
 TOWN 19
 RANGE 6



LOCATION
(Indicated by 'X')

SEAL:



DATA SHOWN HERE ON
CERTIFIED CORRECT:

Gary E. Schindler
Registered Land Surveyor

DATE: Nov 3, 1978

WE FOUND NO RECORD OF RESURVEY OF
 THIS CORNER, LAND OWNER SOUTH OF THE
 CORNER SAID HE SAW A MONUMENT APPROX. WHERE
 WE SET THE CORNER, THE RECORDED DATA FROM
 THE ORIGINAL SURVEY DOESN'T CHECK WITH OUR
 MEASUREMENTS TO THE SW & SE CORNERS OF
 SECTION 14, BUT WE HAVE ONLY 12' DIFFERENT
 FROM THE MONUMENT TO THE ROCHE A CRI
 CREEK; THE MONUMENT WAS SET ON A STRAIGHT
 LINE BETWEEN THE SE AND SW CORNERS AND
 ON LINE WITH A P.I.C. NAIL AND AN OLD FENCE
 TO SOUTH.

Area excavated by A. Klabrowsk with
 Backhoe - Found nothing. - ABK

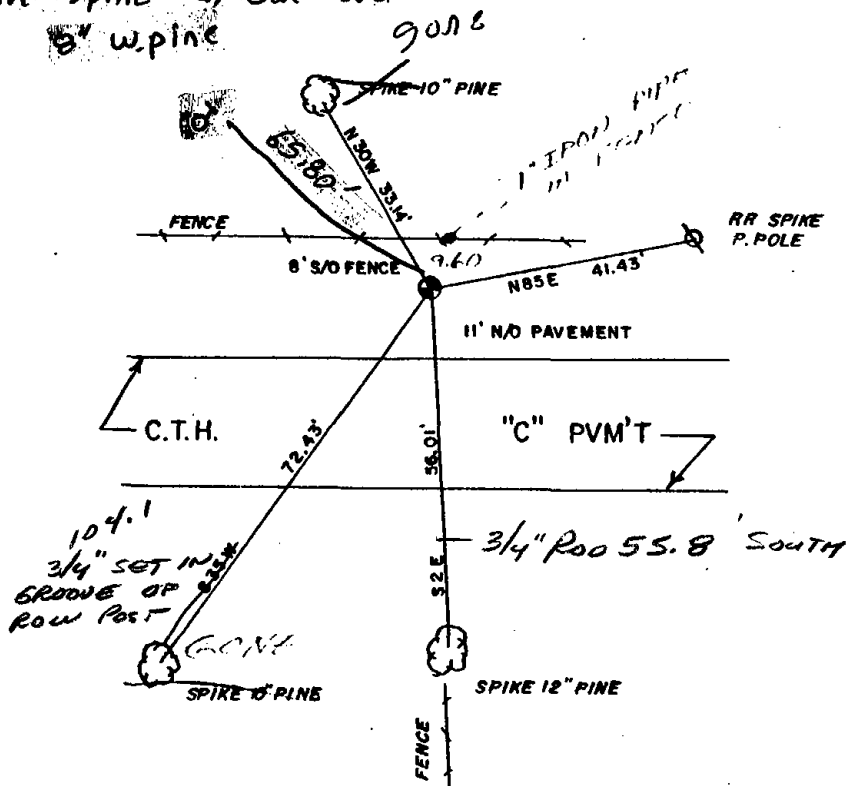
TIE SKETCH

Show at least four ties, also fence lines, roads, topo, size and type of witness trees and if off road - best way to arrive at corner.

SCALE 1"=30'



Barn spike w/ can cover
8" w. pine



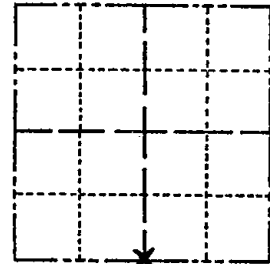
MAINTENANCE RECORD

Date	Init.	Remarks
3-10-83	GR-SS	OK
6-24-91	MEHC	OK 1 new

Government Land Corner Certificate

Adams County
 TYPE OF MONUMENT: H.M.
 STATE PLANE COORDINATES: N _____
 E _____
 ELEVATION — M.S.L. DATUM: _____
 THETA ANGLE: _____
 FIELD BOOK: _____ PAGE _____
 DRAWN BY: G.E.S.

CORNER NO. 70
 SECTION 14
 TOWN 19
 RANGE 6



LOCATION
(Indicated by 'X')

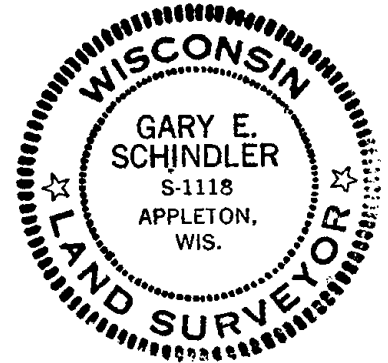
BASIS FOR MONUMENT LOCATION

Show info such as: History of corner, with reference to Vol. and pg., dates, surveyor; exact description of monument replaced; if location computed, by taped or EDM traverse; landowner remarks, etc. (Use reverse side if necessary)

WE FOUND NO RECORD OF RESURVEY OF THIS CORNER. LAND OWNER SOUTH OF THE CORNER SAID HE SAW A MONUMENT APPROX. WHERE WE SET THE CORNER. THE RECORDED DATA FROM THE ORIGINAL SURVEY DOESN'T CHECK WITH OUR MEASUREMENTS TO THE SW & SE CORNERS OF SECTION 14, BUT WE HAVE ONLY 12' DIFFERENT FROM THE MONUMENT TO THE ROCHE A CRI CREEK. THE MONUMENT WAS SET ON A STRAIGHT LINE BETWEEN THE SE AND SW CORNERS AND ON LINE WITH A P.I.K. NAIL AND AN OLD FENCE TO SOUTH.

Area excavated by A. Kledrowski with back hoe - Found nothing - ABK

SEAL:



DATA SHOWN HERE ON CERTIFIED CORRECT:

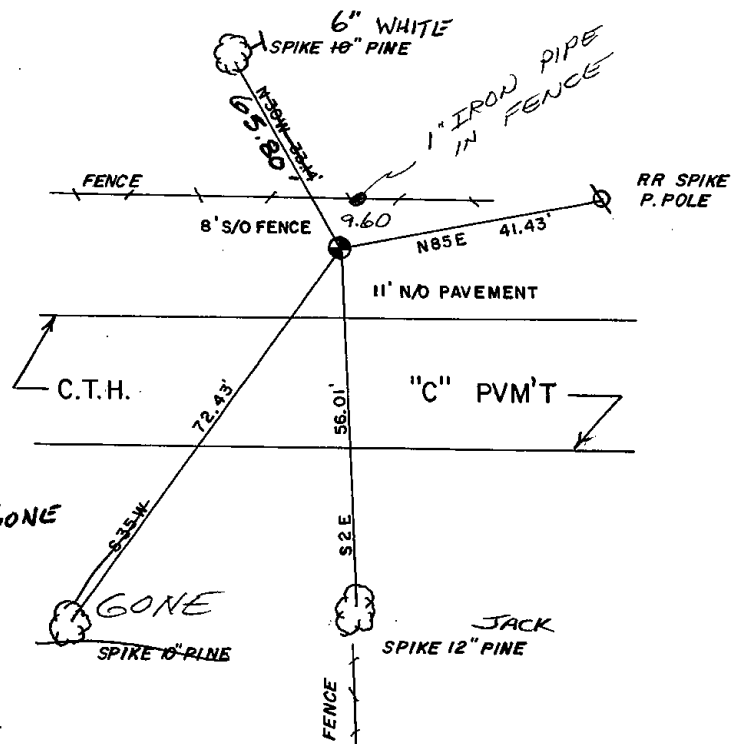
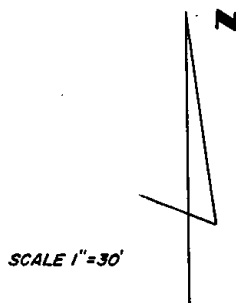
Gary E. Schindler
 Registered Land Surveyor

DATE: Nov 3, 1978

TIE SKETCH

SEE TIE SHEET DTD 6/24/91

Show at least four ties, also fence lines, roads, topo, size and type of witness trees' and if off road - best way to arrive at corner.



MAINTENANCE RECORD

Date	Init.	Remarks
3-10-83	GR-SS	OK
10/5/92	JG	MON. OK 1-NEW TIE, 1-TIE GONE
1-13-98	JG	OK
SEE ATTACHED SHEET, GORHOLSKI, 1/21/00		
1-24-03	JG	OK