

20 SECTION 19 TOWN 06 RANGE

ADAMS COUNTY

COUNTY CORNER NO: 76

ROMPORTOL ID: 41906202000

PUBLIC LAND SURVEY MONUMENT RECORD

TYPE OF MONUMENT: HARRISON
 ADAMS COUNTY COORDINATES, NAD 83 (2007)

N. 269120.317

E. 536047.901

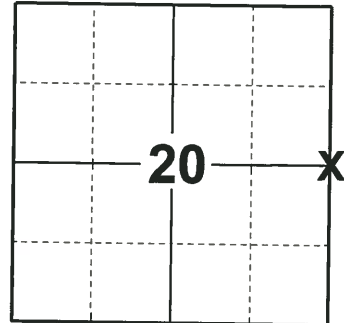
ELEVATION- DATUM

FIELD WORK DATE: 12/11/2018

BASIS FOR MONUMENT LOCATION

1971 - PLS 981 SET A HARRISON MONUMENT AND TIED OUT.

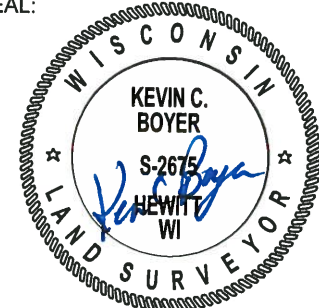
2018 - PLS 2675 FOUND HARRISON MONUMENT 12" BELOW THE ROAD SURFACE, 2 TIES, 1 PROPERTY IRON AND 1 WITNESS. THE MONUMENT AGREES WITH THE EXISTING TIES AND WITNESS. ACCEPTED THE HARRISON MONUMENT AS THE CORNER LOCATION. SET 2 NEW TIES AND MEASURED TO THE TIES, PROPERTY IRON AND WITNESS.



LOCATION

(INDICATE CORNER BY "X")

SEAL:



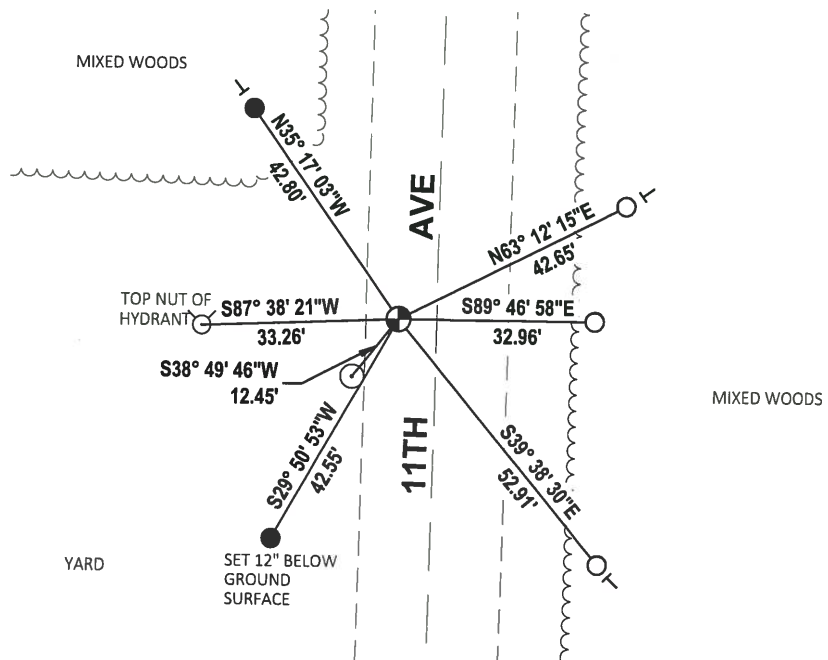
DATA SHOWN HERE ON THIS TIE SHEET IS CORRECT AND COMPLETE TO THE BEST OF MY KNOWLEDGE AND BELIEF.

PROFESSIONAL LAND SURVEYOR

DATE 1-18-19

TIE SKETCH

NOTE: THE CORNER FALLS 7'± WEST OF THE CENTERLINE OF 11TH AVE.



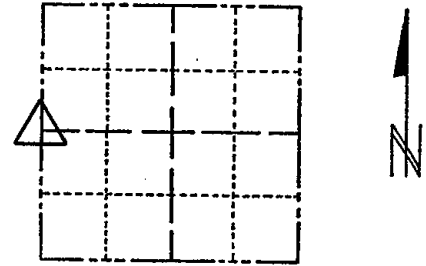
- SET 3/4" x 18" IRON REBAR, 1.50#/FT
- FOUND 3/4" IRON ROD
- ⊕ FOUND HARRISON MONUMENT
- ┌ VINYL "T" POST

ADAMS COUNTY

CORNER NO. 73
 SECTION 21
 TOWN 19
 RANGE 6

Survey Monument Record

TYPE OF MONUMENT: 30" HARRISON
 STATE PLANE COORDINATES: N _____
 E _____
 ELEVATION — M.S.L. DATUM: _____
 THETA ANGLE: _____
 FIELD BOOK: 104 PAGE 102



LOCATION
(Indicated by 'X')

SEAL:

BASIS FOR MONUMENT LOCATION

(Use reverse side if necessary)

Show info such as: History of corner, with reference to Vol. and pg, dates, surveyor; exact description of monument replaced; if location computed, by taped or EDM traverse; landowner remarks, etc.

Set monument

November 24, 1971

Sam T. Mullen R.L.S. S-981

OK 11-27-78 RN-DA
 3-11-83 GR-SS OK
 OK - 10/5/92-JG
 OK 2-11-98-JG
 OK, 1-6-03-JG
 2 NEW TIES 8-13-08 KS-SS

CERTIFIED CORRECT:

Registered Land Surveyor

DATE: _____

TIE SKETCH

(Show at least four ties)

