

21
SECTION

19
TOWN

06
RANGE

ADAMS COUNTY

COUNTY CORNER NO: 77

ROMPORTOL ID: 41906212000

PUBLIC LAND SURVEY MONUMENT RECORD

TYPE OF MONUMENT: HARRISON
ADAMS COUNTY COORDINATES, NAD 83 (2007)

N. 269116.213

E. 541293.670

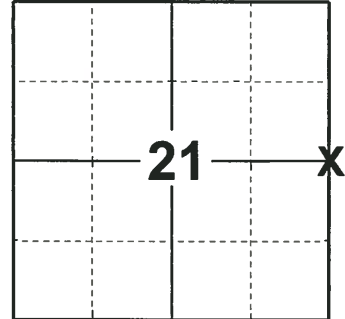
ELEVATION- _____ DATUM _____

FIELD WORK DATE: 12/10/2018

BASIS FOR MONUMENT LOCATION

1971 - PLS 981 FOUND IRON PIPE AND RE SET HARRISON MONUMENT IN PLACE OF THE IRON PIPE. TIED OUT CORNER.

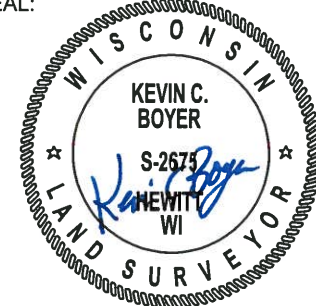
2018 - PLS 2675 FOUND A HARRISON MONUMENT 6" BELOW THE ROAD SURFACE AND 1 TIE. THE MONUMENT AGREES WITH THE EXISTING TIE. ACCEPTED THE HARRISON MONUMENT AS THE CORNER LOCATION. SET 4 NEW TIES AND MEASURED TO THE TIES.



LOCATION

(INDICATE CORNER BY "X")

SEAL:



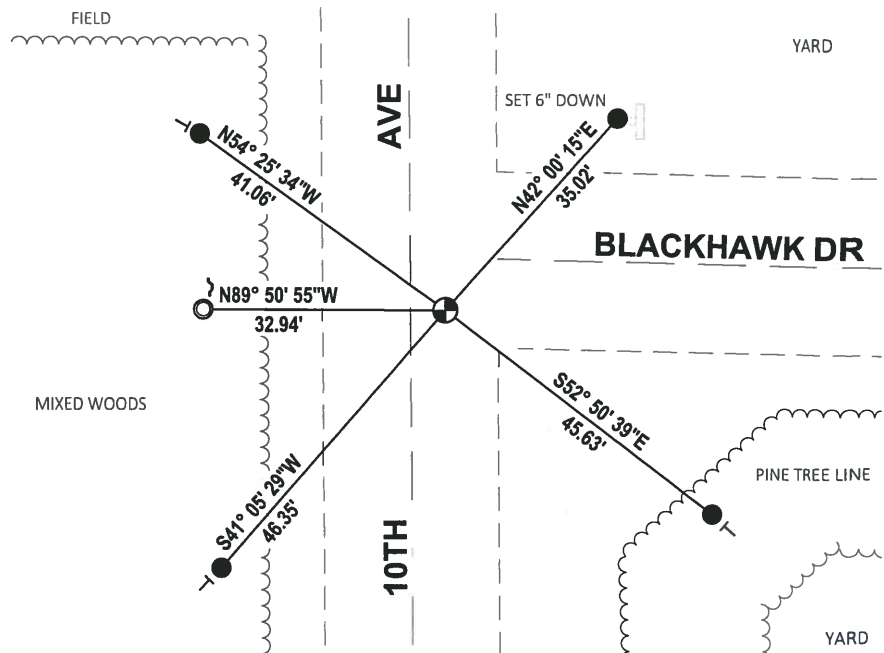
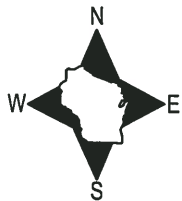
DATA SHOWN HERE ON THIS TIE SHEET IS CORRECT AND COMPLETE TO THE BEST OF MY KNOWLEDGE AND BELIEF.

PROFESSIONAL LAND SURVEYOR

DATE 1-18-19

TIE SKETCH

NOTE: THE CORNER FALLS 5± EAST OF THE CENTERLINE OF 10TH AVE.



- SET 3/4" x 18" IRON REBAR, 1.50#/FT
- FOUND 1-1/4" O.D. IRON PIPE
- ⊙ FOUND HARRISON MONUMENT
- ↗ STEEL FENCE POST
- ┌ VINYL "T" POST

ADAMS COUNTY

Survey Monument Record

CORNER NO. 37
SECTION 22
TOWN 19
RANGE 6

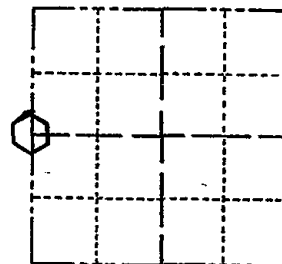
TYPE OF MONUMENT: 30" HARRISON

STATE PLANE COORDINATES: N _____
E _____

ELEVATION -- M.S.L. DATUM: _____

THETA ANGLE: _____

FIELD BOOK: 104 PAGE 69



LOCATION (Indicated by 'X')

SEAL:

BASIS FOR MONUMENT LOCATION

(Use reverse side if necessary)

Show info such as: History of corner, with reference to Vol. and pg, dates, surveyor; exact description of monument replaced; if location computed, by taped or EDM traverse; landowner remarks, etc.

Found iron pipe and set monument

August 13, 1971

Sam T. Mullen R.L.S. S-981

OK 11-27-78 RA-DA
3-10-83 GR-SS 2 NEW TIES
OK-10/5/92-JG
1-GONE, 1-NEW, 2-13-98-JG
1-GONE, 1-NEW, 1-6-03-JG
OK, 12-17-07-JG-SS

CERTIFIED CORRECT:

Registered Land Surveyor

DATE: _____

TIE SKETCH

(Show at least four ties)

