

21 SECTION 19 TOWN 06 RANGE

ADAMS COUNTY

COUNTY CORNER NO: 86
ROMPORTOL ID: 41906210020

PUBLIC LAND SURVEY MONUMENT RECORD

TYPE OF MONUMENT: HARRISON (BROKEN-TOP)
ADAMS COUNTY COORDINATES, NAD 83 (2007)

N. 266474.926
E. 538654.008

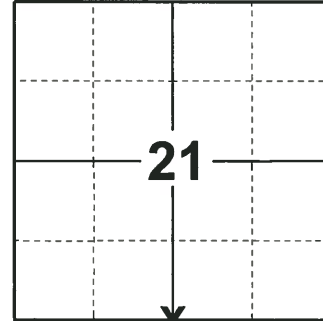
ELEVATION- DATUM

FIELD WORK DATE: 12/11/2018

BASIS FOR MONUMENT LOCATION

1971 - PLS 981 FOUND A 'PK' NAIL AND RESET HARRISON MONUMENT IN PLACE OF THE 'PK'. TIED OUT CORNER.

2018 - PLS 2675 FOUND A HARRISON MONUMENT WITH A BROKEN-TOP 18" BELOW THE ROAD SURFACE, 1 TIE AND 1 WITNESS. THE MONUMENT AGREES WITH THE EXISTING TIE AND WITNESS. ACCEPTED THE HARRISON MONUMENT WITH A BROKEN-TOP AS THE CORNER LOCATION. SET 3 NEW TIES AND MEASURED TO THE TIES AND WITNESS.



LOCATION

(INDICATE CORNER BY "X")

SEAL:



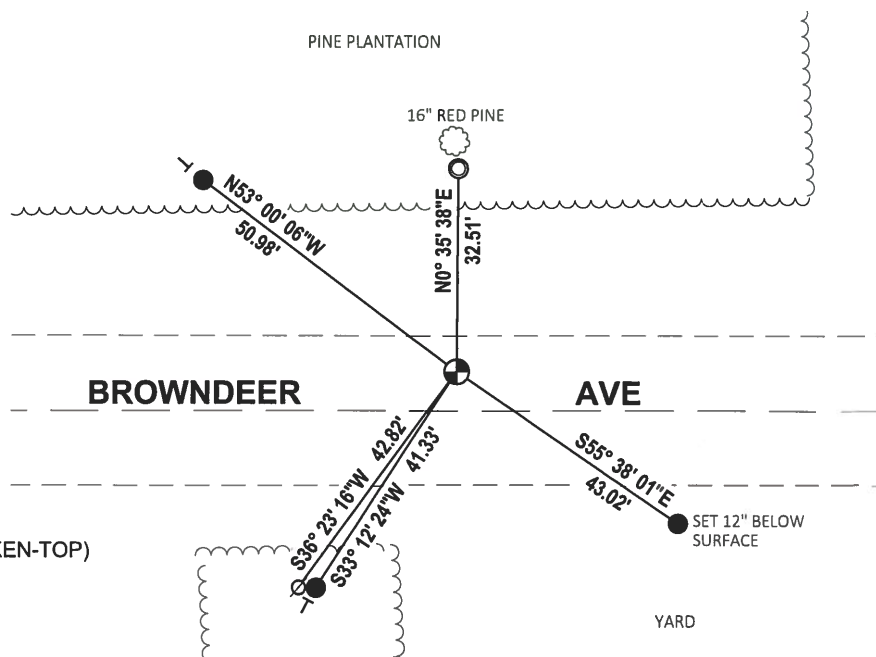
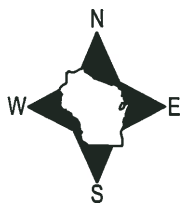
DATA SHOWN HERE ON THIS TIE SHEET IS CORRECT AND COMPLETE TO THE BEST OF MY KNOWLEDGE AND BELIEF.

PROFESSIONAL LAND SURVEYOR

DATE 1-18-19

TIE SKETCH

NOTE: THE CORNER FALLS 7± NORTH OF THE CENTERLINE OF BROWNDDEER AVE.



- SET 3/4" x 18" IRON REBAR, 1.50#/FT
- FOUND 1-1/4" O.D. IRON PIPE
- ⊙ FOUND HARRISON MONUMENT (BROKEN-TOP)
- ∅ WITNESS POWER POLE
- | VINYL "T" POST

ADAMS COUNTY

Survey Monument Record

TYPE OF MONUMENT: HARRISON

STATE PLANE COORDINATES: N _____

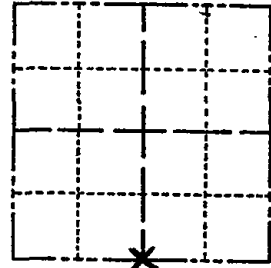
E _____

ELEVATION — M.S.L. DATUM: _____

THETA ANGLE: _____

FIELD BOOK: 38 PAGE 13

CORNER NO. 56⁽⁸⁶⁾
SECTION 21
TOWN 19
RANGE 6



LOCATION
(Indicated by 'X')

SEAL:

BASIS FOR MONUMENT LOCATION

(Use reverse side if necessary)

Show info such as: History of corner, with reference to Vol. and pg, dates, surveyor; exact description of monument replaced; if location computed, by taped or EDM traverse; landowner remarks, etc.

ADD To Tie Sheet

56

3-10-83 GR-SS OK
OK - 10/5/92 - JG
OK 2-13-98 - JG
OK, 1-6-03 - JG

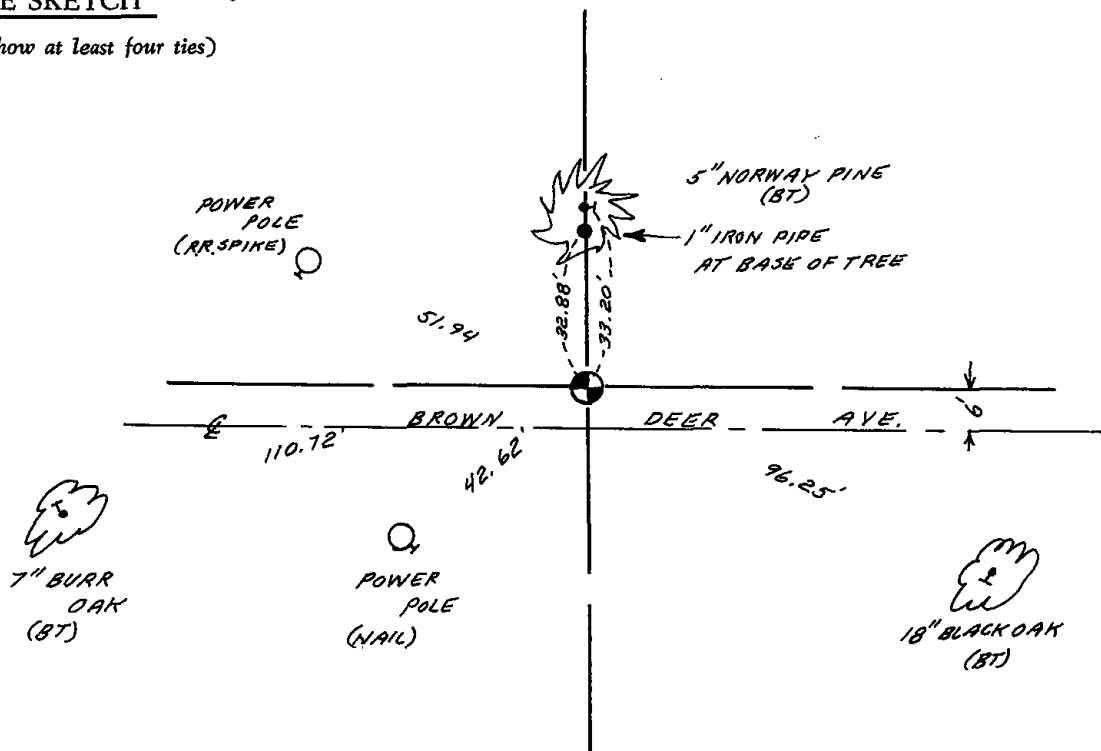
CERTIFIED CORRECT:

Registered Land Surveyor

DATE: _____

TIE SKETCH OK, 12-17-07, - JG-SS

(Show at least four ties)



ADAMS COUNTY

Survey Monument Record

TYPE OF MONUMENT: 30" HARRISON

STATE PLANE COORDINATES: N _____
E _____

ELEVATION — M.S.L. DATUM: _____

THETA ANGLE: _____

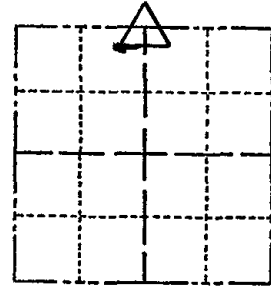
FIELD BOOK: 104 PAGE 87

CORNER NO. 56

SECTION 28

TOWN 19

RANGE 6



LOCATION
(Indicated by 'X')

SEAL:

BASIS FOR MONUMENT LOCATION

(Use reverse side if necessary)

Show info such as: History of corner, with reference to Vol. and pg, dates, surveyor; exact description of monument replaced; if location computed, by taped or EDM traverse; landowner remarks, etc.

Found "PK" nail and set monument

November 4, 1971

Sam T. Mullen R.L.S. S-981

CERTIFIED CORRECT:

Registered Land Surveyor

DATE: _____

TIE SKETCH

(Show at least four ties)

