

21
SECTION

19
TOWN

06
RANGE

ADAMS COUNTY

COUNTY CORNER NO: 87

ROMPORTOL ID: 41906210000

PUBLIC LAND SURVEY MONUMENT RECORD

TYPE OF MONUMENT: HARRISON
ADAMS COUNTY COORDINATES, NAD 83 (2007)

N. 266476.848

E. 541273.350

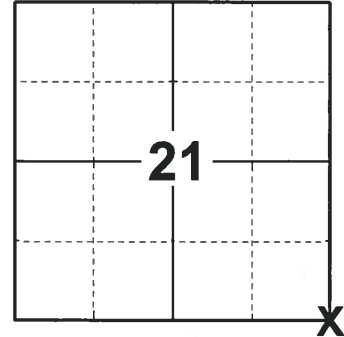
ELEVATION- DATUM

FIELD WORK DATE: 12/10/2018

BASIS FOR MONUMENT LOCATION

1971 - PLS 981 FOUND A IRON PIPE, STONE AT 1.5' AND SET TOP 11" OF HARRISON MONUMENT.

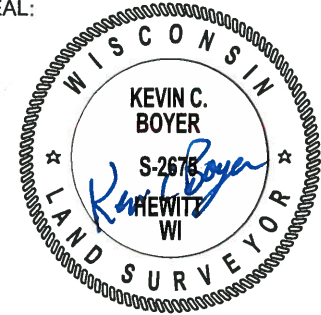
2018 - PLS 2675 FOUND A HARRISON MONUMENT 6" BELOW THE ROAD SURFACE, 1 TIE AND 1 PROPERTY IRON. THE MONUMENT AGREES WITH THE EXISTING TIE. ACCEPTED THE HARRISON MONUMENT AS THE CORNER LOCATION. SET 2 NEW TIES AND MEASURED TO THE TIES AND PROPERTY IRON.



LOCATION

(INDICATE CORNER BY "X")

SEAL:



DATA SHOWN HERE ON THIS TIE SHEET IS CORRECT AND COMPLETE TO THE BEST OF MY KNOWLEDGE AND BELIEF.

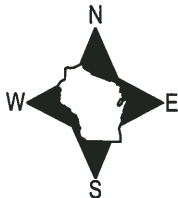
PROFESSIONAL LAND SURVEYOR

DATE 1-18-19

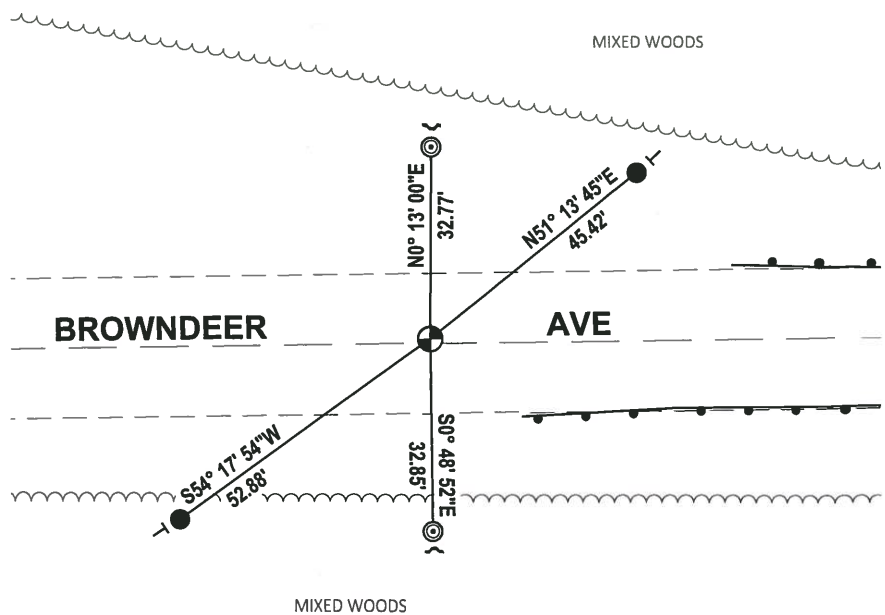
TIE SKETCH

NOTES: THE CORNER FALLS 1'± NORTH OF THE CENTERLINE OF BROWNDDEER AVE.

THE CORNER FALLS 180'± EAST OF BROWNDDEER AVE & 10TH AVE INTERSECTION.



- SET 3/4" x 18" IRON REBAR, 1.50#/FT
- ⊙ FOUND 2-3/8" O.D. IRON PIPE
- ⊕ FOUND HARRISON MONUMENT
- ↘ STEEL FENCE POST
- | VINYL "T" POST



ADAMS COUNTY

CORNER NO. 36

Survey Monument Record

SECTION 22

TYPE OF MONUMENT: 30" HARRISON

TOWN 19

STATE PLANE COORDINATES: N

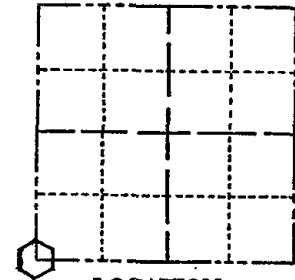
RANGE 6

E

ELEVATION - M.S.L. DATUM:

THETA ANGLE:

FIELD BOOK: 104 PAGE 68



LOCATION (Indicated by 'X')

SEAL:

BASIS FOR MONUMENT LOCATION

(Use reverse side if necessary)

Show info such as: History of corner, with reference to Vol. and pg, dates, surveyor; exact description of monument replaced; if location computed, by taped or EDM traverse; landowner remarks, etc.

Found iron pipe, stone at 1.5 Ft. and set top 11" of Harrison monument

August 12, 1971

Sam T. Mullen R.L.S. S-981

- OK 11-27-78 RN-DA
- OK - 10/5/92 - JG
- OK 2-13-98 - JG
- OK, 1-6-03 - JG
- OK, 12-17-07 - JG-SS

CERTIFIED CORRECT:

Registered Land Surveyor

DATE:

TIE SKETCH

(Show at least four ties)

