

22
SECTION

19
TOWN

06
RANGE

ADAMS COUNTY

COUNTY CORNER NO: 88

ROMPORTOL ID: 41906220020

PUBLIC LAND SURVEY MONUMENT RECORD

TYPE OF MONUMENT: HARRISON
ADAMS COUNTY COORDINATES, NAD 83 (2007)

N. 266483.381

E. 543930.760

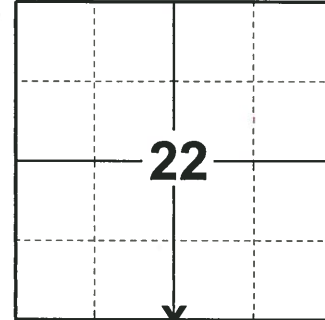
ELEVATION- - - - DATUM - - - -

FIELD WORK DATE: 12/10/2018

BASIS FOR MONUMENT LOCATION

1971 - PLS 981 FOUND SOLID IRON AND RESET HARRISON MONUMENT IN PLACE OF THE SOLID IRON. TIED OUT CORNER.

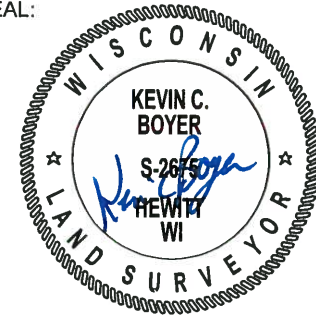
2018 - PLS 2675 FOUND A HARRISON MONUMENT 6" BELOW THE ROAD SURFACE AND 1 TIE. THE MONUMENT AGREES WITH THE EXISTING TIE. ACCEPTED THE HARRISON MONUMENT AS THE CORNER LOCATION. SET 3 NEW TIES AND MEASURED TO THE TIES.



LOCATION

(INDICATE CORNER BY "X")

SEAL:



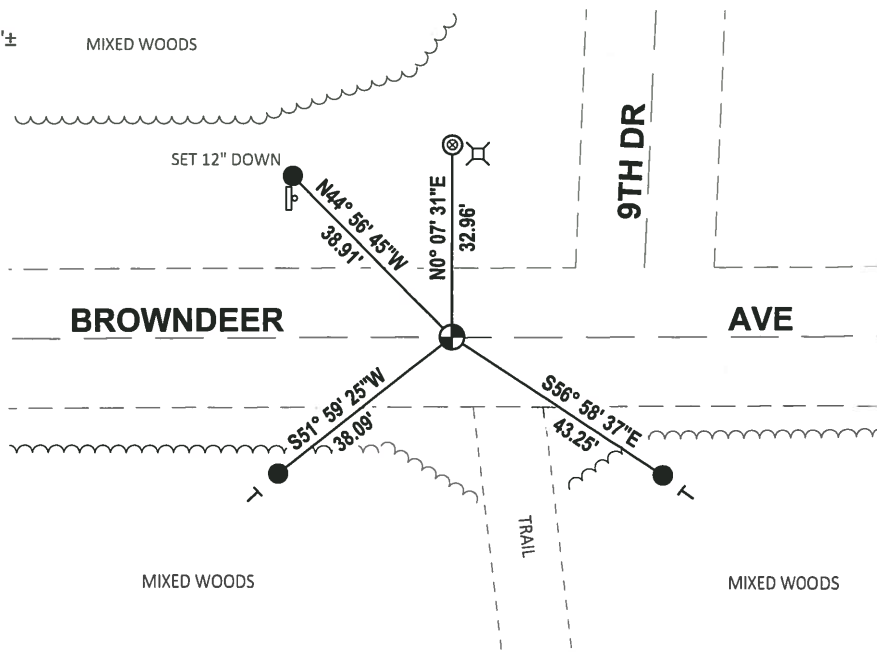
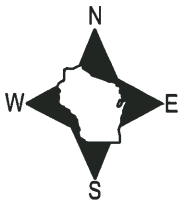
DATA SHOWN HERE ON THIS TIE SHEET IS CORRECT AND COMPLETE TO THE BEST OF MY KNOWLEDGE AND BELIEF.

PROFESSIONAL LAND SURVEYOR

DATE 1-18-19

TIE SKETCH

NOTE: THE CORNER FALLS ON THE CENTERLINE OF BROWNDEER AVE AND 33'± WEST OF THE CENTERLINE OF 9TH DR.



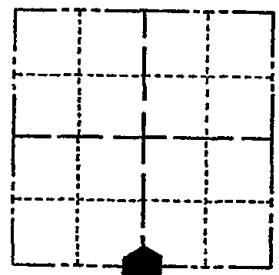
- SET 3/4" x 18" IRON REBAR, 1.50#/FT
- ⊗ FOUND 1-1/2" O.D. IRON PIPE
- ⊕ FOUND HARRISON MONUMENT
- | VINYL "T" POST

ADAMS COUNTY

Survey Monument Record

TYPE OF MONUMENT: 30" HARRISON
 STATE PLANE COORDINATES: N. _____
 E. _____
 ELEVATION — M.S.L. DATUM: _____
 THETA ANGLE: _____
 FIELD BOOK: 104 PAGE 70

CORNER NO. 38
 SECTION 22
 TOWN 19
 RANGE 6



LOCATION
(Indicated by 'X')

SEAL:

BASIS FOR MONUMENT LOCATION

(Use reverse side if necessary)

Show info such as: History of corner, with reference to Vol. and pg, dates, surveyor; exact description of monument replaced; if location computed, by taped or EDM traverse; landowner remarks, etc.

Found solid iron and set monument

August 13, 1971

Sam T. Mullen R.L.S. S-981

RETIED 11-29-78 RN-DA
 3-10-83 GR-SS OK
 OK - 10/5/92-JG
 OK, 2-13-98-JG
 OK, 1-24-03-JG
 OK, 12-17-01-JG-SS

CERTIFIED CORRECT:

Registered Land Surveyor

DATE: _____

TIE SKETCH

All TIES NEW

(Show at least four ties)

