

22 SECTION
19 TOWN
06 RANGE

ADAMS COUNTY

COUNTY CORNER NO: 89
ROMPORTOL ID: 41906220000

PUBLIC LAND SURVEY MONUMENT RECORD

TYPE OF MONUMENT: HARRISON (BROKEN-TOP)
ADAMS COUNTY COORDINATES, NAD 83 (2007)

N. 266489.911

E. 546589.532

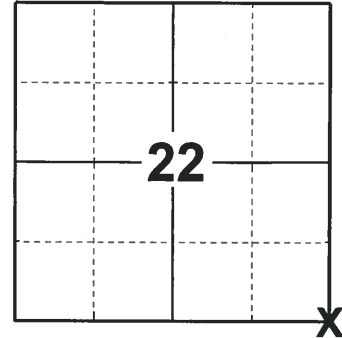
ELEVATION- DATUM

FIELD WORK DATE: 12/10/2018

BASIS FOR MONUMENT LOCATION

1971 - PLS 981 FOUND A IRON PIPE AND RESET THE CORNER WITH A HARRISON MONUMENT IN PLACE OF IRON PIPE. TIED OUT CORNER.

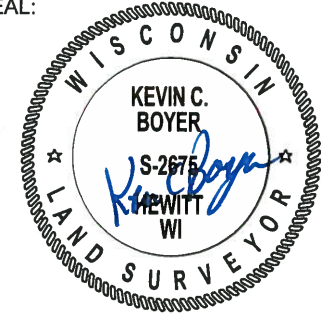
2018 - PLS 2675 FOUND A HARRISON MONUMENT WITH A BROKEN-TOP 10" BELOW THE GROUND SURFACE, 3 TIES AND 1 WITNESS. THE MONUMENT AGREES WITH 2 OF THE 3 TIES "NORTH WEST 1±" AND THE WITNESS. ACCEPTED THE HARRISON MONUMENT WITH A BROKEN-TOP AS THE CORNER LOCATION. SET 1 NEW TIE AND MEASURED TO THE TIES AND WITNESS.



LOCATION

(INDICATE CORNER BY "X")

SEAL:



DATA SHOWN HERE ON THIS TIE SHEET IS CORRECT AND COMPLETE TO THE BEST OF MY KNOWLEDGE AND BELIEF.

PROFESSIONAL LAND SURVEYOR

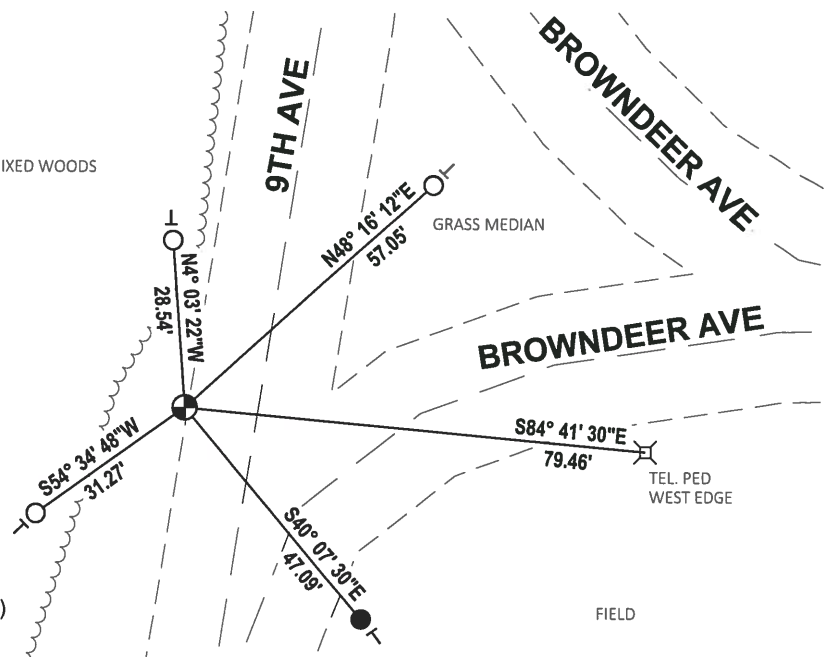
DATE 1-18-19

- TIE SKETCH

NOTE: THE CORNER FALLS 13'± WEST OF THE CENTERLINE OF 9TH AVE.



MIXED WOODS



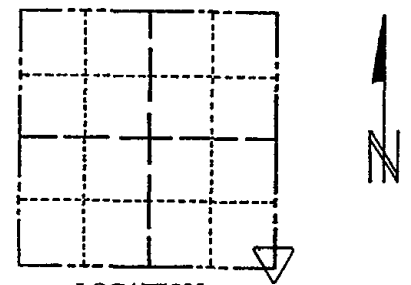
- SET 3/4" x 18" IRON REBAR, 1.50#/FT
- FOUND 3/4" IRON ROD
- ⊕ FOUND HARRISON MONUMENT (BROKEN-TOP)
- ⊖ VINYL "T" POST

ADAMS COUNTY

Survey Monument Record

TYPE OF MONUMENT: 30" HARRISON
STATE PLANE COORDINATES: N
E
ELEVATION - M.S.L. DATUM:
THETA ANGLE:
FIELD BOOK: 104 PAGE 71

CORNER NO. 39
SECTION 22
TOWN 19
RANGE 6



LOCATION (Indicated by 'X')

SEAL:

BASIS FOR MONUMENT LOCATION

(Use reverse side if necessary)

Show info such as: History of corner, with reference to Vol. and pg, dates, surveyor; exact description of monument replaced; if location computed, by taped or EDM traverse; landowner remarks, etc.

Found iron pipe and set monument
August 13, 1971
Sam T. Millen R.L.S. S-981

SEE TIE SHEET
NOV. 2008 ATTACHED

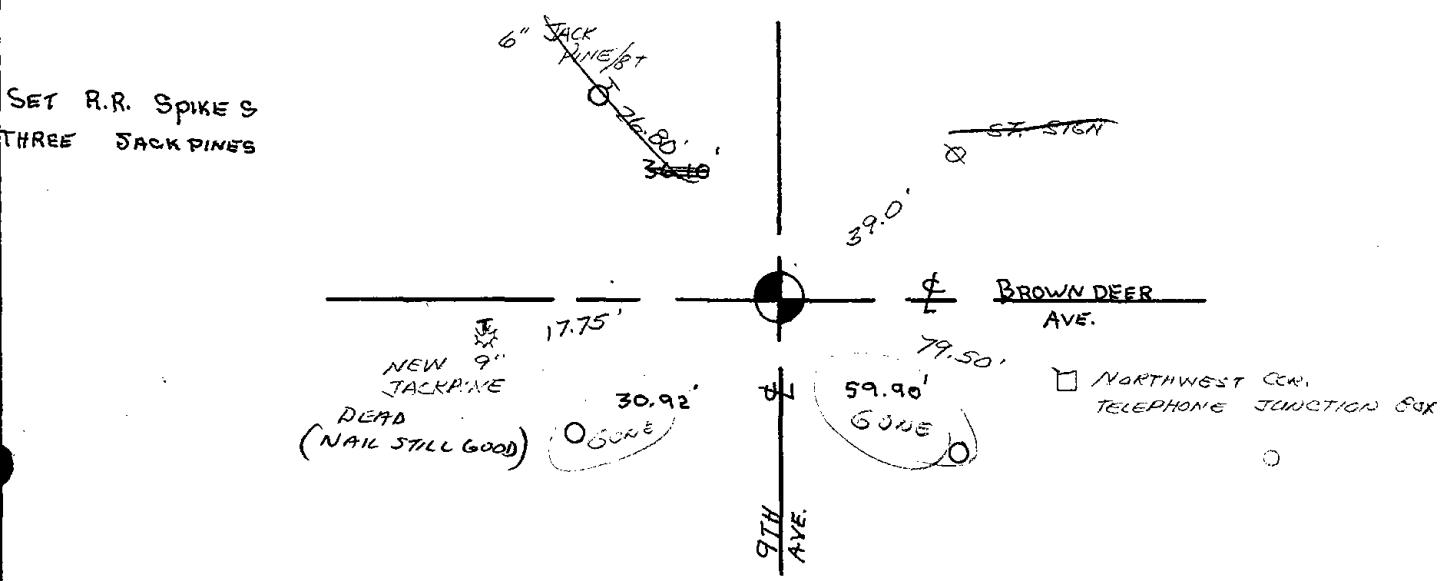
TOP BROKEN OFF 11-22-78 RN-SS
3-10-83 GR-SS OK
OK - 10/5/92 - JG
OK, 2-13-98 - JG

CERTIFIED CORRECT:

Registered Land Surveyor
DATE:

TIE SKETCH

(Show at least four ties)



U.S. PUBLIC LAND SURVEY MONUMENT RECORD

ADAMS COUNTY

TYPE OF MONUMENT: HARRISON

STATE PLANE COORDINATES: N _____

E _____

ELEVATION — M.S.L. DATUM: _____

THETA ANGLE: _____

FIELD BOOK: _____ PAGE _____

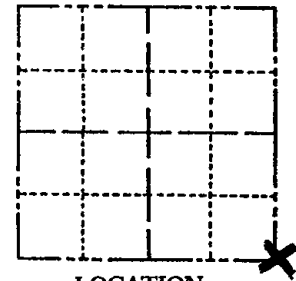
DRAWN BY: _____

CORNER NO. 89

SECTION 22

TOWN 19

RANGE 6



LOCATION
(Indicated by 'X')

BASIS FOR MONUMENT LOCATION

Show info such as: History of corner, with reference to Vol. and pg., dates, surveyor; exact description of monument replaced; if location computed, by taped or EDM traverse; landowner remarks, etc. (Use reverse side if necessary)
(in conformance with Section A-E 502 of the Wisconsin Administrative Code)

SEAL: _____

*TIE SHEET REDRAWN FOR CLARITY
NOV. 2008 — SEE TIE SHEET BY
SAM MULLEN, AUG. 13, 1971*

DATA SHOWN HERE ON
CERTIFIED CORRECT:

Registered Land Surveyor

DATE: _____

TIE SKETCH

Show at least four ties, also fence lines, roads, topo, size and type of witness trees' and if off road - best way to arrive at corner.

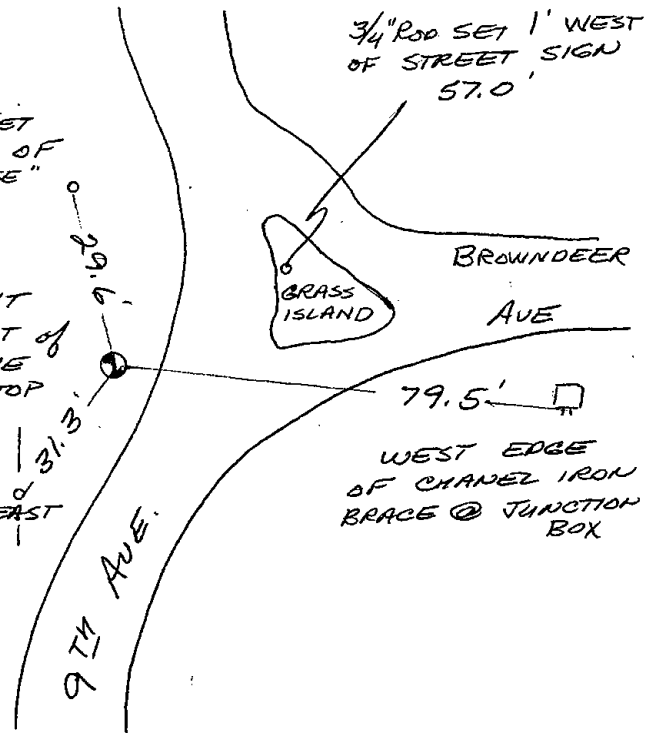
*HARRISON ON EXTENSION OF
9TH AVE @ AND 17' SOUTH OF
BROWND EER AVE. @ EXTENDED*

*3/4" ROD SET
11' SOUTH OF
"DEER MANAGE"
SIGN*

*MONUMENT
2 1/2' WEST OF
WEST EDGE
OF BLACKTOP*

*3/4" ROD,
SET 12' EAST
OF POST
IN FNC.*

*3/4" ROD SET 1' WEST
OF STREET SIGN
57.0'*



MAINTENANCE RECORD

Date	Init.	Remarks
Nov '08	SS	

*WEST EDGE
OF CHANEZ IRON
BRACE @ JUNCTION
BOX*