

23  
SECTION

19  
TOWN

06  
RANGE

# ADAMS COUNTY

COUNTY CORNER NO: 90

ROMPORTOL ID: 41906230020

## PUBLIC LAND SURVEY MONUMENT RECORD

TYPE OF MONUMENT: HARRISON  
ADAMS COUNTY COORDINATES, NAD 83 (2007)

N. 266511.278

E. 549233.053

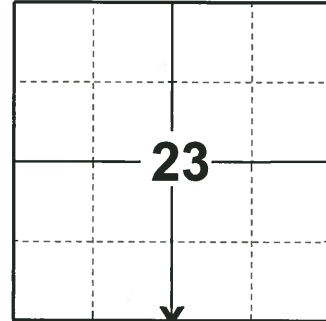
ELEVATION-      DATUM     

FIELD WORK DATE: 12/10/2018

### BASIS FOR MONUMENT LOCATION

1977 - PLS 1103 RAN EDM TRAVERSE AROUND SECTIONS 23 & 26, AND PARTS OF MANY ADJOINING SECTIONS TO DETERMINE SEARCH AREA FOR INVESTIGATION. EXCAVATION WITH BACKHOE YIELDED NO EVIDENCE OF THE ORIGINAL CORNER OR ANY REMONUMENTATION. COULD FIND NO EVIDENCE OF THE ORIGINAL BEARING TREES. RELOCATED CORNER BY SINGLE PROPORTIONATE MEASURE ON LINE BETWEEN ADJACENT SECTION CORNERS. SET HARRISON MONUMENT.

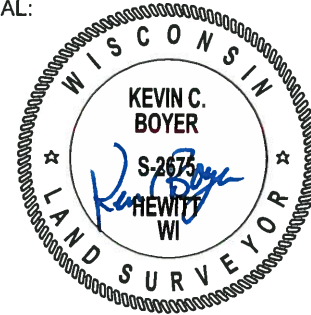
2018 - PLS 2675 FOUND A HARRISON MONUMENT 10" BELOW THE ROAD SURFACE AND 2 TIES. THE MONUMENT AGREES WITH THE EXCISTING TIES. ACCEPTED THE HARRISON MONUMENT AS THE CORNER LOCATION. SET 3 NEW TIES AND MEASURED TO THE TIES.



**LOCATION**

(INDICATE CORNER BY "X")

SEAL:



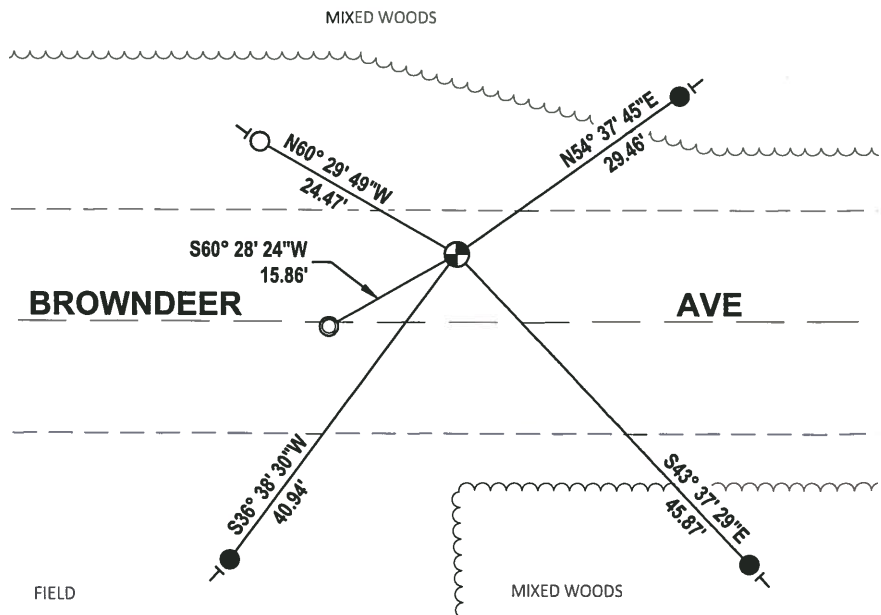
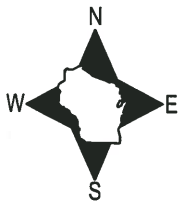
DATA SHOWN HERE ON THIS TIE SHEET IS CORRECT AND COMPLETE TO THE BEST OF MY KNOWLEDGE AND BELIEF.

PROFESSIONAL LAND SURVEYOR

DATE 1-18-19

### TIE SKETCH

NOTE: THE CORNER FALLS 7 1/2 NORTH OF THE CENTERLINE OF BROWNDEER AVE.

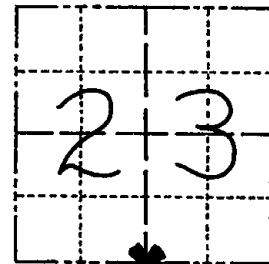


- SET 3/4" x 18" IRON REBAR, 1.50#/FT
- FOUND 3/4" IRON ROD
- ⊙ FOUND 1-1/4" O.D. IRON PIPE
- ⊕ FOUND HARRISON MONUMENT
- | VINYL "T" POST

# Government Land Corner Certificate

ADAMS County  
 TYPE OF MONUMENT: Harrison  
 STATE PLANE COORDINATES: N \_\_\_\_\_  
 E \_\_\_\_\_  
 ELEVATION — M.S.L. DATUM: \_\_\_\_\_  
 THETA ANGLE: \_\_\_\_\_  
 FIELD BOOK: 54 PAGE 25  
 DRAWN BY: SCOTT SORENSEN

CORNER NO. 90  
 SECTION 23  
 TOWN 19  
 RANGE 6



LOCATION  
 (Indicated by 'X')

## BASIS FOR MONUMENT LOCATION

Show info such as: History of corner, with reference to Vol. and pg., dates, surveyor; exact description of monument replaced; if location computed, by taped or EDM traverse; landowner remarks, etc. (Use reverse side if necessary)

Ran EDM/T2 traverse around Sections 23 & 26, and parts of many adjoining sections to determine search area for investigation.

Excavation with backhoe yielded no evidence of the original corner or any remonumentation. Could find no evidence of the original bearing trees.

Relocated corner by single proportionate measure on line between adjacent section corners.

Set monument on 8-31-77.

SEAL:



DATA SHOWN HERE ON  
 CERTIFIED CORRECT:

*Dale C. Hagen*  
 Registered Land Surveyor

DATE: December 27, 1977

## TIE SKETCH

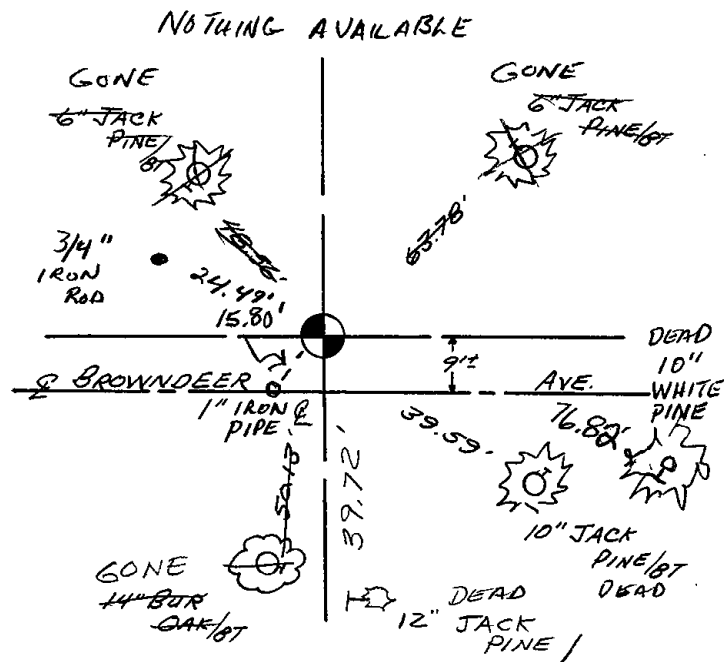
Show at least four ties, also fence lines, roads, topo, size and type of witness trees and if off road - best way to arrive at corner.

## NOTE

Ties in trees to nail in disc.

## MAINTENANCE RECORD

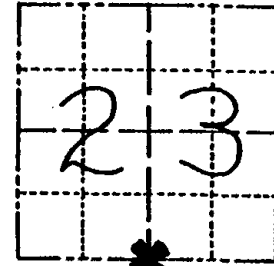
Date	Init.	Remarks
11-22-78	RN-SS	OK
3-10-83	GR-SS	OK 1 NEW
10/5/92	JG	2-NEW TIES, MON., OK
2-13-98	JG	OK
1-28-03	JG	OK
12-17-07	JG-SS	3-DEAD, NOTHING AVAILABLE, OK



# Government Land Corner Certificate

ADAMS County  
 TYPE OF MONUMENT: Harrison  
 STATE PLANE COORDINATES: N \_\_\_\_\_  
 E \_\_\_\_\_  
 ELEVATION — M.S.L. DATUM: \_\_\_\_\_  
 THETA ANGLE: \_\_\_\_\_  
 FIELD BOOK: 54 PAGE 25  
 DRAWN BY: SCOTT SORENSEN

CORNER NO. 90  
 SECTION 23  
 TOWN 19  
 RANGE 6



LOCATION  
 (Indicated by 'X')

## BASIS FOR MONUMENT LOCATION

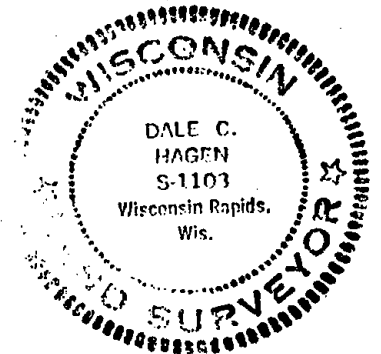
Show info such as: History of corner, with reference to Vol. and pg., dates, surveyor; exact description of monument replaced; if location computed, by taped or EDM traverse; landowner remarks, etc. (Use reverse side if necessary)  
 Ran EDM/T2 traverse around Sections 23 & 26, and parts of many adjoining sections to determine search area for investigation.

Excavation with backhoe yielded no evidence of the original corner or any remonumentation. Could find no evidence of the original bearing trees.

Relocated corner by single proportionate measure on line between adjacent section corners.

Set monument on 8-31-77.

SEAL:



DATA SHOWN HERE ON  
 CERTIFIED CORRECT:

Dale C. Hagen  
 Registered Land Surveyor

DATE: December 27, 1977

## TIE SKETCH

Show at least four ties, also fence lines, roads, topo, size and type of witness trees and if off road - best way to arrive at corner.

## NOTE

Ties in trees to nail in disc.

## MAINTENANCE RECORD

Date	Init.	Remarks
11-22-78	RU-SS	OK
3-10-83	GR-SS	OK 1 NEW
8-24-91	NC-NC	OK 2 NEW

