

30 SECTION 19 TOWN 06 RANGE

# ADAMS COUNTY

COUNTY CORNER NO: 95  
ROMPORTOL ID: 41906302000

## PUBLIC LAND SURVEY MONUMENT RECORD

TYPE OF MONUMENT: HARRISON  
ADAMS COUNTY COORDINATES, NAD 83 (2007)

N. 263810.663

E. 530771.858

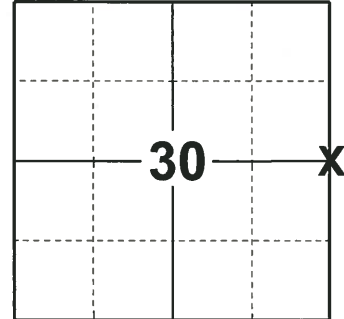
ELEVATION-      DATUM     

FIELD WORK DATE: 12/14/2018

### BASIS FOR MONUMENT LOCATION

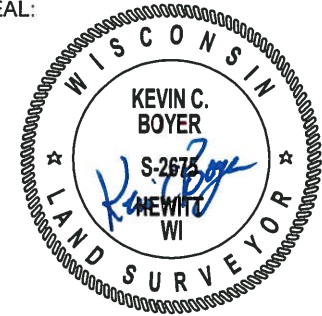
1979 - PLS 878 NO RESURVEYS OF RECORD EXCAVATED WITH A BACKHOE. FOUND A 3/4" X 24" IRON ROD. REPLACED THE ROD WITH A HARRISON MONUMENT AND TIED OUT. DUG A 8' X 10' HOLE AND FOUND NO OTHER MONUMENTS. LOCATION VERIFIED BY EDM MEASUREMENT.

2018 - PLS 2675 FOUND A HARRISON MONUMENT 2" BELOW THE ROAD SURFACE AND 2 TIES. THE MONUMENT AGREES WITH THE EXISTING TIES. ACCEPTED THE HARRISON MONUMENT AS THE CORNER LOCATION. SET 2 NEW TIES AND MEASURED TO THE TIES.



LOCATION  
(INDICATE CORNER BY "X")

SEAL:



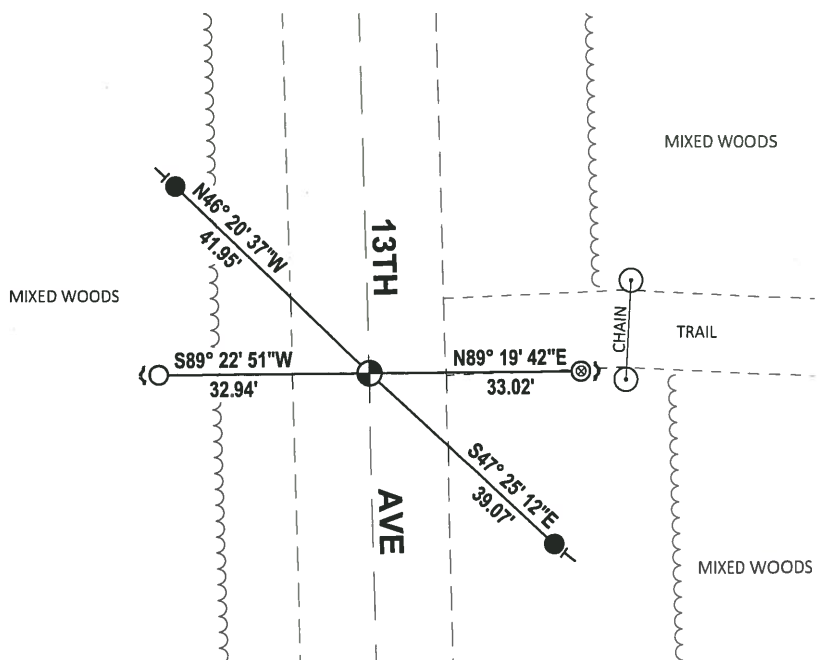
DATA SHOWN HERE ON THIS TIE SHEET IS CORRECT AND COMPLETE TO THE BEST OF MY KNOWLEDGE AND BELIEF.

PROFESSIONAL LAND SURVEYOR

DATE 1-18-19

### - TIE SKETCH -

NOTE: THE CORNER FALLS 0.5'± EAST OF THE CENTERLINE OF 13TH AVE.

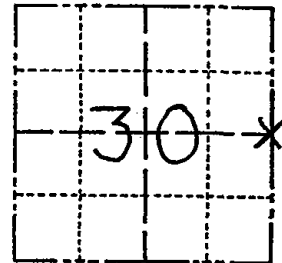


- SET 3/4" x 18" IRON REBAR, 1.50#/FT
- FOUND 3/4" IRON ROD
- ⊙ FOUND 1-1/2" O.D. IRON PIPE
- ⊕ FOUND HARRISON MONUMENT
- ~ STEEL FENCE POST
- VINYL "T" POST

# Government Land Corner Certificate

Adams County  
 TYPE OF MONUMENT: Harrison standard  
 STATE PLANE COORDINATES: N \_\_\_\_\_  
 E \_\_\_\_\_  
 ELEVATION — M.S.L. DATUM: \_\_\_\_\_  
 THETA ANGLE: \_\_\_\_\_  
 FIELD BOOK: 83 (102) PAGE 138 (62)  
 DRAWN BY: N.J.

CORNER NO. 95  
 SECTION 30  
 TOWN 19  
 RANGE 6



LOCATION  
 (Indicated by 'X')

## BASIS FOR MONUMENT LOCATION

Show info such as: History of corner, with reference to Vol. and pg., dates, surveyor; exact description of monument replaced; if location computed, by taped or EDM traverse; landowner remarks, etc. (Use reverse side if necessary)

No resurveys of record. Excavated with backhoe. Found 3/4" x 24" iron rod. Replaced rod with Harrison monument. Dug 8' x 10' hole and found no other monument. Location verified by EDM measurement.

SEAL:



DATA SHOWN HERE ON  
 CERTIFIED CORRECT:

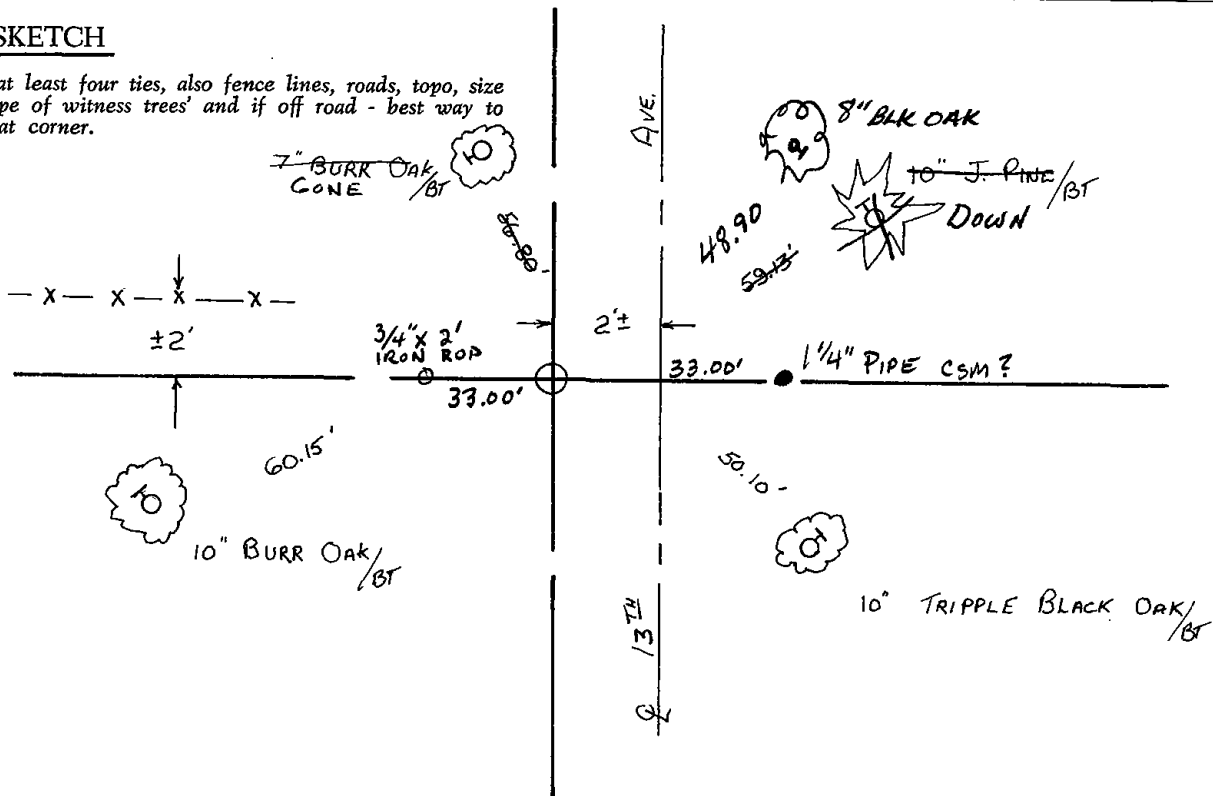
*Anthony B. Kiedrowski*  
 Registered Land Surveyor

DATE: 12/21/79

1-GONE, 1-NEW TIE 1-4-93 BS-JG  
 OK, 2-11-98 - JG  
 1-GONE, 2-NEW, MON. OK, 12-12-02-JG

## TIE SKETCH

Show at least four ties, also fence lines, roads, topo, size and type of witness trees and if off road - best way to arrive at corner.

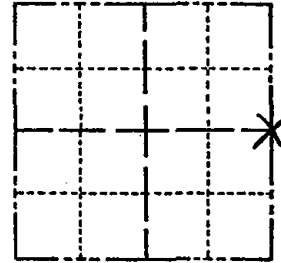




# Government Land Corner Certificate

ADAMS County  
 TYPE OF MONUMENT: Harrison  
 STATE PLANE COORDINATES: N \_\_\_\_\_  
 E \_\_\_\_\_  
 ELEVATION — M.S.L. DATUM: \_\_\_\_\_  
 THETA ANGLE: \_\_\_\_\_  
 FIELD BOOK: 83 (102) PAGE 138 (62)  
 DRAWN BY: R. NUBER

CORNER NO. 95  
 SECTION 30  
 TOWN 19  
 RANGE 6



LOCATION  
(Indicated by 'X')

## BASIS FOR MONUMENT LOCATION

Show info such as: History of corner, with reference to Vol. and pg., dates, surveyor; exact description of monument replaced; if location computed, by taped or EDM traverse; landowner remarks, etc. (Use reverse side if necessary)

No resurveys on record. Excavated 4' x 12' hole with backhoe. Found Nothing. No strong possession lines at either the quarter line or forty lines.

Other than a 1/2" x 24" rebar. This point is within 3' of being half way between section corners, but is quite a way out of a straight line. However, this point appears to have been used for some unrecorded surveys south and east of here. Accepted the rebar found as the quarter corner and replaced it with a Harrison monument.

SET MARK  
 4/22/80  
 RN-SS

SEAL:



DATA SHOWN HERE ON  
 CERTIFIED CORRECT:

Anthony B. Kiedrowski  
 Registered Land Surveyor

DATE: 4/10/80

## TIE SKETCH

Show at least four ties, also fence lines, roads, topo, size and type of witness trees and if off road - best way to arrive at corner.

