

27 SECTION 19 TOWN 06 RANGE

ADAMS COUNTY

COUNTY CORNER NO: 98
ROMPORTOL ID: 41906272000

PUBLIC LAND SURVEY MONUMENT RECORD

TYPE OF MONUMENT: HARRISON
ADAMS COUNTY COORDINATES, NAD 83 (2007)

N. 263848.629

E. 546615.864

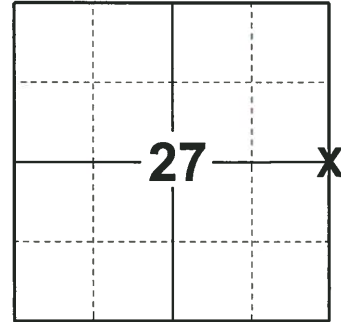
ELEVATION- DATUM

FIELD WORK DATE: 12/12/2018

BASIS FOR MONUMENT LOCATION

1973 - PLS 878 DUG WITH A BACKHOE AND FOUND NOTHING. CALCULATED THE CORNER LOCATION ON A STRAIGHT LINE EQUIDISTANT BETWEEN SECTION CORNERS. SET A HARRISON MONUMENT AT THE CALCULATED LOCATION AND TIED OUT.

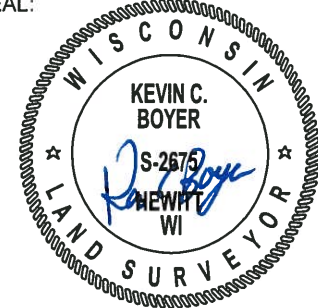
2018 - PLS 2675 FOUND A HARRISON MONUMENT 6" BELOW THE GROUND SURFACE, 2 TIES AND 1 WITNESS. THE MONUMENT AGREES WITH THE EXISTING TIES AND WITNESS. ACCEPTED THE HARRISON MONUMENT AS THE CORNER LOCATION. SET 2 NEW TIES AND MEASURED TO THE TIES AND WITNESS.



LOCATION

(INDICATE CORNER BY "X")

SEAL:



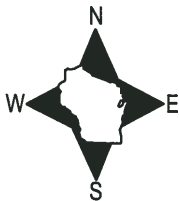
DATA SHOWN HERE ON THIS TIE SHEET IS CORRECT AND COMPLETE TO THE BEST OF MY KNOWLEDGE AND BELIEF.

PROFESSIONAL LAND SURVEYOR

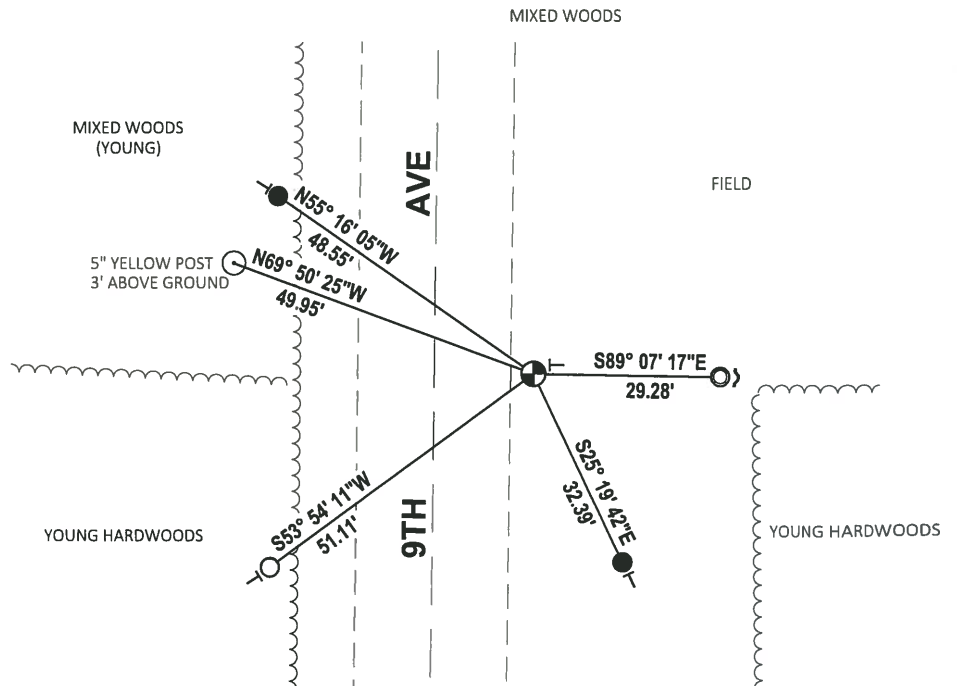
DATE 1-18-19

TIE SKETCH

NOTE: THE CORNER FALLS 15'± EAST OF THE CENTERLINE OF 9TH AVE.



- SET 3/4" x 18" IRON REBAR, 1.50#/FT
- FOUND 3/4" IRON ROD
- FOUND 1-1/4" O.D. IRON PIPE
- ⊕ FOUND HARRISON MONUMENT
- ~ STEEL FENCE POST
- VINYL "T" POST



ADAMS COUNTY

Survey Monument Record

TYPE OF MONUMENT: Harrison standard

STATE PLANE COORDINATES: N _____

E _____

ELEVATION — M.S.L. DATUM: _____

THETA ANGLE: _____

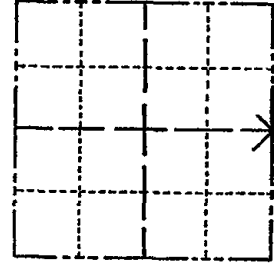
FIELD BOOK: 108 PAGE 44

CORNER NO. 286

SECTION 27

TOWN 19

RANGE 6



LOCATION (Indicated by 'X')

SEAL:

BASIS FOR MONUMENT LOCATION

(Use reverse side if necessary)

Show info such as: History of corner, with reference to Vol. and pg, dates, surveyor; exact description of monument replaced; if location computed, by taped or EDM traverse; landowner remarks, etc.

Dug with backhoe, found nothing. Set on a straight line equidistant between section corners.



OK 11-22-78 RN-SS
3-10-83 GR-SS OK
1-8-93 JG. BS OK
2-GONE 3-NEW, MON. OK, 2-23-98-JG
OK, 1-24-03-JG

CERTIFIED CORRECT:

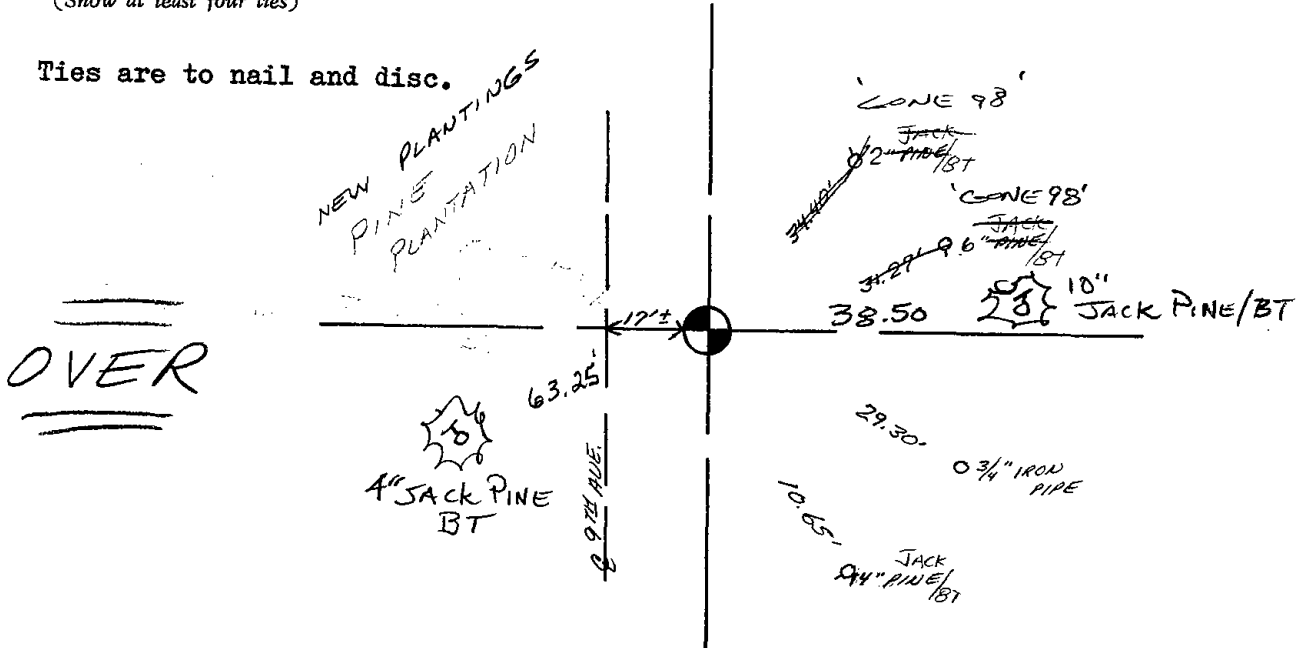
Anthony B. Kiedrowski
Registered Land Surveyor

DATE: 9/18/73

TIE SKETCH

(Show at least four ties)

Ties are to nail and disc.



U.S. PUBLIC LAND SURVEY MONUMENT RECORD

ADAMS COUNTY

TYPE OF MONUMENT: HARRISON

STATE PLANE COORDINATES: N _____
E _____

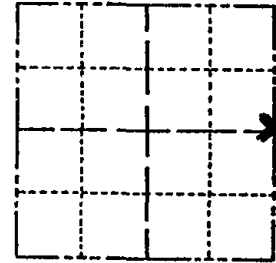
ELEVATION — M.S.L. DATUM: _____

THETA ANGLE: _____

FIELD BOOK: _____ PAGE _____

DRAWN BY: _____

CORNER NO. 98
SECTION 27
TOWN 19
RANGE 6



LOCATION
(Indicated by 'X')

BASIS FOR MONUMENT LOCATION

Show info such as: History of corner, with reference to Vol. and pg., dates, surveyor; exact description of monument replaced; if location computed, by taped or EDM traverse; landowner remarks, etc. (Use reverse side if necessary)
(in conformance with Section A-E 502 of the Wisconsin Administrative Code)

FIRE DESTROYED TREES - SEE TIE SHEET BY A.B. KIEDROWSKI 9-18-73

SEAL:

DATA SHOWN HERE ON
CERTIFIED CORRECT:

Registered Land Surveyor

DATE: _____

TIE SKETCH

Show at least four ties, also fence lines, roads, topo, size and type of witness trees' and if off road - best way to arrive at corner.

NEW PINE PLANTINGS

20'

INSIDE EDGE AT TOP OF 5" DIA. IRON PIPE UP 3' PAINTED YELLOW

SLOPE TAPE 50.02'

NEW PINE PLANTINGS



35'

AVE

17'

29.30' 3/4" IRON PIPE

STEEL POST/SIGN @ CORNER

3/4" ROD, SET 51.1' S 45° W

Q 9 III Q

MAINTENANCE RECORD

Date	Init.	Remarks
<i>Nov '08</i>	<i>SS</i>	<i>NEW TIES</i>