

26 SECTION 19 TOWN 06 RANGE

ADAMS COUNTY

COUNTY CORNER NO: 99
 ROMPORTOL ID: 41906262000

PUBLIC LAND SURVEY MONUMENT RECORD

TYPE OF MONUMENT: HARRISON
 ADAMS COUNTY COORDINATES, NAD 83 (2007)

N. 263892.352

E. 551871.058

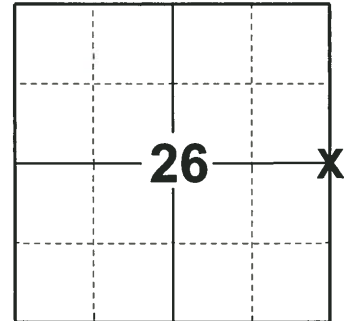
ELEVATION- _____ DATUM _____

FIELD WORK DATE: 12/12/2018

BASIS FOR MONUMENT LOCATION

1978 - PLS 878 EXCAVATED WITH BACKHOE, FOUND BRICK CALLED FOR BY PREVIOUS COUNTY SURVEYOR NOVAK, IN VOL 2, COUNTY SURVEYOR RECORDS, PAGE 158, MAY, 1934. MONUMENT FOUND WAS A CONGLOMERATE OF BRICK AND MORTAR. LOWERED BRICK AND SET HARRISON MONUMENT ON TOP.

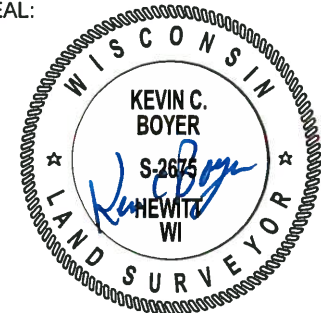
2018 - PLS 2675 FOUND A HARRISON MONUMENT 12" BELOW THE ROAD SURFACE, 1 TIE, 1 PROPERTY IRON AND 1 WITNESS. THE MONUMENT AGREES WITH THE EXISTING TIE AND WITNESS. ACCEPTED THE HARRISON MONUMENT AS THE CORNER LOCATION. SET 3 NEW TIES AND MEASURED TO THE TIES, PROPERTY IRON AND WITNESS.



LOCATION

(INDICATE CORNER BY "X")

SEAL:



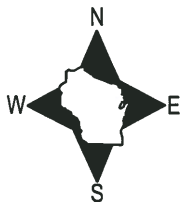
DATA SHOWN HERE ON THIS TIE SHEET IS CORRECT AND COMPLETE TO THE BEST OF MY KNOWLEDGE AND BELIEF.

PROFESSIONAL LAND SURVEYOR

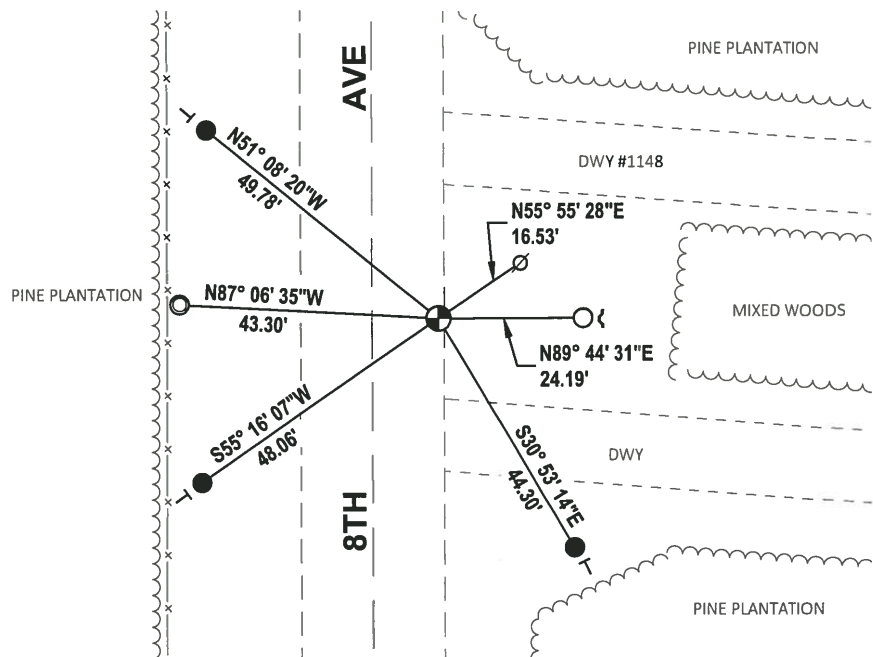
DATE 1-18-19

TIE SKETCH

NOTE: THE CORNER FALLS 11'± EAST OF THE CENTERLINE OF 8TH AVE.



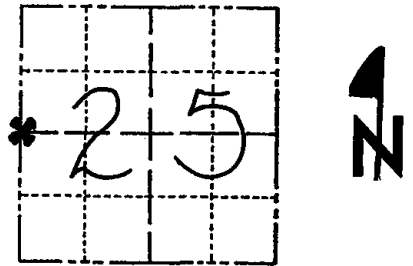
- SET 3/4" x 18" IRON REBAR, 1.50#/FT
- FOUND 3/4" IRON ROD
- ⊙ FOUND 1-1/4" O.D. IRON PIPE
- ⊕ FOUND HARRISON MONUMENT
- ∅ WITNESS POWER POLE
- ~ STEEL FENCE POST
- VINYL "T" POST



Government Land Corner Certificate

ADAMS County
 TYPE OF MONUMENT: Harrison
 STATE PLANE COORDINATES: N _____
 E _____
 ELEVATION — M.S.L. DATUM: _____
 THETA ANGLE: _____
 FIELD BOOK: 54 (1967) PAGE 23 (1967)
 DRAWN BY: SCOTT SORENSEN

CORNER NO. 99
99
 SECTION 25
 TOWN 19
 RANGE 6



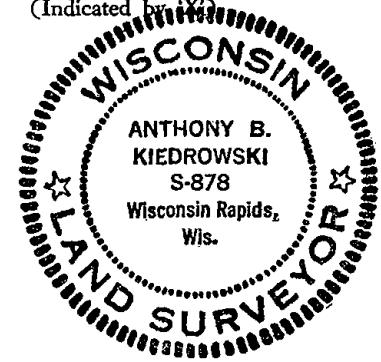
LOCATION
 (Indicated by star)

BASIS FOR MONUMENT LOCATION

Show info such as: History of corner, with reference to Vol. and pg., dates, surveyor; exact description of monument replaced; if location computed, by taped or EDM traverse; landowner remarks, etc. (Use reverse side if necessary)

Excavated with backhoe, found brick called for by previous county surveyor Novak, in Vol 2, County surveyor records, page 158, May, 1934. Monument found was a conglomerate of brick and mortar as shown below. Lowered brick and set Harrison monument on top.

SEAL:



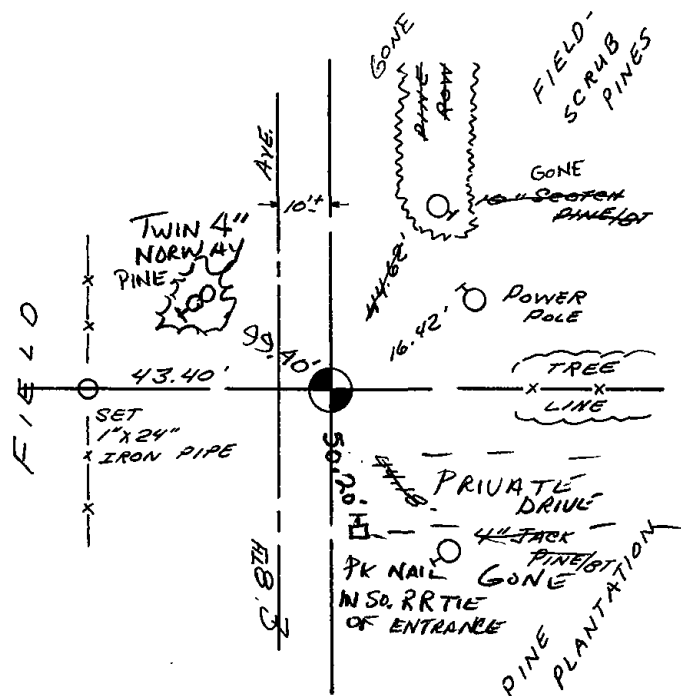
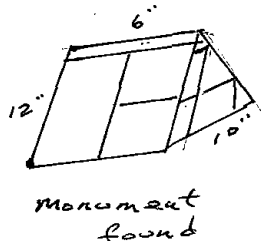
DATA SHOWN HERE ON
 CERTIFIED CORRECT:

Anthony B. Kiedrowski
 Registered Land Surveyor

DATE: 1/16/78

TIE SKETCH

Show at least four ties, also fence lines, roads, topo, size and type of witness trees' and if off road - best way to arrive at corner.



MAINTENANCE RECORD

Date	Init.	Remarks
11-29-78	RN-DA	OK
3-10-83	GR-SS	OK
1-8-93	JG-BS	2-GONE, 2-NEW TIES
2-23-98	JG	OK
12-17-07	JG-SS	OK