

PUBLIC LAND SURVEY MONUMENT RECORD

TYPE OF MONUMENT: HARRISON (BROKEN-TOP)
ADAMS COUNTY COORDINATES, NAD 83 (2007)

N. 261179.760
E. 530818.180

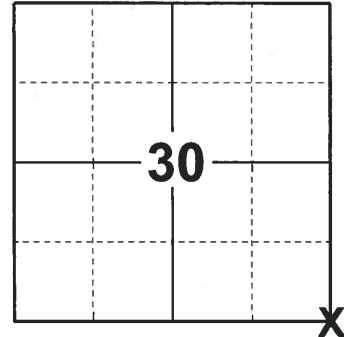
ELEVATION- _____ DATUM _____

FIELD WORK DATE: 12/14/2018

BASIS FOR MONUMENT LOCATION

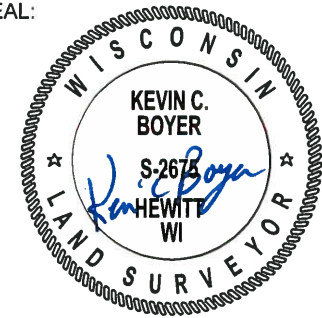
1974 - PLS 878 EXCAVATED WITH A BACKHOE AND FOUND A 1/2" X 24" IRON PIPE. MONUMENTED THE SAME WITH A HARRISON AND TIED OUT.

2018 - PLS 2675 FOUND A MAG NAIL IN THE ROAD SURFACE, 1 PROPERTY IRON AND 3 WITNESSES. REMOVED THE MAG NAIL AND FOUND A HARRISON MONUMENT WITH A BROKEN-TOP 18" BELOW. THE MONUMENT AGREES WITH THE EXISTING WITNESSES. ACCEPTED THE HARRISON MONUMENT WITH A BROKEN-TOP AS THE CORNER LOCATION. SET 3 NEW TIES AND MEASURED TO THE TIES, PROPERTY IRON AND WITNESSES.



LOCATION
(INDICATE CORNER BY "X")

SEAL:



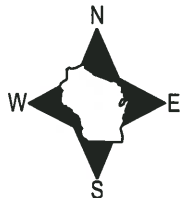
DATA SHOWN HERE ON THIS TIE SHEET IS CORRECT AND COMPLETE TO THE BEST OF MY KNOWLEDGE AND BELIEF.

PROFESSIONAL LAND SURVEYOR

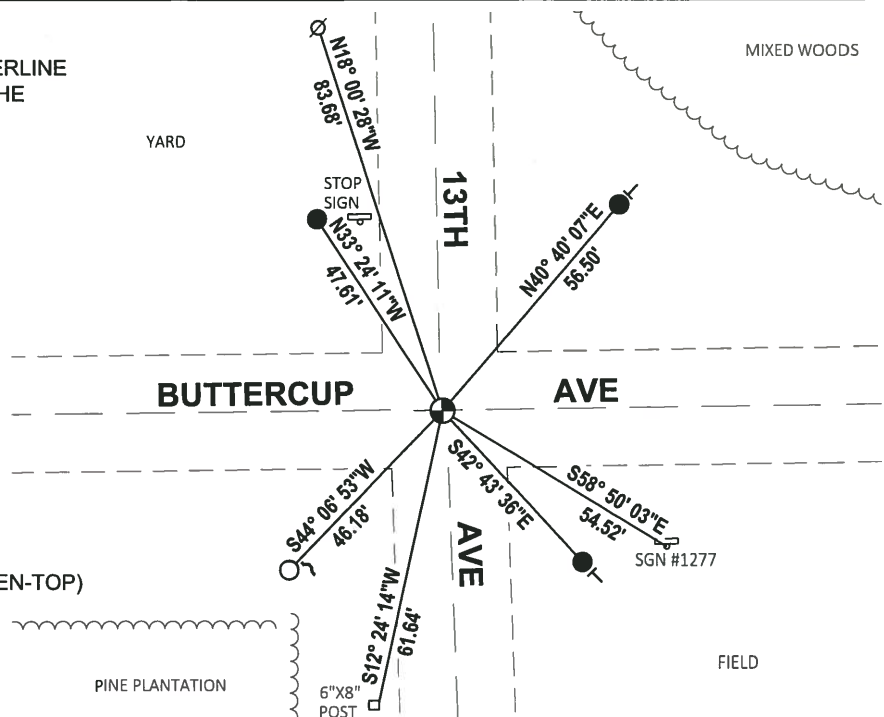
DATE 1-18-19

TIE SKETCH

NOTE: THE CORNER FALLS ON THE CENTERLINE OF BUTTERCUP AVE AND 0.5± WEST OF THE CENTERLINE OF 13TH AVE.



- SET 3/4" x 18" IRON REBAR, 1.50#/FT
- FOUND 3/4" IRON ROD
- ⊕ FOUND HARRISON MONUMENT (BROKEN-TOP)
- ⊗ WITNESS POWER POLE
- ↗ STEEL FENCE POST
- └ VINYL "T" POST

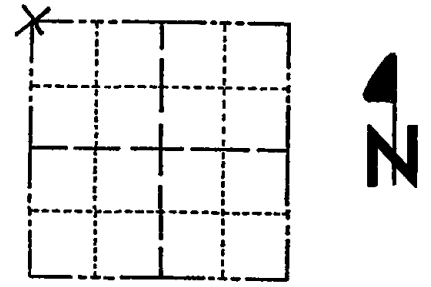


ADAMS COUNTY

Survey Monument Record

CORNER NO. 455
 SECTION 32
 TOWN 19
 RANGE 6

TYPE OF MONUMENT: Harrison Standard
 STATE PLANE COORDINATES: N _____
 E _____
 ELEVATION — M.S.L. DATUM: _____
 THETA ANGLE: _____
 FIELD BOOK: _____ PAGE _____



LOCATION
(Indicated by 'X')

SEAL:

BASIS FOR MONUMENT LOCATION

(Use reverse side if necessary)

Show info such as: History of corner, with reference to Vol. and pg, dates, surveyor; exact description of monument replaced; if location computed, by taped or EDM traverse; landowner remarks, etc.

Excavated with backhoe. Found $\frac{1}{2}$ " x 24" iron pipe. Monumented same with Harrison.



OK 11-29-78 RH-SS
 3-11-83 GR-SS OK
 1-GONE, 2-NEW TIES 1-A-93 JG-B5
 OK, 2-11-98 - JG
 OK, 12-12-02 - JG
 " 12-21-07 JG-SS

CERTIFIED CORRECT:

Anthony B. Kiedrowski
 Registered Land Surveyor

DATE: July 31, 1974

TIE SKETCH

(Show at least four ties)

All ties to nail and disc.

