

27
SECTION

19
TOWN

06
RANGE

ADAMS COUNTY

COUNTY CORNER NO: 108

ROMPORTOL ID: 41906270020

PUBLIC LAND SURVEY MONUMENT RECORD

TYPE OF MONUMENT: HARRISON
ADAMS COUNTY COORDINATES, NAD 83 (2007)

N. 261208.434

E. 544017.430

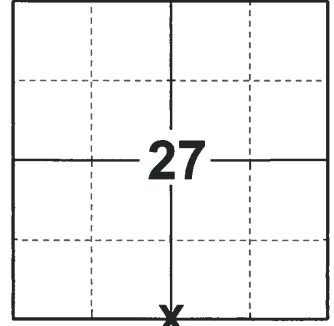
ELEVATION- DATUM

FIELD WORK DATE: 12/12/2018

BASIS FOR MONUMENT LOCATION

1973 - PLS 878 EXCAVATED AREA WITH A BACKHOE AND FOUND NOTHING. CALCULATED THE CORNER LOCATION ON A STRAIGHT LINE EQUIDISTANT BETWEEN SECTION CORNERS. SET A HARRISON MONUMENT AT THE CALCULATED LOCATION AND TIED OUT.

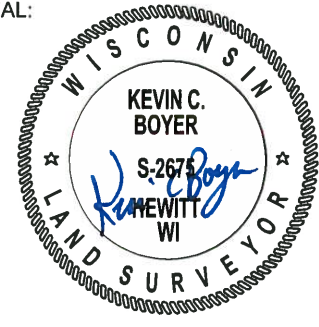
2018 - PLS 2675 FOUND A HARRISON MONUMENT 12" BELOW THE ROAD SURFACE AND 2 TIES. THE MONUMENT AGREES WITH THE EXISTING TIES. ACCEPTED THE HARRISON MONUMENT AS THE CORNER LOCATION. SET 2 NEW TIES AND MEASURED TO THE TIES.



LOCATION

(INDICATE CORNER BY "X")

SEAL:



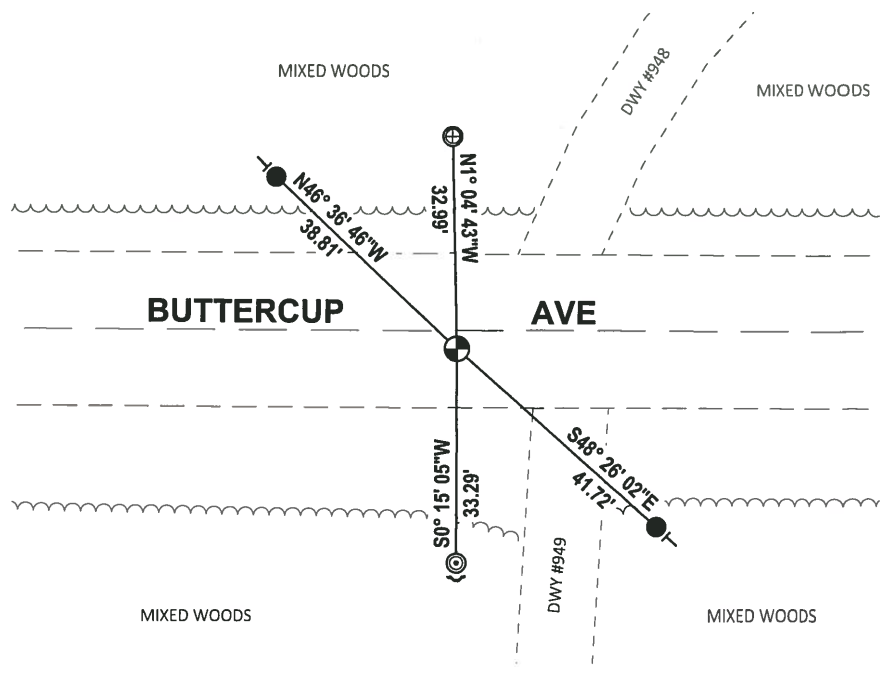
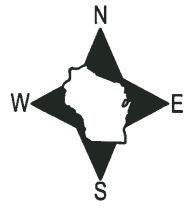
DATA SHOWN HERE ON THIS TIE SHEET IS CORRECT AND COMPLETE TO THE BEST OF MY KNOWLEDGE AND BELIEF.

PROFESSIONAL LAND SURVEYOR

DATE 1-18-19

- TIE SKETCH

NOTE: THE CORNER FALLS 3'± SOUTH OF THE CENTERLINE OF BUTTERCUP AVE.



- SET 3/4" x 18" IRON REBAR, 1.50#/FT
- ⊕ FOUND 1" O.D. IRON PIPE
- ⊙ FOUND 2-3/8" O.D. IRON PIPE
- ⊕ FOUND HARRISON MONUMENT
- ┌ STEEL FENCE POST
- └ VINYL "T" POST

ADAMS COUNTY

CORNER NO. 285

Survey Monument Record

SECTION 27

TYPE OF MONUMENT: Harrison standard

TOWN 19

STATE PLANE COORDINATES: N

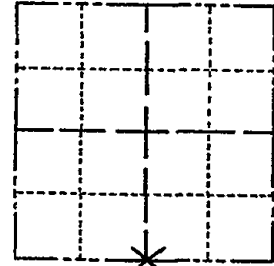
RANGE 6

E

ELEVATION - M.S.L. DATUM:

THETA ANGLE:

FIELD BOOK: 108 PAGE 43



LOCATION (Indicated by 'X')

SEAL:

BASIS FOR MONUMENT LOCATION

(Use reverse side if necessary)

Show info such as: History of corner, with reference to Vol. and pg, dates, surveyor; exact description of monument replaced; if location computed, by taped or EDM traverse; landowner remarks, etc.

Excavated area with backhoe, found nothing. Point set on a straight line equidistant between section corners.



OK 11-22-78 RN-S
4-21-83 GR-SS OK
8-19-92 JG-BS OK
ALL OK, 2-23-98 - JG
1-GONE 4-LEFT, 1-6-03-JG
2-GONE 2-LEFT, 12-17-07 - JG-SS

CERTIFIED CORRECT:

Signature of Anthony B. Kiedrowski, Registered Land Surveyor

DATE: 9/18/73

TIE SKETCH

(Show at least four ties)

Ties are to nail and disc.

