

26
SECTION

19
TOWN

06
RANGE

ADAMS COUNTY

COUNTY CORNER NO: 110

ROMPORTOL ID: 41906260020

PUBLIC LAND SURVEY MONUMENT RECORD

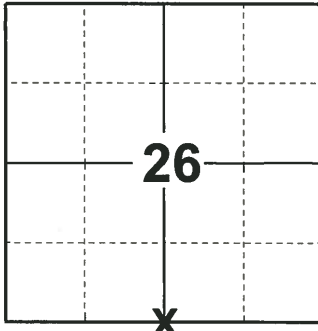
TYPE OF MONUMENT: HARRISON
ADAMS COUNTY COORDINATES, NAD 83 (2007)

N. 261224.683

E. 549255.091

ELEVATION- _____ DATUM _____

FIELD WORK DATE: 12/12/2018



LOCATION

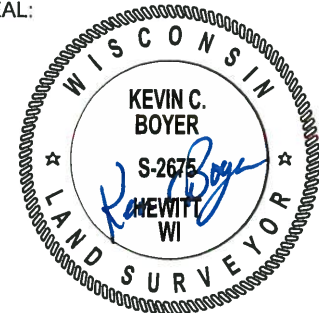
(INDICATE CORNER BY "X")

BASIS FOR MONUMENT LOCATION

1977 - PLS 1323 KIEDROWSKI ENGINEERING EXCAVATED AT THIS POINT IN AUGUST OF THIS YEAR, BUT NO EVIDENCE OF THE ORIGINAL CORNER OR ANY REMONUMENTATION OF THE CORNER WAS FOUND. CALCULATED THE CORNER LOCATION ON A STRAIGHT LINE EQUIDISTANT BETWEEN THE SECTION CORNERS EAST AND WEST. SET A HARRISON MONUMENT IN THE GRAVEL ROAD, DOWN 9" AT THE CALCULATED LOCATION AND TIED OUT THE CORNER.

2018 - PLS 2675 FOUND A HARRISON MONUMENT 8" BELOW THE ROAD SURFACE. FOUND NO EVIDENCE OF ANY OF THE EXISTING TIES OR WITNESSES. AFTER REVIEW THE CORNER FALLS NEAR EQUIDISTANT AND ON LINE BETWEEN ADJACENT SECTION CORNERS. ACCEPTED THE HARRISON MONUMENT AS THE BEST EVIDENCE OF THE CORNER LOCATION. SET 4 NEW TIES AND MEASURED TO THE TIES.

SEAL:



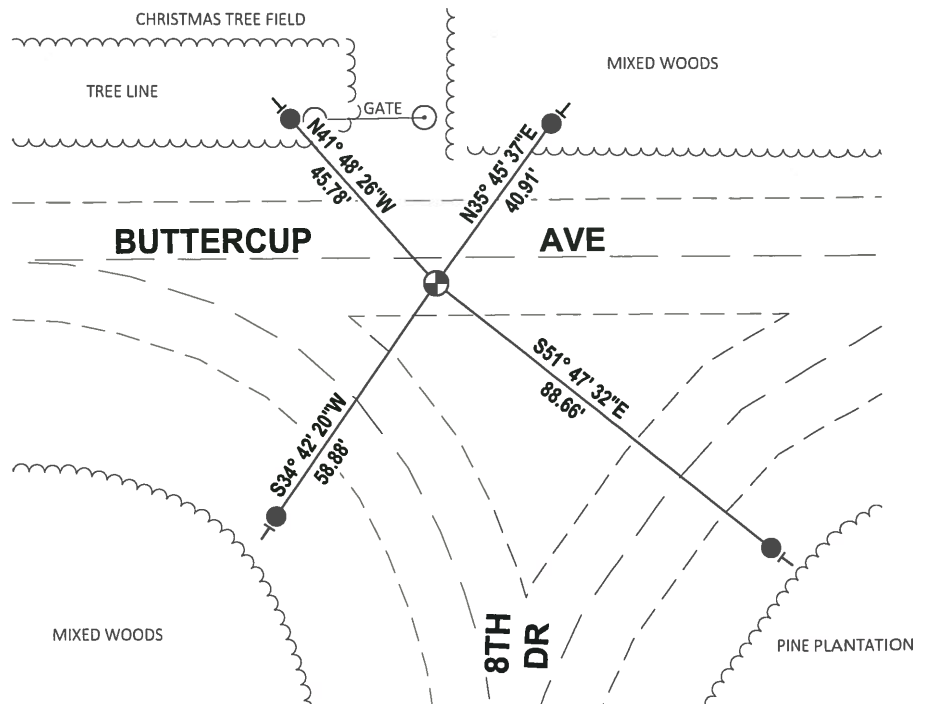
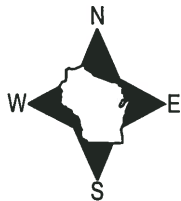
DATA SHOWN HERE ON THIS TIE SHEET IS CORRECT AND COMPLETE TO THE BEST OF MY KNOWLEDGE AND BELIEF.

PROFESSIONAL LAND SURVEYOR

DATE 1-18-19

TIE SKETCH

NOTE: THE CORNER FALLS 5± SOUTH OF THE CENTERLINE OF BUTTERCUP AVE.



- SET 3/4" x 18" IRON REBAR, 1.50#/FT
- ⊙ FOUND HARRISON MONUMENT
- VINYL "T" POST

ADAMS COUNTY

Survey Monument Record

TYPE OF MONUMENT: HARRISON

STATE PLANE COORDINATES: N _____

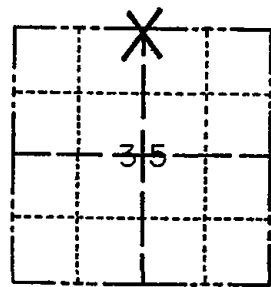
E _____

ELEVATION — M.S.L. DATUM: _____

THETA ANGLE: _____

FIELD BOOK: _____ PAGE _____

CORNER NO. 110
SECTION 35
TOWN 19N
RANGE 6E



LOCATION
(Indicated by 'X')

SEAL:

BASIS FOR MONUMENT LOCATION

(Use reverse side if necessary)

Show info such as: History of corner, with reference to Vol. and pg, dates, surveyor; exact description of monument replaced; if location computed, by taped or EDM traverse; landowner remarks, etc.

Set the corner on a straight line equidistant between the section corners East and West.

Kiedrowski Engineering excavated at this point in August of this year, but no evidence of the original corner or any remonumentation of the corner was found.

Set a Harrison monument in the gravel road, down 9".



OK 11-22-78 RN-SS
3-10-83 GR-SS OK
8-19-92 JG-BS - OK
3-11-98 JG-SS - UNCOVERED MON. & RETIED
1-25-03 OK-JG
OK, 1-17-07 - JG-SS

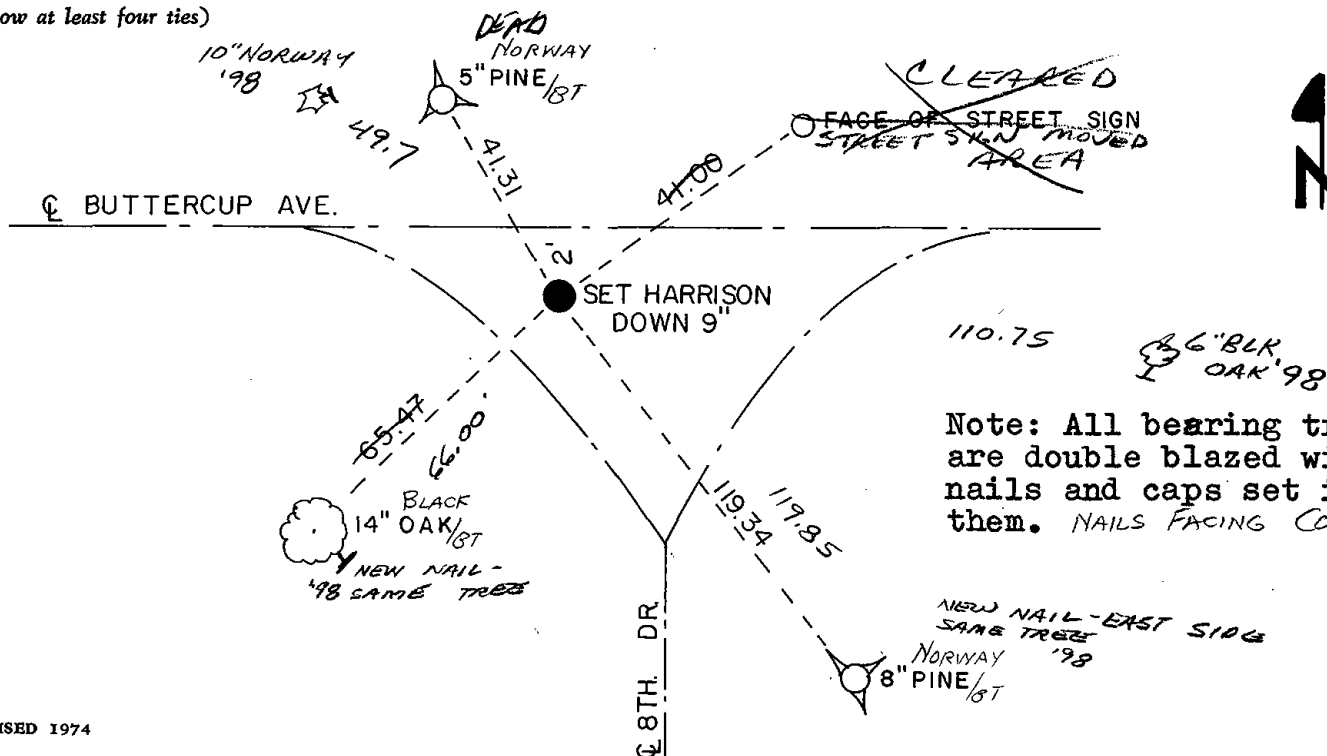
CERTIFIED CORRECT:

William C. Jung
Registered Land Surveyor

DATE: September 29, 1977

TIE SKETCH

(Show at least four ties)



Note: All bearing trees are double blazed with nails and caps set in them. NAILS FACING COR.