

26
SECTION

19
TOWN

06
RANGE

ADAMS COUNTY

COUNTY CORNER NO: 111

ROMPORTOL ID: 4190626000

PUBLIC LAND SURVEY MONUMENT RECORD

TYPE OF MONUMENT: HARRISON
ADAMS COUNTY COORDINATES, NAD 83 (2007)

N. 261242.140

E. 551867.167

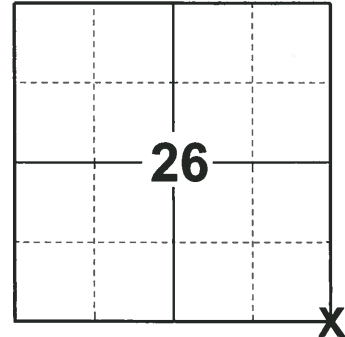
ELEVATION- _____ DATUM _____

FIELD WORK DATE: 12/12/2018

BASIS FOR MONUMENT LOCATION

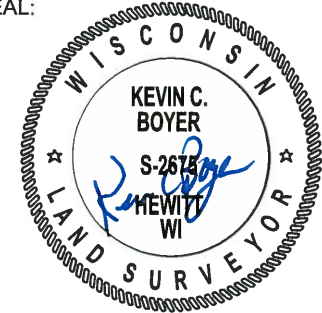
1978 - PLS 878 EXCAVATED WITH BACKHOE. FOUND 4X6X9" SANDSTONE RIGHT AT SURFACE OF GROUND. IT APPEARED TO BE THE BOTTOM OF WHAT ONCE WAS A LONGER STONE. CAREFUL EXCAVATION PROVED THAT STONE WAS DUG IN AND THAT IT HAD NOT BEEN DISTURBED OTHERWISE. LOWERED STONE AND SET HARRISON MONUMENT ON TOP. EDM TRAVERSE VERIFIED LOCATION. THIS MATCHED BRICKS FOUND AT $W\frac{1}{2}$ CORNER AS SET BY COUNTY SURVEYOR HURLY IN 1939. PREVIOUS ADAMS COUNTY HIGHWAY COMMISSIONER CLARENCE HOLMES RECALLED SEEING A STONE HERE YEARS AGO. HE HAD DUG HERE SEVERAL YEARS AGO BUT WAS UNABLE TO FIND THE STONE BECAUSE OF DIGGING TO FAR TO THE WEST. AN EXTENSIVE TRAVERSE OF SECTION 25 AND OTHER SECTIONS NORTH AND SOUTH OF HERE INDICATED THE STONE TO BE FURTHER EAST, WHICH IT WAS.

2018 - PLS 2675 FOUND A HARRISON MONUMENT 12" BELOW THE DRIVEWAY SURFACE AND 1 WITNESS. THE MONUMENT AGREES WITH THE EXISTING WITNESS. ACCEPTED THE HARRISON MONUMENT AS THE CORNER LOCATION. SET 4 NEW TIES AND MEASURED TO THE TIES AND WITNESS.



LOCATION
(INDICATE CORNER BY "X")

SEAL:

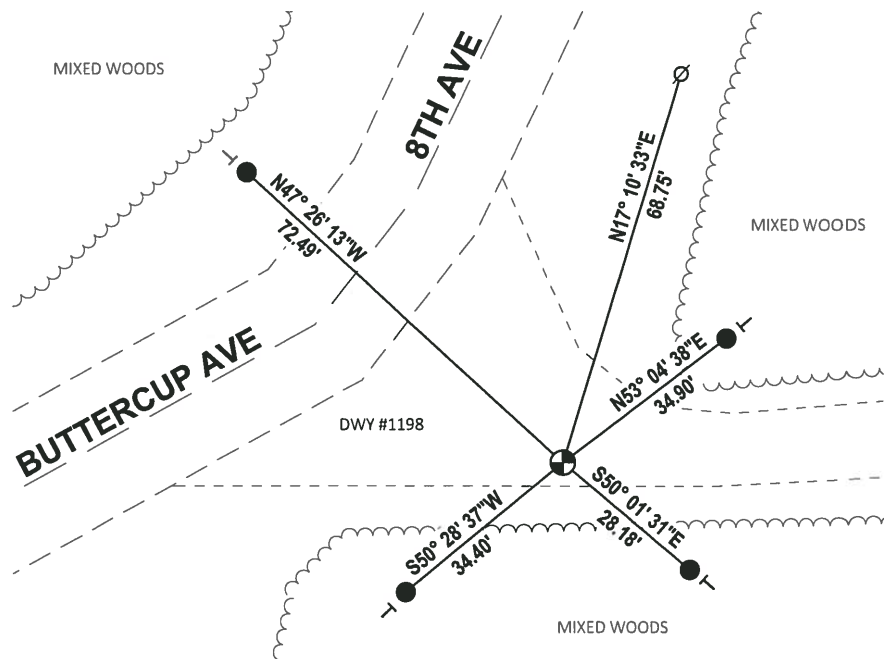
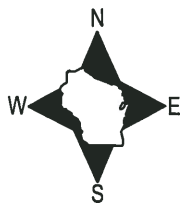


DATA SHOWN HERE ON THIS TIE SHEET IS CORRECT AND COMPLETE TO THE BEST OF MY KNOWLEDGE AND BELIEF.

PROFESSIONAL LAND SURVEYOR

DATE 1-18-19

TIE SKETCH

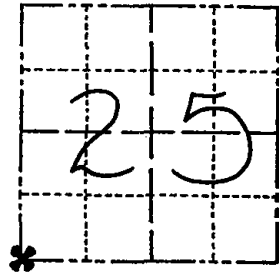


- SET 3/4" x 18" IRON REBAR, 1.50#/FT
- ⊕ FOUND HARRISON MONUMENT
- ⊗ WITNESS POWER POLE
- ┊ VINYL "T" POST

Government Land Corner Certificate

ADAMS County
 TYPE OF MONUMENT: Harrison Monument
 STATE PLANE COORDINATES: N _____
 E _____
 ELEVATION — M.S.L. DATUM: _____
 THETA ANGLE: _____
 FIELD BOOK: 54 (101) PAGE 22 (96)
 DRAWN BY: SCOTT SORENSEN

CORNER NO. 111
 SECTION 25
 TOWN 19
 RANGE 6



LOCATION
 (Indicated by 'X')

BASIS FOR MONUMENT LOCATION

Show info such as: History of corner, with reference to Vol. and pg., dates, surveyor; exact description of monument replaced; if location computed, by taped or EDM traverse; landowner remarks, etc. (Use reverse side if necessary)

Excavated with backhoe. Found 4 x 6 x 9" sandstone right at surface of ground. It appeared to be the bottom of what once was a longer stone. Carefull excavation proved that stone was dug in and that it had not been disturbed otherwise. Lowered stone and set Harrison monument on top. EDM traverse verified location. This matched bricks found at W 1/4 corner as set by County Surveyor Hurly in 1939.

Previous Adams County Highway Commissioner Clarence Holmes recalled seeing a stone here years ago. I had dug here several years ago but was unable to find the stone because of digging too far to the west. An extensive traverse of section 25 and other sections north and south of here indicated the stone to be further east, which it was.

SEAL:



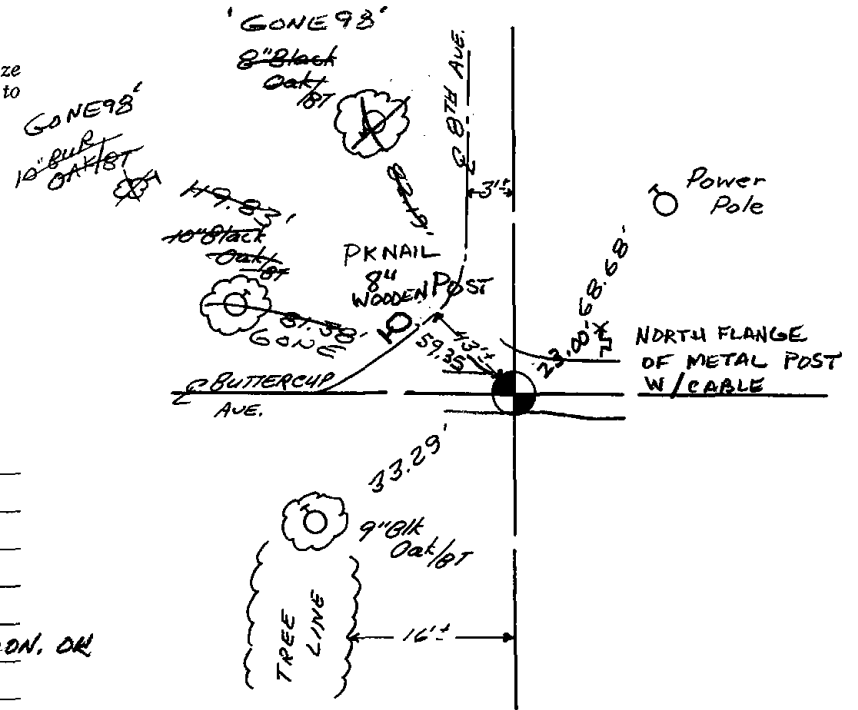
DATA SHOWN HERE ON
 CERTIFIED CORRECT:

Anthony B. Kiedrowski
 Registered Land Surveyor

DATE 1/13/78

TIE SKETCH

Show at least four ties, also fence lines, roads, topo, size and type of witness trees' and if off road - best way to arrive at corner.



MAINTENANCE RECORD

Date	Init.	Remarks
11-29-78	RN-DA	OK
3-10-83	GR-SS	1 NEW TIE
1-8-93	JG-BS	OK
2-23-98	JG	2-GONE, 2-NEW, MON. OK
12-17-07	JG	OK