

25
SECTION

19
TOWN

06
RANGE

ADAMS COUNTY

COUNTY CORNER NO: 112

ROMPORTOL ID: 41906250020

PUBLIC LAND SURVEY MONUMENT RECORD

TYPE OF MONUMENT: HARRISON

ADAMS COUNTY COORDINATES, NAD 83 (2007)

N. 261250.193

E. 554531.302

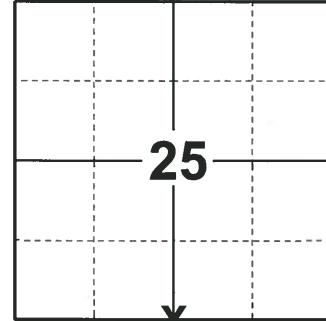
ELEVATION- - - - - DATUM - - - - -

FIELD WORK DATE: 12/18/2018

BASIS FOR MONUMENT LOCATION

1977 - PLS 1103 RAN EDM TRAVERSE AROUND SECTION 25 AND MANY ADJACENT SECTION CORNERS TO DETERMINE SEARCH AREA FOR INVESTIGATION. INVESTIGATION YIELDED NO EVIDENCE OF THE ORIGINAL CORNER OR ANY REMONUMENTATION. COULD FIND NO EVIDENCE OF ANY BEARING TREES. FENCE APPEARS TO HAVE BEEN BUILT WITHOUT BENEFIT OF SURVEY. RELOCATED CORNER BY SINGLE PROPORTIONATE MEASURE ON LINE BETWEEN ADJACENT CORNERS. SET HARRISON MONUMENT.

2018 - PLS 2675 FOUND A HARRISON MONUMENT 4" ABOVE THE GROUND SURFACE AND 3 WITNESS TREES. THE MONUMENT AGREES WITH THE EXISTING WITNESS TREES. ACCEPTED THE HARRISON MONUMENT AS THE CORNER LOCATION. SET 4 NEW TIES AND MEASURED TO THE TIES AND WITNESS TREES.



LOCATION

(INDICATE CORNER BY "X")

SEAL:

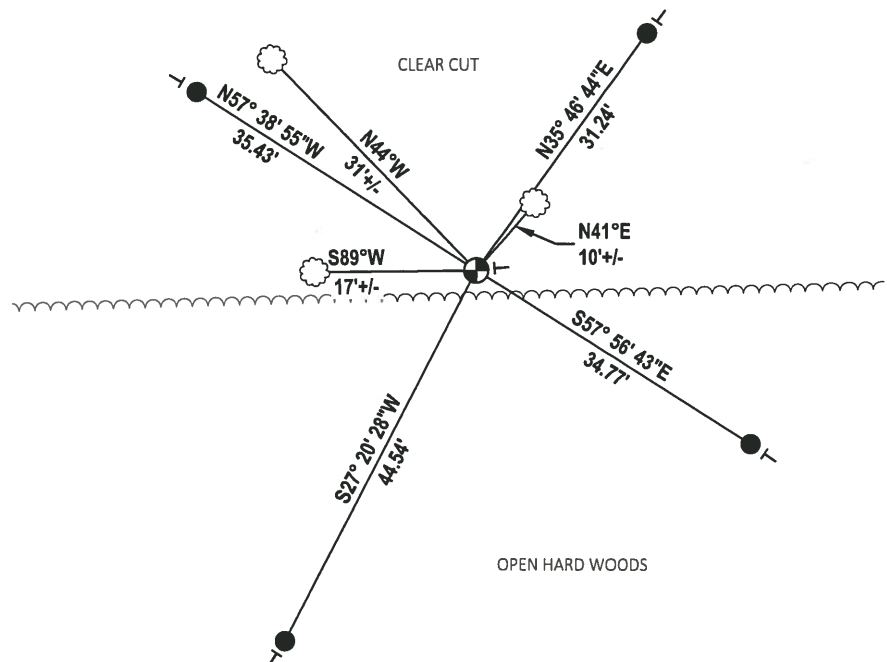
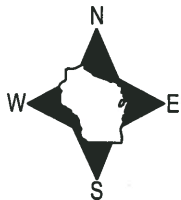


DATA SHOWN HERE ON THIS TIE SHEET IS CORRECT AND COMPLETE TO THE BEST OF MY KNOWLEDGE AND BELIEF.

PROFESSIONAL LAND SURVEYOR

DATE 1-18-19

TIE SKETCH

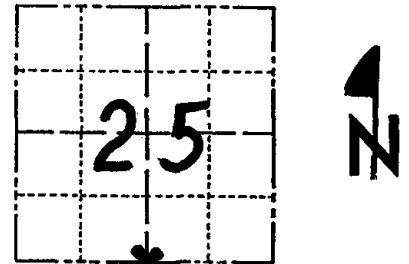


- SET 3/4" x 18" IRON REBAR, 1.50#/FT
- ⊕ FOUND HARRISON MONUMENT
- | VINYL "T" POST
- ☼ WITNESS TREE

Government Land Corner Certificate

ADAMS County
 TYPE OF MONUMENT: HARRISON STD.
 STATE PLANE COORDINATES: N _____
 E _____
 ELEVATION — M.S.L. DATUM: _____
 THETA ANGLE: _____
 FIELD BOOK: 54 PAGE 36
 DRAWN BY: SCOTT SORENSEN

CORNER NO. 112
 SECTION 25
 TOWN 19
 RANGE 6



LOCATION
 (Indicated by 'X')

BASIS FOR MONUMENT LOCATION

Show info such as: History of corner, with reference to Vol. and pg., dates, surveyor; exact description of monument replaced; if location computed, by taped or EDM traverse; landowner remarks, etc. (Use reverse side if necessary)

Ran EDM/T2 traverse around Section 25 and many adjacent section corners to determine search area for investigation.

Investigation yielded no evidence of the original corner or any remonumentation. Could find no evidence of any bearing trees. Fence appears to have been build without benefit of survey.

Relocated corner by single proportionate measure on line between adjacent corners.

Set monument on 9-12-1977.

SEAL:



DATA SHOWN HERE ON
 CERTIFIED CORRECT:

Dale C. Hagen
 Registered Land Surveyor

DATE: December 27, 1977

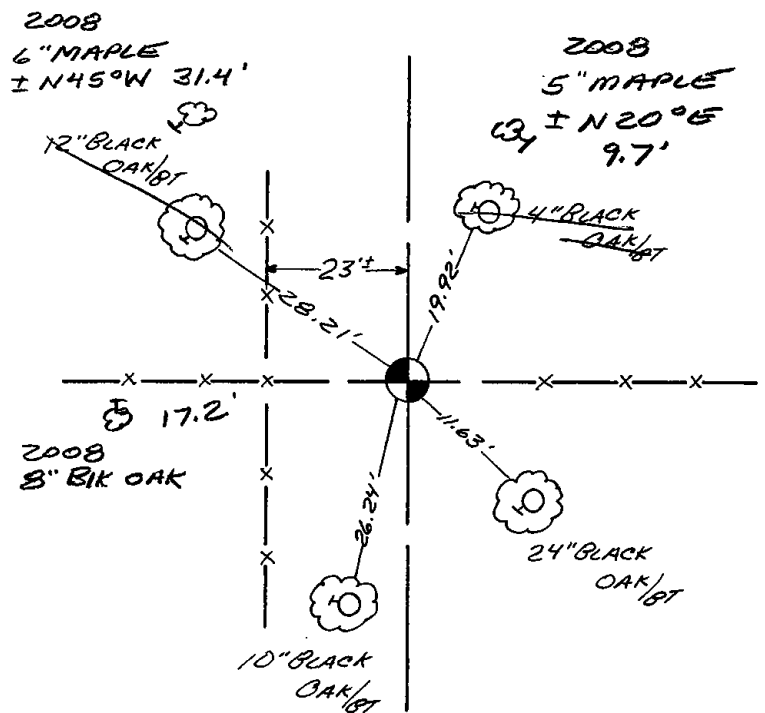
TIE SKETCH

Show at least four ties, also fence lines, roads, topo, size and type of witness trees' and if off road - best way to arrive at corner.

NOTE

Ties in trees to nail in disc.

FENCES NOT VISIBLE



MAINTENANCE RECORD

Date	Init.	Remarks
11-29-78	RN-DA	OK
4-21-83	GR-SS	OK
1-8-93	AG-BS	DK
2-24-98	JB-SS	OK
Nov '08	SS	3 NEW TIES