

PUBLIC LAND SURVEY MONUMENT RECORD

TYPE OF MONUMENT: HARRISON
 ADAMS COUNTY COORDINATES, NAD 83 (2007)

N. 258423.503

E. 525503.289

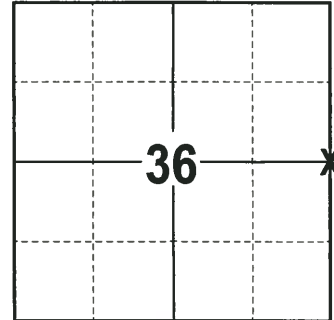
ELEVATION- DATUM

FIELD WORK DATE: 01/16/2018

BASIS FOR MONUMENT LOCATION

1979 - PLS 606 TRAVERSED SECTION 31 USING EDM EQUIPMENT. STATES THE WEST SIDE OF SECTION 31 IS LONGER THAN ORIGINAL GOVERNMENT RECORDS. SEARCHED FOR EVIDENCE, DID NOT FIND STONE, BUT OLD STAKE OR BEARING TREE'S WERE FOUND. LAND OWNER JERRY REPTA STATED HE AND HIS FATHER HAD USED THIS FENCE CORNER LOCATION AND IT HAS BEEN USED AS THE W1/4 CORNER FOR MORE THAN 70 YEARS. ACCEPTED AS THE TRUE CORNER LOCATION AND TIED OUT.

2018 - PLS 2994 FOUND A HARRISON FLUSH WITH THE GROUND SURFACE. DUE TO RECENT LOGGING ALL IF THE WITNESSES HAVE BEEN DESTROYED. ACCEPTED THE HARRISON MONUMENT AS THE BEST EVIDENCE OF THE CORNER LOCATION. SET 4 NEW TIES AND MEASURED TO THE TIES.



LOCATION
 (INDICATE CORNER BY "X")

SEAL:



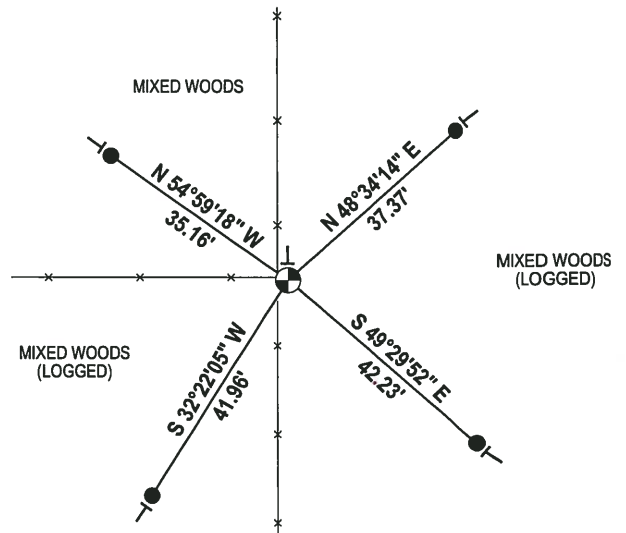
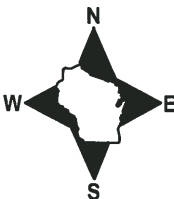
DATA SHOWN HERE ON THIS TIE SHEET IS CORRECT AND COMPLETE TO THE BEST OF MY KNOWLEDGE AND BELIEF.

PROFESSIONAL LAND SURVEYOR

DATE 3-1-18

- TIE SKETCH

NOTE: THE CORNER FALLS 1± EAST OF THE OF THE FENCE CORNER WITH A DND SIGN.



- 3/4" x 18" IRON REBAR SET, 1.50#/FT
- ⊕ HARRISON FOUND
- VINYL "T" POST

ADAMS COUNTY

Survey Monument Record

TYPE OF MONUMENT: 8" Spike HARRISON STD.

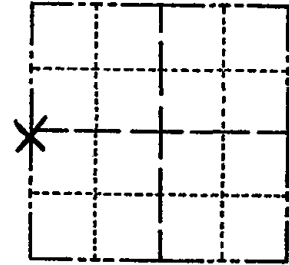
STATE PLANE COORDINATES: N _____ E _____

ELEVATION - M.S.L. DATUM: _____

THETA ANGLE: _____

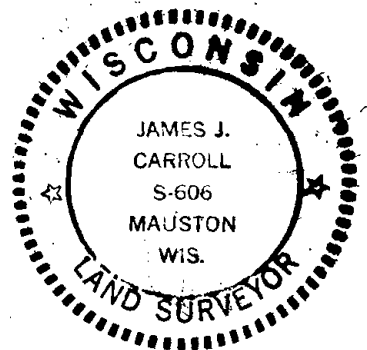
FIELD BOOK: _____ PAGE _____

CORNER NO. W 1/4
SECTION 31
TOWN T19N
RANGE R6E



LOCATION (Indicated by 'X')

SEAL:



BASIS FOR MONUMENT LOCATION

(Use reverse side if necessary)

Show info such as: History of corner, with reference to Vol. and pg, dates, surveyor; exact description of monument replaced; if location computed, by taped or EDM traverse; landowner remarks, etc.

Traversed Section 31 using EDM equipment. West side of Section 31 is longer than original gov't records. Searched for evidence. No stone, old stake or bearing tree's were found. Land owner Jerry Repta stated his father before him and he had used this same fence corner location and has been used as the W 1/2 corner for more than 70 years. Accepted as the true corner location.

- 3-30-83 GR-SS OK
1-GONE, 1-NEW TIE, 1-4-93-JG, BS
1-NEW, MON. OK, 2-24-98-JG
ALL OK, 12-12-02-JG
1 NEW TIE Nov 08 SS

CERTIFIED CORRECT:

James J. Carroll
Registered Land Surveyor
DATE: May 30, 1979

TIE SKETCH

(Show at least four ties)

NOTE: ALL TREES ARE BLACK OAKS.

(MONUMENT IS 1' EAST OF FENCE COR)

