

32
SECTION

19
TOWN

06
RANGE

ADAMS COUNTY

COUNTY CORNER NO: 116

ROMPORTOL ID: 4190632200

PUBLIC LAND SURVEY MONUMENT RECORD

TYPE OF MONUMENT: HARRISON (BROKEN-TOP)

ADAMS COUNTY COORDINATES, NAD 83 (2007)

N. 258576.079

E. 536141.280

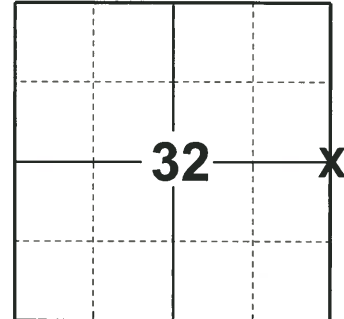
ELEVATION- _____ DATUM _____

FIELD WORK DATE: 12/17/2018

BASIS FOR MONUMENT LOCATION

1972 - PLS 981 FOUND STONE AND 1-1/4" X 30" IRON PIPE. SET HARRISON MONUMENT AND TIED OUT.

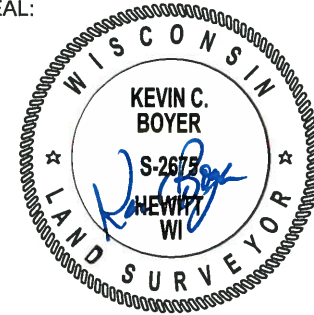
2018 - PLS 2675 FOUND A HARRISON MONUMENT WITH A BROKEN-TOP 4" BELOW THE GROUND SURFACE, 1 TIE AND 2 WITNESSES. THE MONUMENT AGREES WITH THE EXISTING TIE AND WITNESSES. ACCEPTED THE HARRISON MONUMENT WITH A BROKEN-TOP AS THE CORNER LOCATION. SET 4 NEW TIES AND MEASURED TO THE TIES AND WITNESSES.



LOCATION

(INDICATE CORNER BY "X")

SEAL:



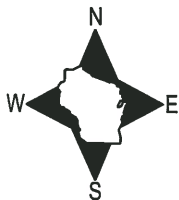
DATA SHOWN HERE ON THIS TIE SHEET IS CORRECT AND COMPLETE TO THE BEST OF MY KNOWLEDGE AND BELIEF.

PROFESSIONAL LAND SURVEYOR

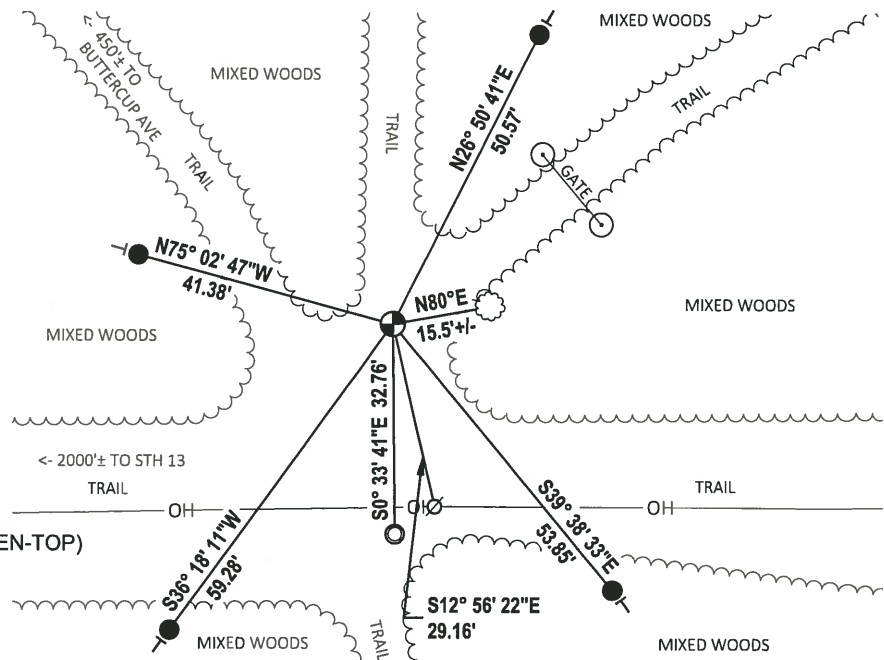
DATE 1-18-19

TIE SKETCH

NOTE: THE CORNER FALLS 29'± NORTH OF THE OVERHEAD LINE.



- SET 3/4" x 18" IRON REBAR, 1.50#/FT
- FOUND 1-1/4" O.D. IRON PIPE
- ⊕ FOUND HARRISON MONUMENT (BROKEN-TOP)
- ∅ WITNESS POWER POLE
- ┆ VINYL "T" POST
- ☼ WITNESS TREE



ADAMS COUNTY

Survey Monument Record

CORNER NO. 6
 SECTION 32
 TOWN 19
 RANGE 6

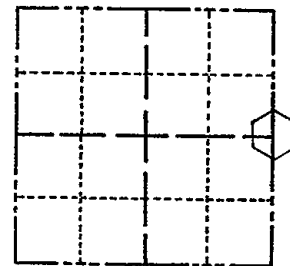
TYPE OF MONUMENT: 30" HARRISON

STATE PLANE COORDINATES: N
E

ELEVATION — M.S.L. DATUM:

THETA ANGLE:

FIELD BOOK: 104 PAGE 38



LOCATION
(Indicated by 'X')

SEAL:

BASIS FOR MONUMENT LOCATION

(Use reverse side if necessary)

Show info such as: History of corner, with reference to Vol. and pg, dates, surveyor; exact description of monument replaced; if location computed, by taped or EDM traverse; landowner remarks, etc.

Found stone and 1 1/4" x 30" iron pipe set monument July 6, 1972

Sam T. Millem R.L.S. S-981

OK 12-1-78 RN-DA

3-30-83 GR-SS 2 NEW TIES

TIES OK, TOP BROKEN OFF MON, BOTTOM OK 8-19-92 CERTIFIED CORRECT: JG

OK, 2-11-98-JG

1-GONE, 4-LEFT, 12-12-02-JG

2-21-08 OK GPR

Registered Land Surveyor

DATE: _____

TIE SKETCH

(Show at least four ties)

THE GREEN ACRES PLAT

