

## PUBLIC LAND SURVEY MONUMENT RECORD

TYPE OF MONUMENT: HARRISON  
ADAMS COUNTY COORDINATES, NAD 83 (2007)

N. 287825.497

E. 564820.042

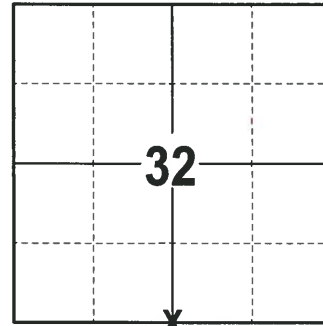
ELEVATION-      DATUM     

FIELD WORK DATE: 02/01/2018

### BASIS FOR MONUMENT LOCATION

1974 - PLS 1103 COULD NOT FIND ANY EVIDENCE OF THE ORIGINAL CORNER OR ANY OF IT'S ACCESSORY MONUMENTS. DID NOT EXCAVATE BECAUSE THE CORNER SEARCH AREA FELL WITHIN A FILL AREA IN A SWAMPY AREA. CALCULATED CORNER EQUIDISTANT AND ON A LINE BETWEEN THE NORTHEAST AND NORTHWEST SECTION CORNERS OF SECTION 5. SET A HARRISON MONUMENT AND TIED OUT.

2018 - PLS 2994 FOUND A HARRISON MONUMENT 8" BELOW THE SURFACE, 1 TIE AND 1 WITNESS. THE MONUMENT AGREES WITH THE EXISTING TIE AND WITNESS. ACCEPTED THE HARRISON MONUMENT AS THE CORNER LOCATION. SET 3 NEW TIES AND MEASURED TO THE TIES AND WITNESS.



**LOCATION**  
(INDICATE CORNER BY "X")

SEAL:



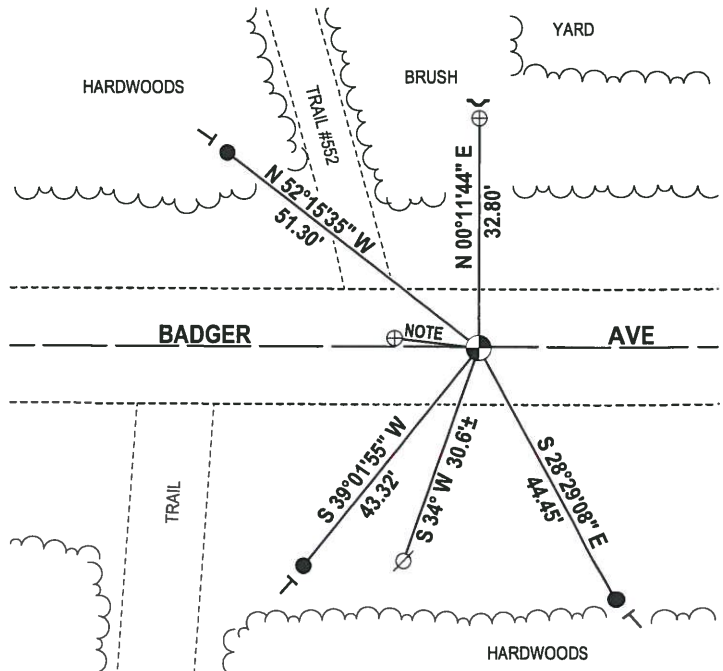
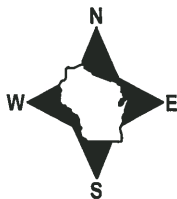
DATA SHOWN HERE ON THIS TIE SHEET IS CORRECT AND COMPLETE TO THE BEST OF MY KNOWLEDGE AND BELIEF.

PROFESSIONAL LAND SURVEYOR

DATE \_\_\_\_\_

### - TIE SKETCH -

NOTE: THE FOUND 1.0" O.D. IRON PIPE IS THE NE CORNER OF TRACT 10 OF ADAMS COUNTY CERTIFIED SURVEY MAP NUMBER 3325 AND IS N 83° W, 17.83' OF THE CORNER LOCATION.



- 3/4" x 18" IRON REBAR SET, 1.50#/FT
- ⊕ 1.0" O.D. IROD PIPE FOUND
- ⊙ HARRISON FOUND
- ⊗ WITNESS POWER POLE
- ✓ STEEL FENCE POST
- └ VINYL "T" POST

**ADAMS COUNTY**

**Survey Monument Record**

TYPE OF MONUMENT: Harrison Monument

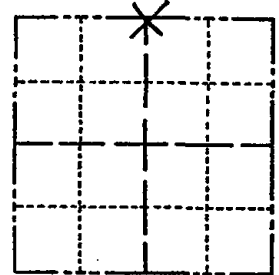
STATE PLANE COORDINATES: N \_\_\_\_\_  
E \_\_\_\_\_

ELEVATION — M.S.L. DATUM: \_\_\_\_\_

THETA ANGLE: \_\_\_\_\_

FIELD BOOK: \_\_\_\_\_ PAGE \_\_\_\_\_

CORNER NO. 463 (4)  
SECTION 5  
TOWN 19  
RANGE 7



LOCATION  
(Indicated by 'X')

SEAL:

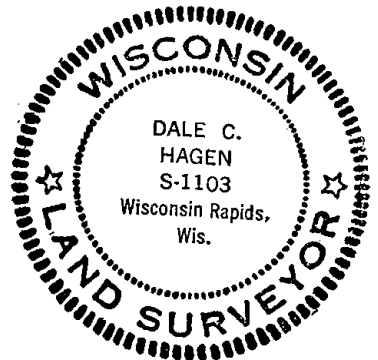
**BASIS FOR MONUMENT LOCATION**

(Use reverse side if necessary)

Show info such as: History of corner, with reference to Vol. and pg, dates, surveyor; exact description of monument replaced; if location computed, by taped or EDM traverse; landowner remarks, etc.

Could find no evidence of original corner or any of its accessory monuments. Did not excavate because corner search area fell within fill area in swampy area.

Set corner equidistant and on line between Northeast and Northwest section corners.



CORNER O.K.	4-26-77	GR-SS
CORNER OK	3-11-82	GR-SS
" "	3-26-87	GR-SS
1 GONE - 1 NEW	12-5-91	K2-J6
COR OK	3-7-97	JG-SS

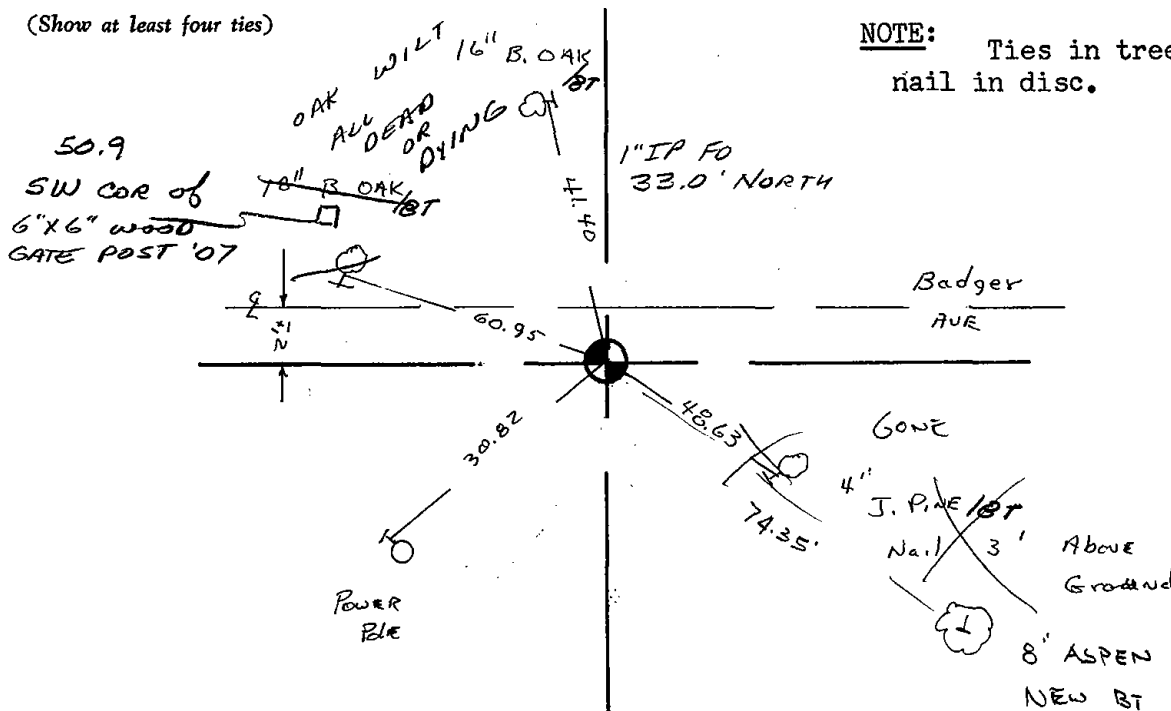
CERTIFIED CORRECT:

Dale C. Hagen  
Registered Land Surveyor

DATE: July 30, 1974

**TIE SKETCH** OK 01-02-02 JG-SS  
03-15-07 SS 2 NEW TIES

(Show at least four ties)



**NOTE:** Ties in trees to nail in disc.



SECRET  
NOFORN  
UNCLASSIFIED

10/10/00

10/10/00

SECRET