

06 SECTION 19 TOWN 07 RANGE

# ADAMS COUNTY

COUNTY CORNER NO: 15  
ROMPORTOL ID: 41907062000

## PUBLIC LAND SURVEY MONUMENT RECORD

TYPE OF MONUMENT: HARRISON  
ADAMS COUNTY COORDINATES, NAD 83 (1907)

N. 285098.304  
E. 562178.034

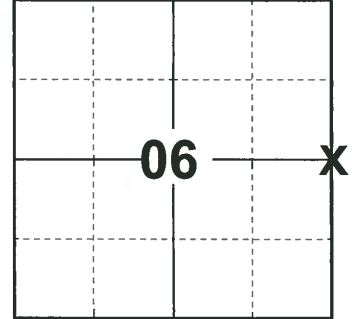
ELEVATION- - - - - DATUM - - - - -

FIELD WORK DATE: 05/01/2019

### BASIS FOR MONUMENT LOCATION

1971 - PLS 981 FOUND IRON PIPE AND SET MONUMENT.

2019 - PLS 2675 FOUND HARRISON FLUSH WITH THE ROAD SURFACE AND 1 WITNESS. THE MONUMENT AGREES WITH THE WITNESS. ACCEPTED THE HARRISON AS THE CORNER LOCATION. SET 4 NEW TIES AND MEASURED TO THE EXISTING WITNESS.



LOCATION  
(INDICATE CORNER BY "X")

SEAL:



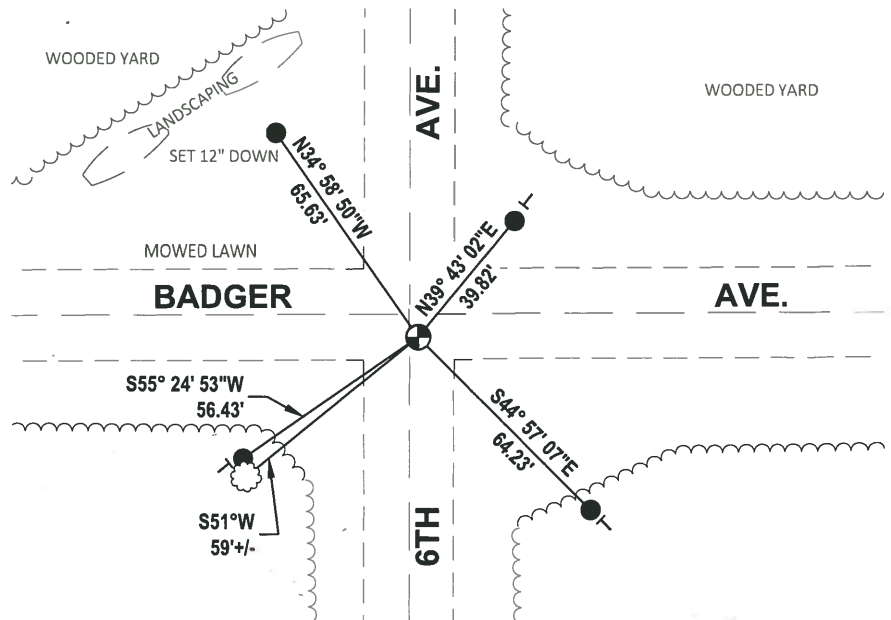
DATA SHOWN HERE ON THIS TIE SHEET IS CORRECT AND COMPLETE TO THE BEST OF MY KNOWLEDGE AND BELIEF.

PROFESSIONAL LAND SURVEYOR

DATE 6/4/19

### TIE SKETCH

NOTE: THE CORNER LANDS ±3' EAST OF 6TH AVE. CENTERLINE AND ±6' SOUTH OF BADGER AVE. CENTERLINE.



- SET 3/4" x 18" IRON REBAR, 1.50#/FT
- ⊕ FOUND HARRISON MONUMENT
- VINYL "T" POST
- ☼ WITNESS TREE

# ADAMS COUNTY

## Survey Monument Record

TYPE OF MONUMENT: 30" HARRISON

STATE PLANE COORDINATES: N \_\_\_\_\_

E \_\_\_\_\_

ELEVATION — M.S.L. DATUM: \_\_\_\_\_

THETA ANGLE: \_\_\_\_\_

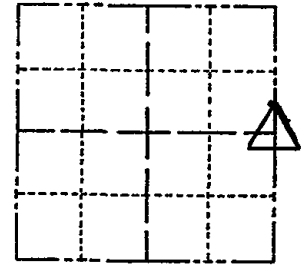
FIELD BOOK: 104 PAGE 83

CORNER NO. 52

SECTION 6

TOWN 19

RANGE 7



LOCATION  
(Indicated by 'X')

SEAL:

### BASIS FOR MONUMENT LOCATION

(Use reverse side if necessary)

Show info such as: History of corner, with reference to Vol. and pg, dates, surveyor; exact description of monument replaced; if location computed, by taped or EDM traverse; landowner remarks, etc.

Found iron pipe and set monument

October 15, 1971

Sam T. Mullen R.L.S. S-981

1-NEW TIE, 9-19-06 MC-EN  
 CORNER O.K. 4-26-77 GR-SS  
 CORNER OK 3-17-82 GR-SS  
 " " 3-26-87 GR-SS  
 " " 12-5-91  
 " " 3-7-97 JG-SS

CERTIFIED CORRECT:

Registered Land Surveyor

DATE: \_\_\_\_\_

TIE SKETCH OK 01-02-02 JG-JS

(Show at least four ties)

