

05 SECTION 19 TOWN 07 RANGE

# ADAMS COUNTY

COUNTY CORNER NO: 16  
 ROMPORTOL ID: 41907052000

## PUBLIC LAND SURVEY MONUMENT RECORD

TYPE OF MONUMENT: HARRISON  
 ADAMS COUNTY COORDINATES, NAD 83 (1907)

N. 285139.795  
 E. 567458.853

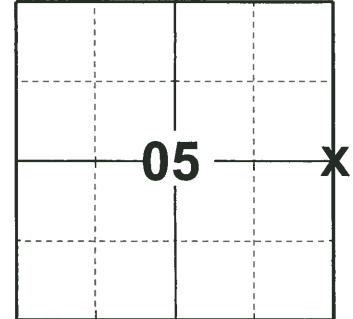
ELEVATION- - - - DATUM - - - -

FIELD WORK DATE: 04/29/2019

### BASIS FOR MONUMENT LOCATION

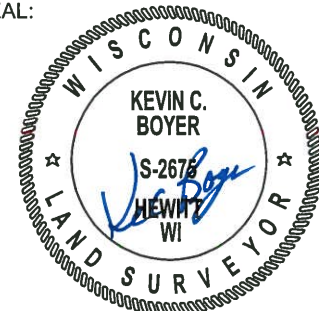
1974 - PLS 1103 COULD FIND NO EVIDENCE OF THE ORIGINAL CORNER OR ANY OF ITS ACCESSORY MONUMENTS. DID NOT EXCAVATE BECAUSE CORNER SEARCH AREA FELL WITHIN FILL AREA OF ROAD INTERSECTION. CENTERLINE-CENTERLINE INTERSECTION EXCAVATED WITH BACKHOE FOUND NOTHING. SET CORNER ON LINE BETWEEN NORTHEAST AND SOUTHEAST SECTION CORNERS AND ON THE EXTENSION OF THE EAST-WEST QUARTER LINE AS DEFINED BY AN UNRECORDED PLAT BY PERRY-CARRINGTON IN THE NORTHWEST QUARTER OF THIS SECTION.

2019 - PLS 2675 FOUND HARRISON 8" BELOW THE ROAD SURFACE, 1 TIE, AND 1 WITNESS. THE MONUMENT AGREES WITH BOTH THE TIE AND WITNESS. ACCEPTED THE HARRISON AS THE CORNER LOCATION. SET 3 NEW TIES AND MEASURED TO A FOUND PROPERTY IRON AND THE EXISTING TIE AND WITNESS.



**LOCATION**  
 (INDICATE CORNER BY "X")

SEAL:



DATA SHOWN HERE ON THIS TIE SHEET IS CORRECT AND COMPLETE TO THE BEST OF MY KNOWLEDGE AND BELIEF.

PROFESSIONAL LAND SURVEYOR

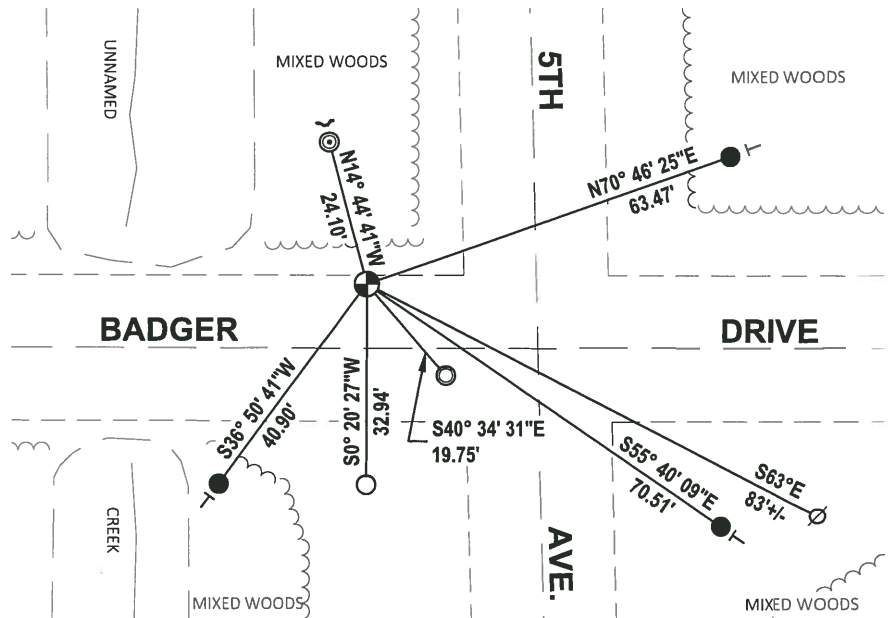
DATE 6/4/19

### TIE SKETCH

NOTE: THE CORNER LANDS ±10' NORTH OF BADGER DRIVE CENTERLINE AND ±28' WEST OF 5TH AVE. CENTERLINE.



- SET 3/4" x 18" IRON REBAR, 1.50#/FT
- FOUND 3/4" IRON ROD
- ⊙ FOUND 1-1/4" O.D. IRON PIPE
- ⊙ FOUND 2-3/8" O.D. IRON PIPE
- ⊕ FOUND HARRISON MONUMENT
- ⊘ WITNESS POWER POLE
- ┌ STEEL FENCE POST
- VINYL "T" POST

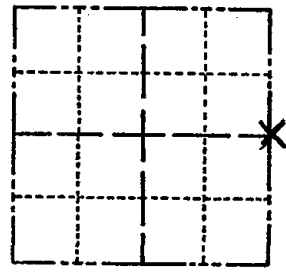


ADAMS COUNTY

Survey Monument Record

TYPE OF MONUMENT: Harrison Monument
STATE PLANE COORDINATES: N
E
ELEVATION --- M.S.L. DATUM:
THETA ANGLE:
FIELD BOOK: PAGE

CORNER NO. 465
SECTION 5
TOWN 19
RANGE 7



BASIS FOR MONUMENT LOCATION

(Use reverse side if necessary)

Show info such as: History of corner, with reference to Vol. and pg, dates, surveyor; exact description of monument replaced; if location computed, by taped or EDM traverse; landowner remarks, etc.

Could find no evidence of the original corner or any of its accessory monuments. Did not excavate because corner search area fell within fill area of road intersection. E-E intersection excavated/Backhoe - round nothing. Set corner on line between Northeast and Southeast section corners and on the extension of the East-West Quarter line as defined by an unrecorded plat by Perry-Carrington in the Northwest Quarter of this section.

LOCATION (Indicated by 'X')
SEAL:

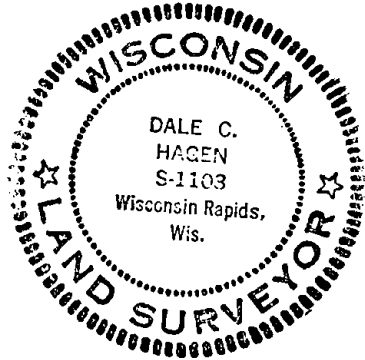


Table with 4 columns: CORNER, D.K., Date, and Surveyor. Rows include: CORNER D.K. 4-26-77 GR-SS; ' ' 3-17-82 GR-SS; ' ' 3-26-87 GR-SS; ' ' 12-5-91 KZ-JG; ' ' 3-7-97 JG-SS

CERTIFIED CORRECT:

Dale C. Hagen
Registered Land Surveyor
DATE: July 30, 1974

2-NEW TIES, 2-NEW DISTANCES, COR OK, 1-02-02-JG-SS
" 3-15-07 SS

TIE SKETCH

(Show at least four ties)

NOTE:

Ties in trees to Nail in disc.

