

**ADAMS COUNTY**

**Survey Monument Record**

TYPE OF MONUMENT: Standard Harrison

STATE PLANE COORDINATES: N \_\_\_\_\_  
E \_\_\_\_\_

ELEVATION — M.S.L. DATUM: \_\_\_\_\_

THETA ANGLE: \_\_\_\_\_

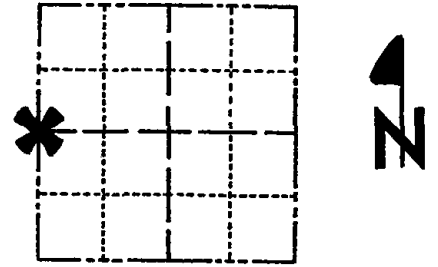
FIELD BOOK: \_\_\_\_\_ PAGE \_\_\_\_\_

CORNER NO. 825 <sup>(17)</sup>

SECTION 3

TOWN 19

RANGE 7



LOCATION  
(Indicated by 'X')

SEAL:

**BASIS FOR MONUMENT LOCATION**

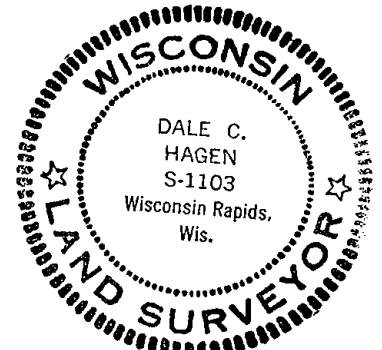
(Use reverse side if necessary)

Show info such as: History of corner, with reference to Vol. and pg, dates, surveyor; exact description of monument replaced; if location computed, by taped or EDM traverse; landowner remarks, etc.

Ran EDM/transit traverse around Section 3 and the adjacent Sections in the Town of Colburn.

Could find no evidence of the original corner or any remonumentation.

Relocated corner proportionate to original government distance and on line between the adjacent section corners.



CERTIFIED CORRECT:

*Dale C. Hagen*  
Registered Land Surveyor  
DATE: December 2, 1975

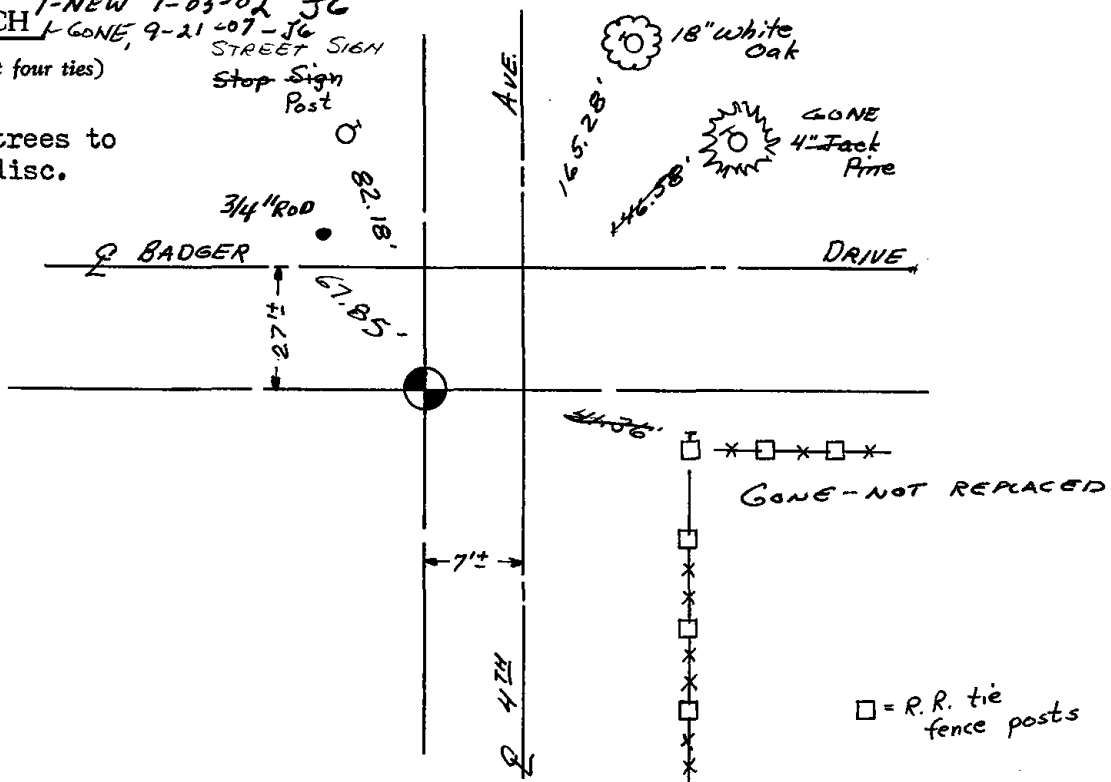
CORNER	O.K.	4-26-77	GR-SS
"	"	3-17-82	GR-SS
"	"	3-26-87	GR-SS
"	"	12-5-91	KZ-JG
"	"	3-18-97	JG-SS

**TIE SKETCH** 1-NEW 1-03-02 JG  
1-GONE, 9-21-07-JG  
STREET SIGN  
Stop Sign Post

(Show at least four ties)

**NOTE:**

Ties in trees to nail in disc.



04 SECTION 19 TOWN 07 RANGE

# ADAMS COUNTY

COUNTY CORNER NO: 17  
ROMPORTOL ID: 41907042000

## PUBLIC LAND SURVEY MONUMENT RECORD

TYPE OF MONUMENT: HARRISON (BROKEN-TOP)  
ADAMS COUNTY COORDINATES, NAD 83 (1907)

N. 285138.344  
E. 572728.344

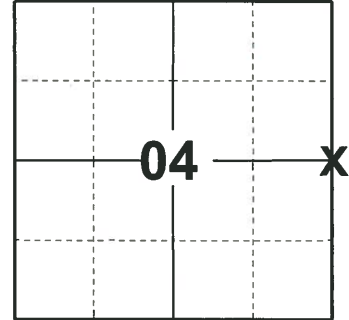
ELEVATION- - - - DATUM - - - -

FIELD WORK DATE: 04/29/2019

### BASIS FOR MONUMENT LOCATION

1975 - PLS 1103 RAN EDM/TRANSIT TRAVERSE AROUND SECTION 3 AND THE ADJACENT SECTIONS IN THE TOWN OF COLBURN. COULD FIND NO EVIDENCE OF THE ORIGINAL CORNER OR ANY REMONUMENTATION. RELOCATED CORNER PROPORTIONATE TO ORIGINAL GOVERNMENT DISTANCE AND ON LINE BETWEEN THE ADJACENT SECTION CORNERS.

2019 - PLS 2675 FOUND HARRISON (BROKEN-TOP) 4" BELOW THE ROAD SURFACE AND 1 TIE. THE MONUMENT AGREES WITH THE EXISTING TIE. ACCEPTED THE HARRISON (BROKEN-TOP) AS THE CORNER LOCATION. SET 3 NEW TIES AND MEASURED TO THE EXISTING TIE.



LOCATION  
(INDICATE CORNER BY "X")

SEAL:



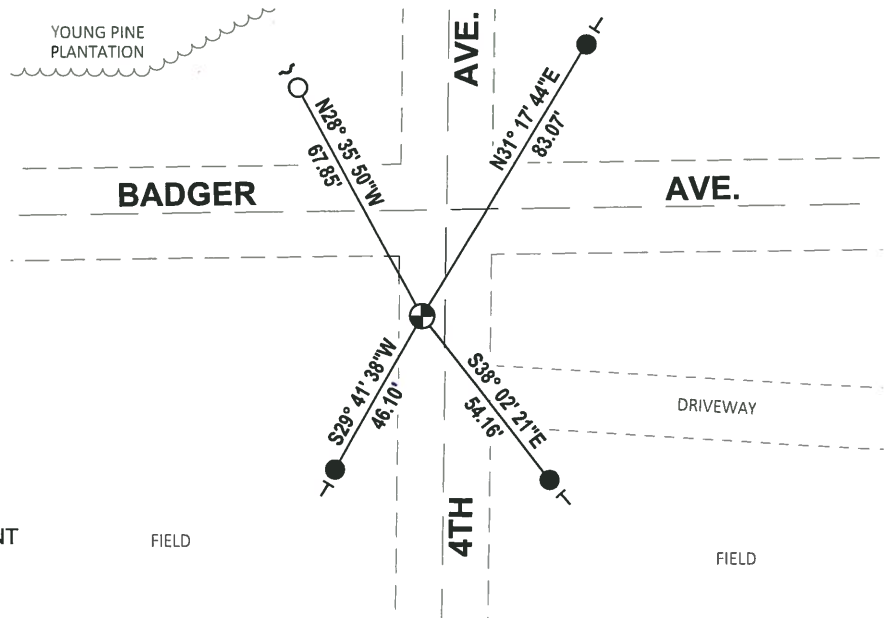
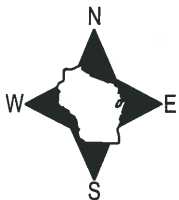
DATA SHOWN HERE ON THIS TIE SHEET IS CORRECT AND COMPLETE TO THE BEST OF MY KNOWLEDGE AND BELIEF.

PROFESSIONAL LAND SURVEYOR

DATE 6/4/19

### - TIE SKETCH

NOTE: THE CORNER LANDS ±28' SOUTH OF BADGER AVE. CENTERLINE AND ±6' WEST OF 4TH AVE. CENTERLINE.



- SET 3/4" x 18" IRON REBAR, 1.50#/FT
- FOUND 3/4" IRON ROD
- ⊕ FOUND HARRISON (BROKEN-TOP) MONUMENT
- ↗ STEEL FENCE POST
- ↖ VINYL "T" POST