

03 SECTION 19 TOWN 07 RANGE

ADAMS COUNTY

COUNTY CORNER NO: 18
 ROMPORTOL ID: 41907032000

PUBLIC LAND SURVEY MONUMENT RECORD

TYPE OF MONUMENT: HARRISON
 ADAMS COUNTY COORDINATES, NAD 83 (1907)

N. 285159.790
 E. 577970.664

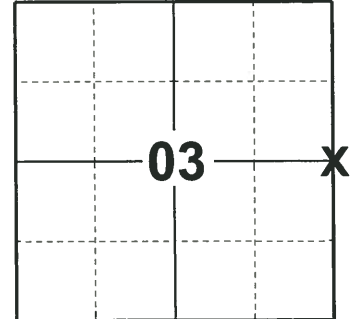
ELEVATION- - - - - DATUM - - - - -

FIELD WORK DATE: 04/30/2019

BASIS FOR MONUMENT LOCATION

1975 - PLS 1103 RAN EDM/TRANSIT TRAVERSE AROUND SECTIONS 1, 2, 3, 10, 11, 12, 13, 14, 15, AND 24 TO DETERMINE SEARCH AREAS. CORNER AS USED BY L.L.LAMPERT FOR A SURVEY IN SECTION 2 WAS FOUND WITHIN SEARCH AREA AND REMONUMENTED.

2019 - PLS 2675 FOUND HARRISON 4" BELOW THE ROAD SURFACE, 2 TIES, AND 2 WITNESSES. THE MONUMENT AGREES WITH BOTH TIES AND WITNESSES. ACCEPTED THE HARRISON AS THE CORNER LOCATION. SET 3 NEW TIES AND MEASURED TO THE EXISTING TIES AND WITNESSES.



LOCATION
 (INDICATE CORNER BY "X")

SEAL:



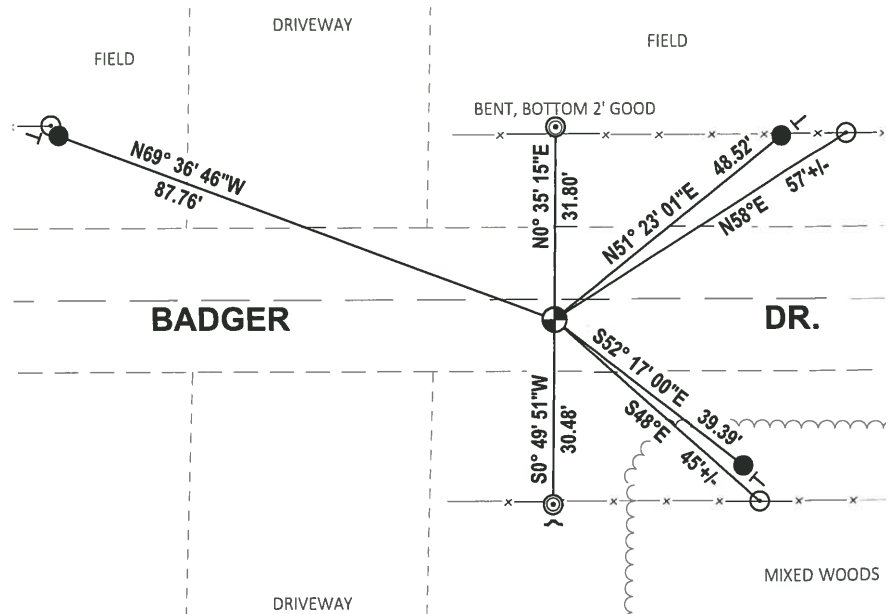
DATA SHOWN HERE ON THIS TIE SHEET IS CORRECT AND COMPLETE TO THE BEST OF MY KNOWLEDGE AND BELIEF.

PROFESSIONAL LAND SURVEYOR

DATE 6/4/19

- TIE SKETCH -

NOTE: THE CORNER LANDS 3'± SOUTH OF BADGER DRIVE CENTERLINE.



- SET 3/4" x 18" IRON REBAR, 1.50#/FT
- ◎ FOUND 2-3/8" O.D. IRON PIPE
- ⊕ FOUND HARRISON MONUMENT
- ~ STEEL FENCE POST
- VINYL "T" POST
- ◎ FENCE POST WITH NAIL

ADAMS COUNTY

Survey Monument Record

TYPE OF MONUMENT: Standard Harrison

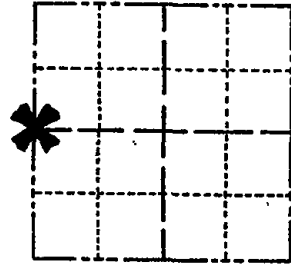
STATE PLANE COORDINATES: N _____
E _____

ELEVATION — M.S.L. DATUM: _____

THETA ANGLE: _____

FIELD BOOK: _____ PAGE _____

CORNER NO. 824
SECTION 2
TOWN 19
RANGE 7



LOCATION
(Indicated by 'X')

SEAL:

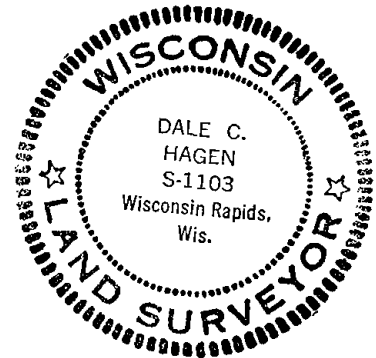
BASIS FOR MONUMENT LOCATION

(Use reverse side if necessary)

Show info such as: History of corner, with reference to Vol. and pg. dates, surveyor; exact description of monument replaced; if location computed, by taped or EDM traverse; landowner remarks, etc.

Ran EDM/transit traverse around Sections 1, 2, 3, 10, 11, 12, 13, 14, 15, and 24 to determine search areas.

Corner as used by L.L. Lampert for a survey in Section 2 was found within search area and remonumented.



CORNER	O.K.	4-26-77	GR-SS
"	"	3-17-82	GR-SS
"	"	3-26-87	GR-SS
"	"	1-8-92	KZ-JG
"	"	3-18-97	JG-SS

CERTIFIED CORRECT:

Dale C. Hagen
Registered Land Surveyor

DATE: December 8, 1975

TIE SKETCH DK 1-03-02 JG
OK, 9-21-07-JG
(Show at least four ties)

NOTE:
Ties in trees to anil in disc.

