

01 SECTION 19 TOWN 06 RANGE

ADAMS COUNTY

COUNTY CORNER NO: 33

ROMPORTOL ID: 41906010000

PUBLIC LAND SURVEY MONUMENT RECORD

TYPE OF MONUMENT: HARRISON
 ADAMS COUNTY COORDINATES, NAD 83 (2007)

N. 282423.771

E. 557209.985

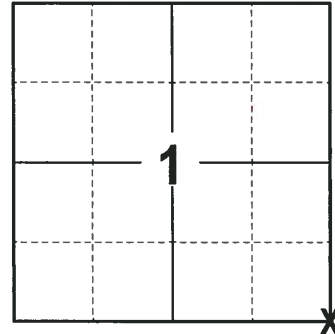
ELEVATION- DATUM

FIELD WORK DATE: 01/29/2018

BASIS FOR MONUMENT LOCATION

2013 - PLS 1478 RE-DRAFTED PRIOR TIE SHEET BY ANTHONY B. KIEDROWSKI FROM 1972. KIEDROWSKI FOUND AN IRON PIPE AT THE CORNER LOCATION. THE MONUMENTED POINT WAS SET BY A.B.K. IN 1965. THE LOCATION WAS DETERMINED BY CALLS FROM THE ORIGINAL GOVERNMENT NOTES WITH RESPECT TO THE PECULIARITIES OF THE CREEK. SET HARRISON IN THE IRON PIPE LOCATION AND TIED OUT.

2018 - PLS 2994 FOUND A HARRISON MONUMENT 10" ABOVE THE GROUND SURFACE AND 2 WITNESS TREES. THE MONUMENT AGREES WITH THE EXISTING WITNESS TREES. ACCEPTED THE HARRISON MONUMENT AS THE CORNER LOCATION. SET 4 NEW TIES AND MEASURED TO THE TIES AND WITNESS TREES.



LOCATION
 (INDICATE CORNER BY "X")

SEAL:



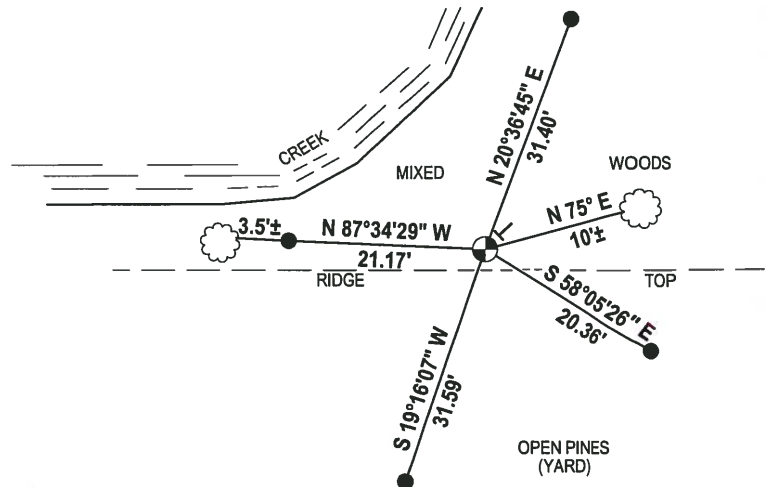
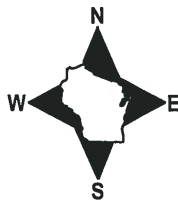
DATA SHOWN HERE ON THIS TIE SHEET IS CORRECT AND COMPLETE TO THE BEST OF MY KNOWLEDGE AND BELIEF.

PROFESSIONAL LAND SURVEYOR

DATE 3-1-18

- TIE SKETCH -

NOTE: THE CORNER FALLS 200± NORTH OF THE CENTERLINE OF BEAVER AVE.



- 3/4" x 18" IRON REBAR SET, 1.50#/FT
- ⊙ HARRISON FOUND
- VINYL "T" POST
- ☁ WITNESS TREE FOUND

