

06 SECTION 19 TOWN 07 RANGE

ADAMS COUNTY

COUNTY CORNER NO: 23
ROMPORTOL ID: 4190706000

PUBLIC LAND SURVEY MONUMENT RECORD

TYPE OF MONUMENT: HARRISON
ADAMS COUNTY COORDINATES, NAD 83 (1907)

N. 282458.572
E. 562190.411

ELEVATION- - - - - DATUM - - - - -

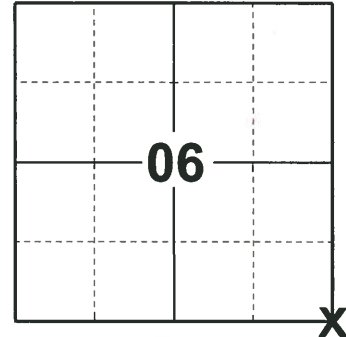
FIELD WORK DATE: 05/01/2019

BASIS FOR MONUMENT LOCATION

1965 - PLS 878 IRON PIPE SET BY A.B.K IN 1965 FROM DATA GATHERED FROM A TRAVERSE OF SECTION 6.

1973 - PLS 878 FOUND 1-1/4" IRON PIPE AND SET MONUMENT.

2019 - PLS 2675 FOUND HARRISON FLUSH WITH THE ROAD SURFACE AND 1 WITNESS. THE MONUMENT AGREES WITH THE FOUND WITNESS. ACCEPTED THE HARRISON AS THE CORNER LOCATION. SET 4 NEW TIES AND MEASURED TO THE EXISTING WITNESS.



LOCATION
(INDICATE CORNER BY "X")

SEAL:



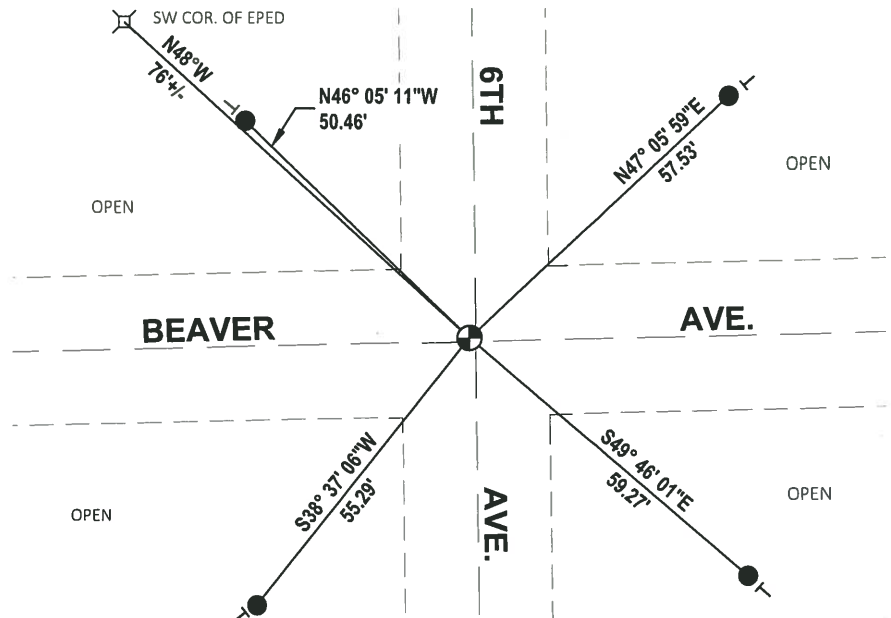
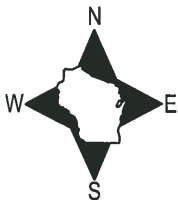
DATA SHOWN HERE ON THIS TIE SHEET IS CORRECT AND COMPLETE TO THE BEST OF MY KNOWLEDGE AND BELIEF.

PROFESSIONAL LAND SURVEYOR

DATE 6/4/19

TIE SKETCH

NOTE: THE CORNER LANDS ±1' NORTH OF BEAVER AVE. CENTERLINE AND ±1' WEST OF 6TH AVE. CENTERLINE.



- SET 3/4" x 18" IRON REBAR, 1.50#/FT
- ⊕ FOUND HARRISON MONUMENT
- └ VINYL "T" POST

ADAMS COUNTY

CORNER NO. 209

Survey Monument Record

SECTION 6

TYPE OF MONUMENT: 30" HARRISON

TOWN 19

STATE PLANE COORDINATES: N _____

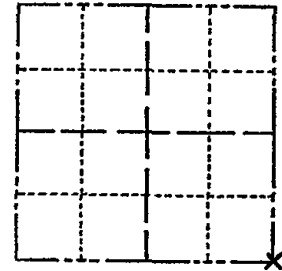
RANGE 7

E _____

ELEVATION — M.S.L. DATUM: _____

THETA ANGLE: _____

FIELD BOOK: 107 PAGE 16



LOCATION (Indicated by 'X')

SEAL:



BASIS FOR MONUMENT LOCATION

(Use reverse side if necessary)

Show info such as: History of corner, with reference to Vol. and pg, dates, surveyor; exact description of monument replaced; if location computed, by taped or EDM traverse; landowner remarks, etc.

Found $1\frac{1}{4}$ " iron pipe and set monument

October 13, 1972

Anthony B. Kiedrowski R.L.S. 878

Iron pipe set by A.B.K. in 1965 from data gathered from a traverse of section 6.

CORNER	O.K.	4-26-77	GR-23
"	"	3-18-82	GR-55
"	"	3-26-87	GR-55
3 GONE	3 NEW	12-5-91	KZ-JG
COR OIL		3-7-97	JG-SS

CERTIFIED CORRECT:

Anthony B. Kiedrowski
Registered Land Surveyor

DATE: 1-30-72

TIE SKETCH OK 1-02-02 JG-JS
OK, 9-21-87-JG

(Show at least four ties)

