

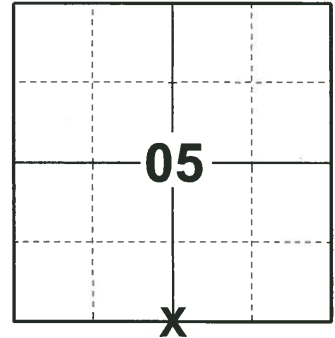
05 SECTION 19 TOWN 07 RANGE

ADAMS COUNTY

COUNTY CORNER NO: 24
ROMPORTOL ID: 41907050020

PUBLIC LAND SURVEY MONUMENT RECORD

TYPE OF MONUMENT: HARRISON
ADAMS COUNTY COORDINATES, NAD 83 (1907)
N. 282478.973
E. 564815.621
ELEVATION- _____ DATUM _____
FIELD WORK DATE: 05/01/2019



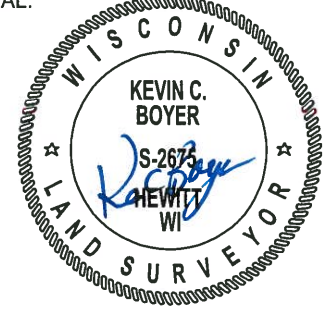
LOCATION
(INDICATE CORNER BY "X")

BASIS FOR MONUMENT LOCATION

1974 - PLS 878 SET ON A STRAIGHT LINE EQUIDISTANT BETWEEN SECTION CORNERS. DID NOT DIG FOR A CORNER HERE BECAUSE AREA FALLS IN A ROAD CUT.

2019 - PLS 2675 FOUND HARRISON 6" BELOW THE ROAD SURFACE AND 1 TIE. THE MONUMENT AGREES WITH THE EXISTING TIE. ACCEPTED THE HARRISON AS THE CORNER LOCATION. SET 3 NEW TIES AND MEASURED TO THE EXISTING TIE.

SEAL:



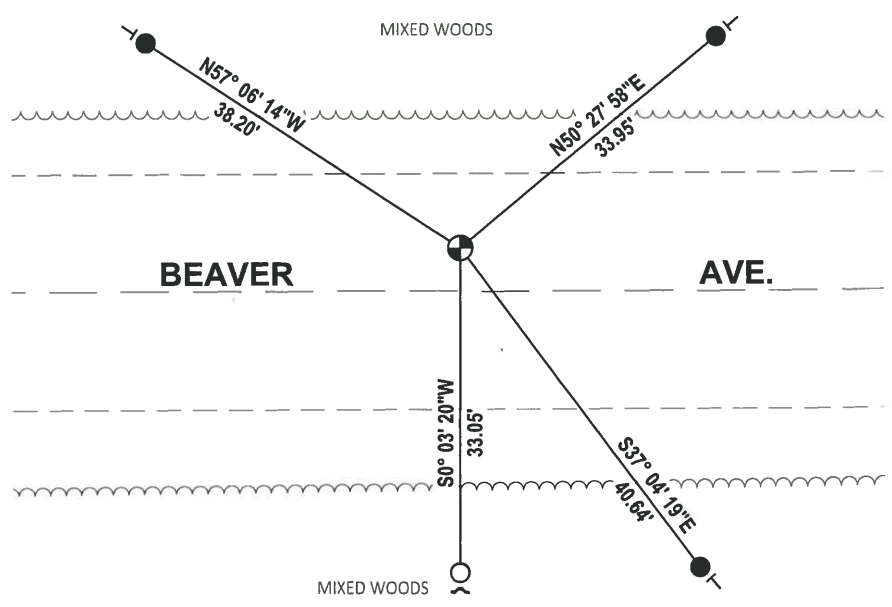
DATA SHOWN HERE ON THIS TIE SHEET IS CORRECT AND COMPLETE TO THE BEST OF MY KNOWLEDGE AND BELIEF.

PROFESSIONAL LAND SURVEYOR

DATE 6/4/19

TIE SKETCH

NOTE: THE CORNER LANDS ±5' NORTH OF BEAVER AVE. CENTERLINE.



- SET 3/4" x 18" IRON REBAR, 1.50#/FT
- FOUND 3/4" IRON ROD
- ⊕ FOUND HARRISON MONUMENT
- ↗ STEEL FENCE POST
- ┌ VINYL "T" POST

ADAMS COUNTY

Survey Monument Record

CORNER NO. 410
 SECTION 8
 TOWN 19
 RANGE 7

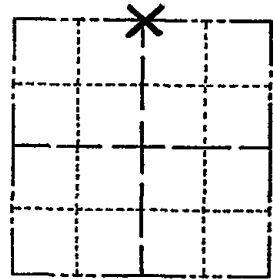
TYPE OF MONUMENT: Harrison Standard

STATE PLANE COORDINATES: N _____
E _____

ELEVATION — M.S.L. DATUM: _____

THETA ANGLE: _____

FIELD BOOK: _____ PAGE _____



LOCATION
(Indicated by 'X')

SEAL:



BASIS FOR MONUMENT LOCATION

(Use reverse side if necessary)

Show info such as: History of corner, with reference to Vol. and pg, dates, surveyor; exact description of monument replaced; if location computed, by taped or EDM traverse; landowner remarks, etc.

Set on a straight line equidistant
 between section corners.
 Did not dig for a corner here
 because area falls in a road cut.

CORNER O.K. 4-26-77 GR-SS.
 " " 3-18-82 GR-SS
 2 NEW TIES 3-26-87 GR-SS
 12-5-91 KZ-JG OK.
 1 GONE - 1 NEW 3-7-97 JG-SS
 1-NEW 1-03-02 JG
 OK, 9-21-07-JG

CERTIFIED CORRECT:

Anthony B. Kiedrowski
 Registered Land Surveyor
 DATE: 6/6/74

TIE SKETCH

(Show at least four ties)

