

ADAMS COUNTY

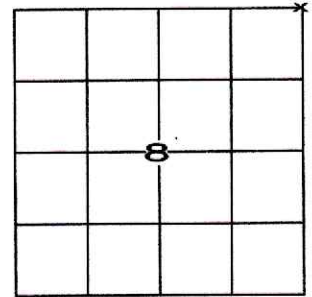
PUBLIC LAND SURVEY MONUMENT RECORD

Type of Monument 3/4"x24" Iron rod

Adams County Coordinates NAD 83 (2011)

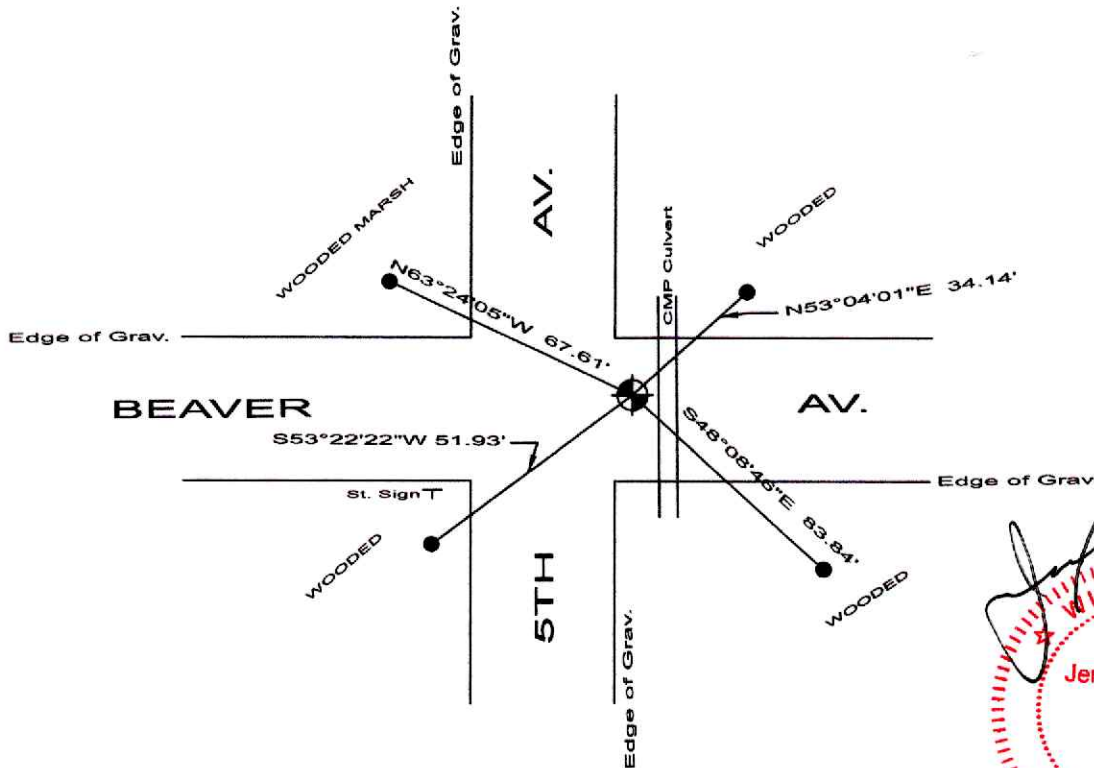
Northing 282499.302

Easting 567440.872



Corner History and Basis for Location

- 1974 - PLS 878 found no evidence of previous monumentation after excavation. Set Harrison monument after traversing entire section.
- 2019 - PLS 2675 found Harrison monument with broken top 6" below surface of road. Accepted Harrison and set 4 new ties.
- 2023 - PLS 1739 found 4 existing ties but no evidence of Harrison monument. A recent culvert had been installed close to the monument location. After fixing location from ties and excavating to a depth of 3' and finding no monument, set a 3/4"x24" rebar from ties, 8" below surface of gravel road.



[Handwritten Signature]

WISCONSIN
 Jerol M. Smart
 S-1739
 Montello
 WI
 LAND SURVEYOR
 JUNE 20, 2023

- Set 3/4"x24" iron rod 8" below surface
- Found 3/4" iron rod & Carsonite post

I, Jerol M. Smart, P.L.S., Adams County Surveyor, do hereby certify that the information shown hereon is correct and that I have fully complied with Wisconsin Statutes and Admin. code to the best of my knowledge and belief.

05 SECTION 19 TOWN 07 RANGE

ADAMS COUNTY

COUNTY CORNER NO: 25
 ROMPORTOL ID: 41907050000

PUBLIC LAND SURVEY MONUMENT RECORD

TYPE OF MONUMENT: HARRISON (BROKEN-TOP)
 ADAMS COUNTY COORDINATES, NAD 83 (1907)

N. 282499.273

E. 567440.784

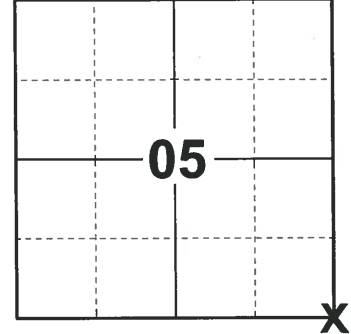
ELEVATION- _____ DATUM _____

FIELD WORK DATE: 04/29/2019

BASIS FOR MONUMENT LOCATION

1974 - PLS 878 EXCAVATED AREA WITH BACKHOE-FOUND NOTHING. LOCATION DETERMINED BY ANALYZING TRAVERSE OF ENTIRE SECTION.

2019 - PLS 2675 FOUND HARRISON (BROKEN-TOP) 6" BELOW THE ROAD SURFACE AND 3 WITNESSES. THE MONUMENT AGREES WITH ALL 3 WITNESSES. ACCEPTED THE HARRISON (BROKEN-TOP) AS THE CORNER LOCATION. SET 4 NEW TIES AND MEASURED TO THE EXISTING WITNESSES.



LOCATION

(INDICATE CORNER BY "X")

SEAL:



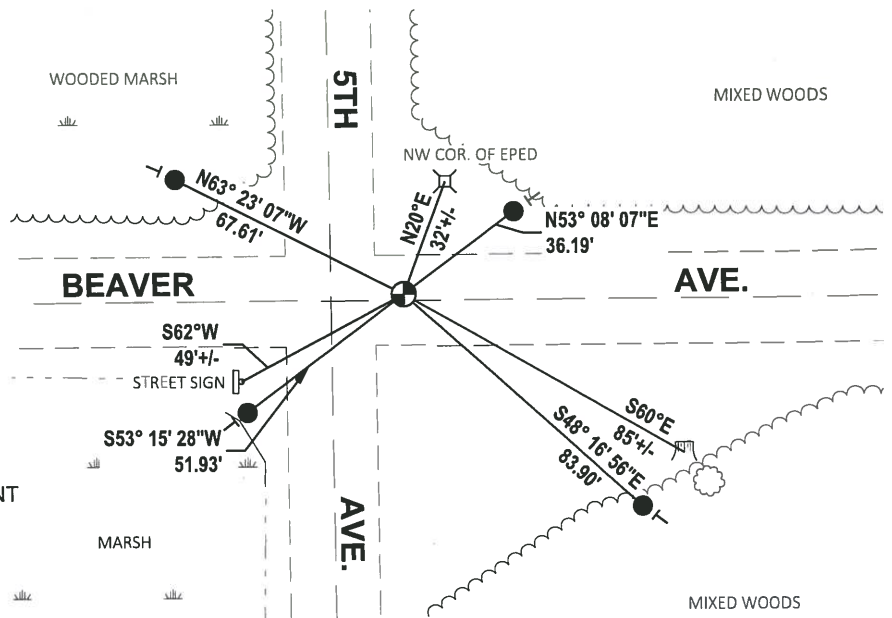
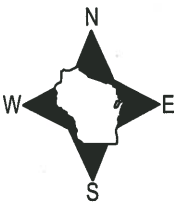
DATA SHOWN HERE ON THIS TIE SHEET IS CORRECT AND COMPLETE TO THE BEST OF MY KNOWLEDGE AND BELIEF.

PROFESSIONAL LAND SURVEYOR

DATE 4/4/19

TIE SKETCH

NOTE: THE CORNER LANDS ±2' NORTH OF BEAVER AVE. CENTERLINE AND ±20' EAST OF 5TH AVE. CENTERLINE.



- SET 3/4" x 18" IRON REBAR, 1.50#/FT
- ⊕ FOUND HARRISON (BROKEN-TOP) MONUMENT
- ┆ VINYL "T" POST
- ☼ WITNESS TREE
- ☼ WITNESS STUMP

ADAMS COUNTY

Survey Monument Record

TYPE OF MONUMENT: Harrison Standard

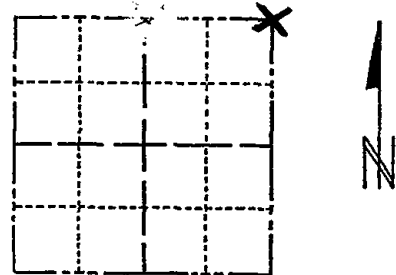
STATE PLANE COORDINATES: N _____
E _____

ELEVATION — M.S.L. DATUM: _____

THETA ANGLE: _____

FIELD BOOK: _____ PAGE _____

CORNER NO. 411 (25)
SECTION 8
TOWN 19
RANGE 7



LOCATION
(Indicated by 'X')

SEAL:



BASIS FOR MONUMENT LOCATION

(Use reverse side if necessary)

Show info such as: History of corner, with reference to Vol. and pg, dates, surveyor; exact description of monument replaced; if location computed, by taped or EDM traverse; landowner remarks, etc.

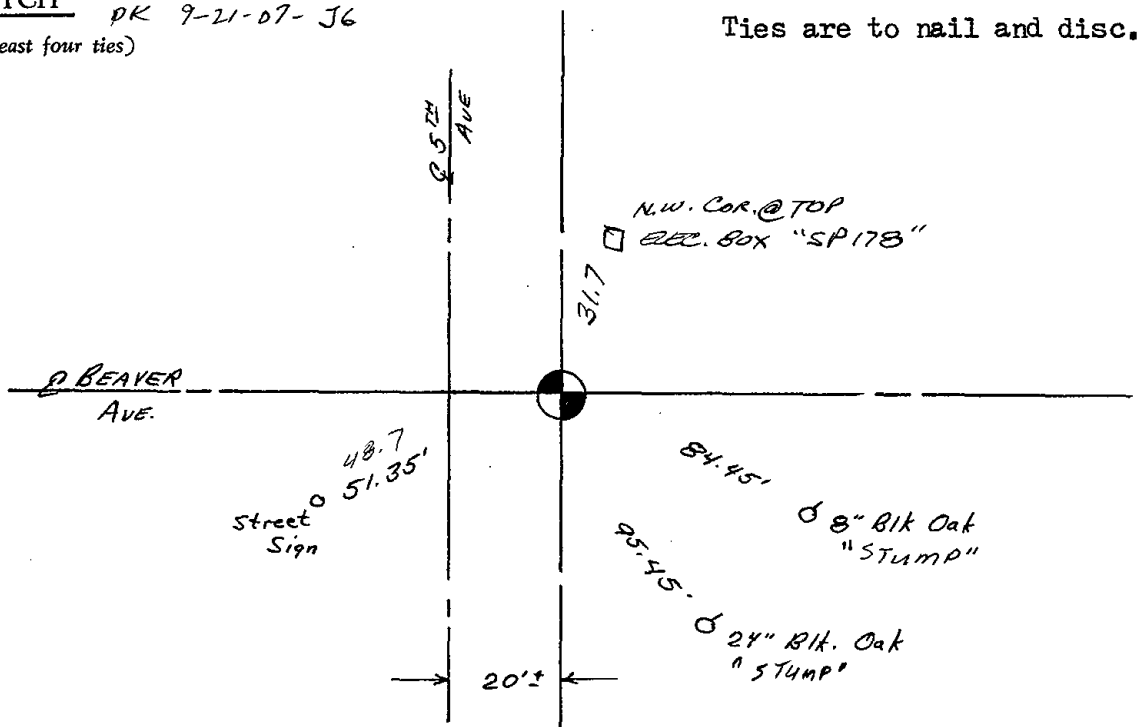
Excavated area with backhoe-found nothing.
Location determined by analyzing traverse
of entire section.

CORNER	O.K.	4-26-77	GR-SS
"	"	3-18-82	GR-SS
"	"	3-26-87	GR-SS
"	"	12-5-91	KE-SG
1-NEW	OR OK	3-7-91	JG-SS

CERTIFIED CORRECT:

Anthony B. Kiedrowski
Registered Land Surveyor
DATE: 6/6/74

TIE SKETCH OK 1-03-02 JG
PK 7-21-07- JG
(Show at least four ties)



Ties are to nail and disc.