

03 SECTION 19 TOWN 07 RANGE

# ADAMS COUNTY

COUNTY CORNER NO: 28  
 ROMPORTOL ID: 41907030020

## PUBLIC LAND SURVEY MONUMENT RECORD

TYPE OF MONUMENT: HARRISON  
 ADAMS COUNTY COORDINATES, NAD 83 (1907)

N. 282509.000

E. 575314.946

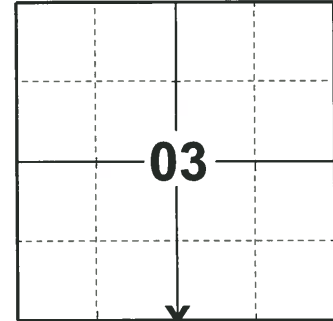
ELEVATION- - - - - DATUM - - - - -

FIELD WORK DATE: 05/01/2019

### BASIS FOR MONUMENT LOCATION

1975 - PLS 1103 RAN EDM/TRANSIT TRAVERSE AROUND SECTIONS 1, 2, 3, 10, 11, 12, 13, 14, 15, AND 24., TO DETERMINE SEARCH AREAS. DID NOT EXCAVATE FOR CORNER BECAUSE SEARCH AREA FELL IN CONSTRUCTION AREA OF DRAINAGE DITCH. SET SOUTH QUARTER CORNER OF SECTION 3 EQUIDISTANT AND ON LINE BETWEEN SOUTHEAST AND SOUTHWEST CORNERS OF SECTION 3.

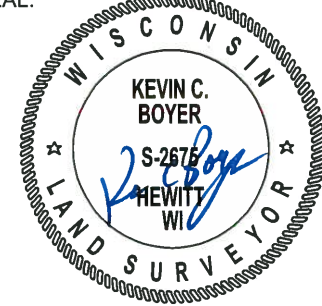
2019 - PLS 2675 FOUND HARRISON 4" BELOW THE GROUND AND DID NOT RECOVER ANY TIES OR WITNESSES. ACCEPTED THE HARRISON AS THE CORNER LOCATION AND SET 4 NEW TIES.



**LOCATION**

(INDICATE CORNER BY "X")

SEAL:

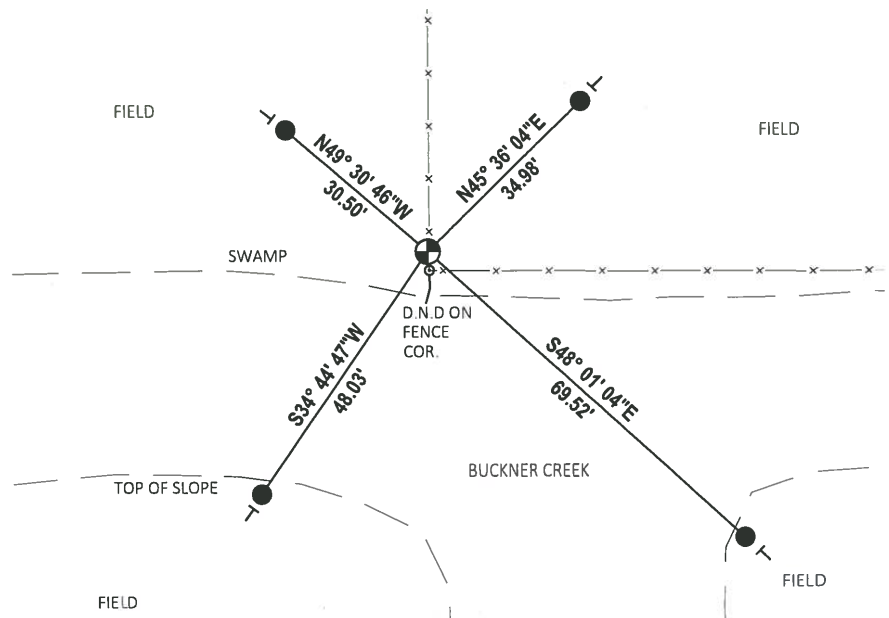
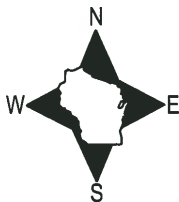


DATA SHOWN HERE ON THIS TIE SHEET IS CORRECT AND COMPLETE TO THE BEST OF MY KNOWLEDGE AND BELIEF.

PROFESSIONAL LAND SURVEYOR

DATE 6/4/19

### TIE SKETCH



- SET 3/4" x 18" IRON REBAR, 1.50#/FT
- ⊕ FOUND HARRISON MONUMENT
- VINYL "T" POST

ADAMS COUNTY

CORNER NO. 810  
SECTION 3  
TOWN 19  
RANGE 7

Survey Monument Record

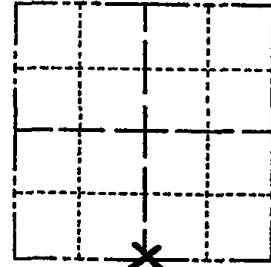
TYPE OF MONUMENT: Standard Harrison Monument

STATE PLANE COORDINATES: N \_\_\_\_\_  
E \_\_\_\_\_

ELEVATION — M.S.L. DATUM: \_\_\_\_\_

THETA ANGLE: \_\_\_\_\_

FIELD BOOK: \_\_\_\_\_ PAGE \_\_\_\_\_



LOCATION  
(Indicated by 'X')

SEAL:

BASIS FOR MONUMENT LOCATION

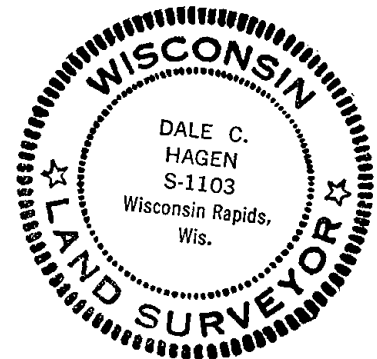
(Use reverse side if necessary)

Show info such as: History of corner, with reference to Vol. and pg, dates, surveyor; exact description of monument replaced; if location computed, by taped or EDM traverse; landowner remarks, etc.

Ran EDM/transit traverse around Sections 1, 2, 3, 10, 11, 12, 13, 14, 15, and 24., to determine search areas.

Did not excavate for corner because search area fell in construction area of drainage ditch.

Set South Quarter corner of Section 3 equidistant and on line between Southeast and Southwest corners of Section 3.



CORNER O.K. 4-26-77 GR-SS  
" " 8-23-82 PK-SS  
" " No TIES AVAIL. 3-31-87 SS  
" " (SEE SECTION SUMMARY)  
9-24-07-JL

CERTIFIED CORRECT:

*Dale C. Hagen*

Registered Land Surveyor  
DATE: November 5, 1975

TIE SKETCH

(Show at least four ties)

Note:

Ties in trees to nail in disc.  
No other suitable tie objects were available.

