

02
SECTION

19
TOWN

07
RANGE

ADAMS COUNTY

COUNTY CORNER NO: 31

ROMPORTOL ID: 41907020000

PUBLIC LAND SURVEY MONUMENT RECORD

TYPE OF MONUMENT: HARRISON (BROKEN-TOP)
ADAMS COUNTY COORDINATES, NAD 83 (1907)

N. 282471.053

E. 583216.837

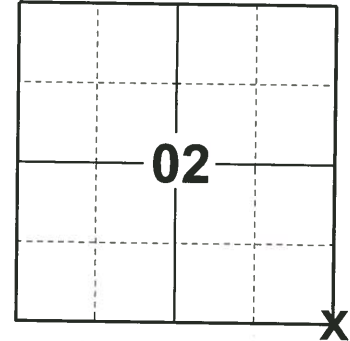
ELEVATION- _____ DATUM _____

FIELD WORK DATE: 04/30/2019

BASIS FOR MONUMENT LOCATION

1975 - PLS 1103 RAN EDM/TRANSIT TRAVERSE AROUND SECTION 1 AND THE ADJACENT SECTIONS IN THE TOWN OF COLBURN. EXCAVATION WITH BACKHOE BY A.B.KIDROWSKI, COUNTY SURVEYOR, YIELDED NO EVIDENCE OF THE ORIGINAL CORNER OR ANY REMONUMENTATION. SET SOUTHWEST CORNER OF SECTION 1 BY RETRACING SURVEY DONE BY L.L.LAMPERT, S-129, IN SECTION 2.

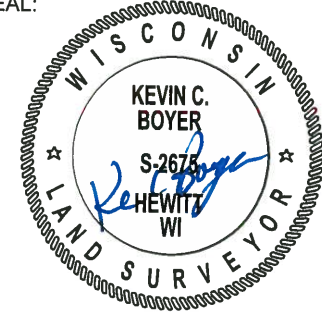
2019 - PLS 2675 FOUND HARRISON (BROKEN-TOP) 24" BELOW THE ROAD SURFACE AND 1 WITNESS. THE MONUMENT AGREES WITH THE EXISTING WITNESS. ACCEPTED THE HARRISON (BROKEN-TOP) AS THE CORNER LOCATION. SET 3 NEW TIES AND MEASURED TO A FOUND IRON ROD AND THE EXISTING WITNESS.



LOCATION

(INDICATE CORNER BY "X")

SEAL:



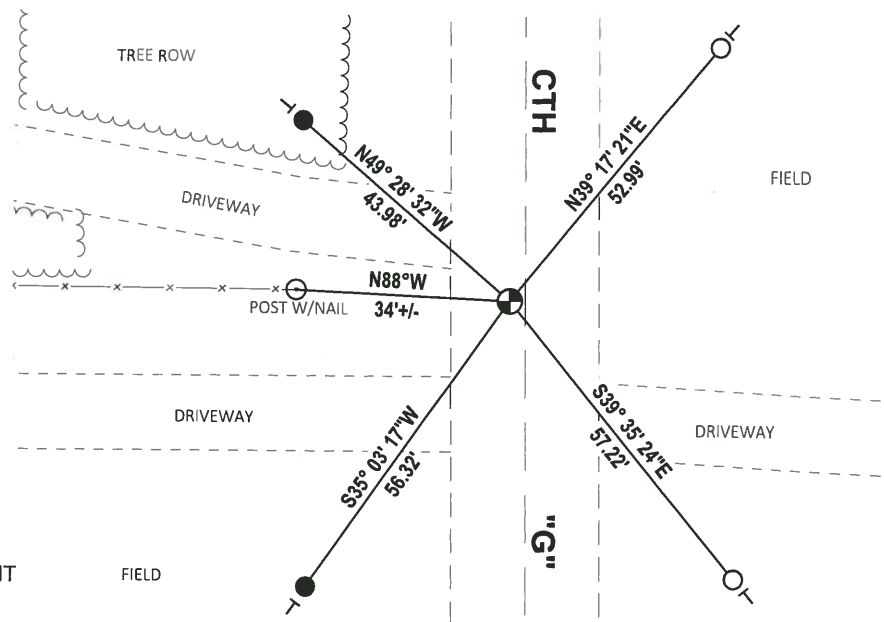
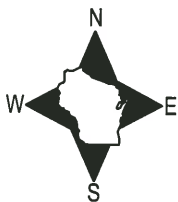
DATA SHOWN HERE ON THIS TIE SHEET IS CORRECT AND COMPLETE TO THE BEST OF MY KNOWLEDGE AND BELIEF.

PROFESSIONAL LAND SURVEYOR

DATE 6/4/19

TIE SKETCH

NOTE: THE CORNER LANDS 2.5'± WEST OF CTH "G" CENTERLINE.



- SET 3/4" x 18" IRON REBAR, 1.50#/FT
- FOUND 3/4" IRON ROD
- ⊕ FOUND HARRISON (BROKEN-TOP) MONUMENT
- VINYL "T" POST

ADAMS COUNTY

CORNER NO. 820
 SECTION 1
 TOWN 19
 RANGE 7

Survey Monument Record

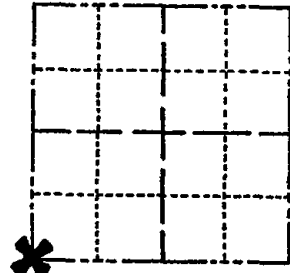
TYPE OF MONUMENT: STANDARD HARRISON MONUMENT

STATE PLANE COORDINATES: N _____
E _____

ELEVATION — M.S.L. DATUM: _____

THETA ANGLE: _____

FIELD BOOK: _____ PAGE _____



LOCATION
(Indicated by 'X')

SEAL:

BASIS FOR MONUMENT LOCATION

(Use reverse side if necessary)

Show info such as: History of corner, with reference to Vol. and pg, dates, surveyor; exact description of monument replaced; if location computed, by taped or EDM traverse; landowner remarks, etc.

Ran EDM/transit traverse around Section 1 and the adjacent sections in the town of Colburn.

Excavation with backhoe by A.B.Kiedrowski, County Surveyor, yielded no evidence of the original corner or any remonumentation.

Set Southwest corner of Section 1 by retracing survey done by L.L.Lampert, S-129, in Section 2.



CERTIFIED CORRECT:

Dale C. Hayen

Registered Land Surveyor
DATE: December 2, 1975

CORNER	O.K.	4-26-77	GR-SS
"	"	8-23-82	AK-SS
"	"	1-8-92	KZ-JG
"	"	3-18-97	JG-SS
"	"	1-31-02	JG

TIE SKETCH

OK, 9-24-07-JG ?
12" 81k.
Oak

(Show at least four ties)

NOTE

Ties in trees to nail in disc marked '878'.

