

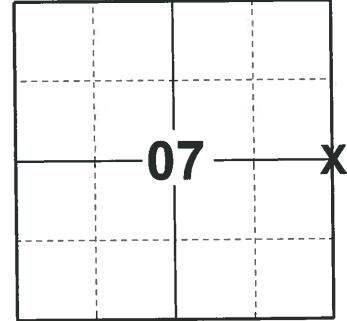
07 SECTION 19 TOWN 07 RANGE

ADAMS COUNTY

COUNTY CORNER NO: 35
 ROMPORTOL ID: 41907072000

PUBLIC LAND SURVEY MONUMENT RECORD

TYPE OF MONUMENT: HARRISON
 ADAMS COUNTY COORDINATES, NAD 83 (1907)
 N. 279832.544
 E. 562188.430
 ELEVATION- - - - - DATUM - - - - -
 FIELD WORK DATE: 05/06/2019



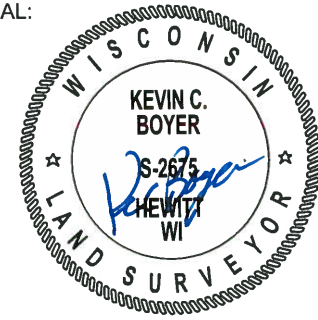
LOCATION
 (INDICATE CORNER BY "X")

BASIS FOR MONUMENT LOCATION

1973 - PLS 878 CALCULATED THE CORNER LOCATION ON A STRAIGHT LINE EQUIDISTANT BETWEEN SECTION CORNERS. SET A HARRISON MONUMENT AT THE CALCULATED LOCATION AND TIED OUT.

2019 - PLS 2675 FOUND A HARRISON MONUMENT 4" BELOW THE ROAD SURFACE, 1 TIE, 1 PROPERTY IRON AND 2 WITNESSES. THE MONUMENT AGREES WITH THE EXISTING TIE, PROPERTY IRON AND WITNESSES. ACCEPTED THE HARRISON MONUMENT AS THE CORNER LOCATION . SET 2 NEW TIES AND MEASURED THE TIES, PROPERTY IRON AND WITNESSES.

SEAL:



DATA SHOWN HERE ON THIS TIE SHEET IS CORRECT AND COMPLETE TO THE BEST OF MY KNOWLEDGE AND BELIEF.

PROFESSIONAL LAND SURVEYOR

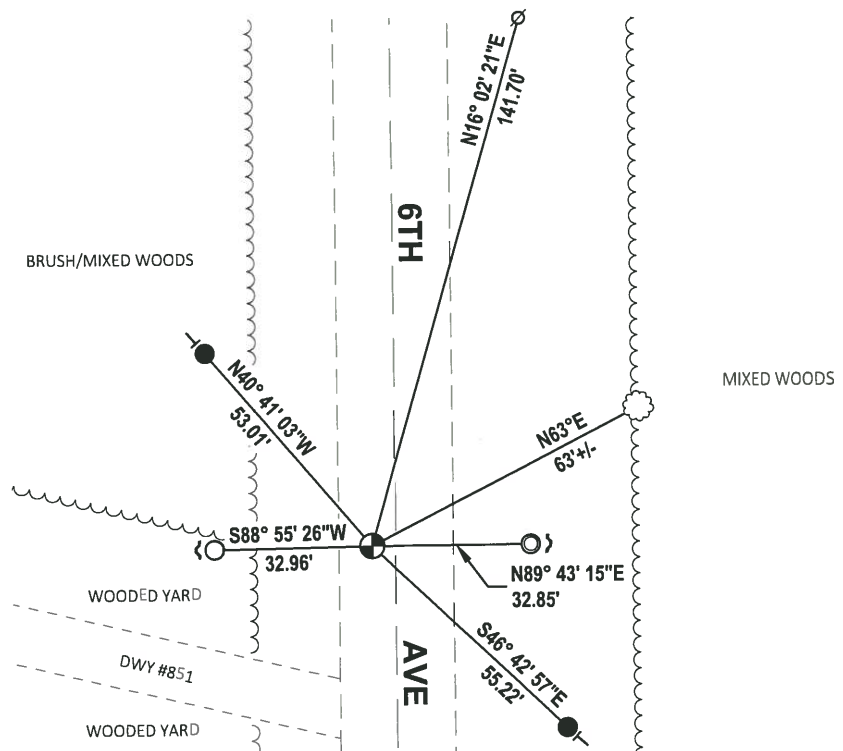
DATE 6/4/19

TIE SKETCH

NOTE: THE CORNER FALLS 5' ± WEST OF THE CENTERLINE OF 6TH AVE.



- SET 3/4" x 18" IRON REBAR, 1.50#/FT
- FOUND 3/4" IRON ROD
- FOUND 1-1/4" O.D. IRON PIPE
- ⊕ FOUND HARRISON MONUMENT
- ⊘ WITNESS POWER POLE
- ↗ STEEL FENCE POST
- ├ VINYL "T" POST
- ⊙ WITNESS TREE



ADAMS COUNTY

CORNER NO. 309

Survey Monument Record

SECTION 7

TYPE OF MONUMENT: 30" HARRISON

TOWN 19

STATE PLANE COORDINATES: N _____

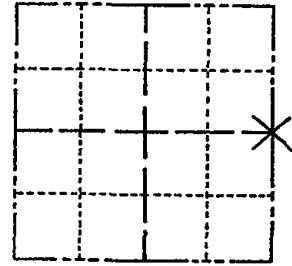
RANGE 7

E _____

ELEVATION — M.S.L. DATUM: _____

THETA ANGLE: _____

FIELD BOOK: 108 PAGE 95



LOCATION
(Indicated by 'X')

SEAL:

BASIS FOR MONUMENT LOCATION

(Use reverse side if necessary)

Show info such as: History of corner, with reference to Vol. and pg, dates, surveyor; exact description of monument replaced; if location computed, by taped or EDM traverse; landowner remarks, etc.

Set on a straight line equidistant between section corners.



CORNER	O.K.	4-26-77	GR-SS
"	"	3-18-82	GR-SS
"	"	3-30-87	GR-SS
1-NEW	COR OK	1-8-92	KZ-JG
1-NEW	"	3-7-97	JG-SS

CERTIFIED CORRECT:

Anthony B. Kiedrowski
Registered Land Surveyor

DATE: 9-18-73

TIE SKETCH 1-NEW, COR OK 1-03-02 JG

(Show at least four ties)

