

09  
SECTION

19  
TOWN

07  
RANGE

# ADAMS COUNTY

COUNTY CORNER NO: 37

ROMPORTOL ID: 41907092000

## PUBLIC LAND SURVEY MONUMENT RECORD

TYPE OF MONUMENT: HARRISON  
ADAMS COUNTY COORDINATES, NAD 83 (1907)

N. 279856.207

E. 572717.414

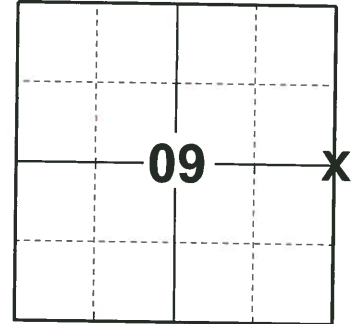
ELEVATION- - - - DATUM - - - -

FIELD WORK DATE: 05/02/2019

### BASIS FOR MONUMENT LOCATION

1975 - PLS 1103 RAN EDM/TRANSIT TRAVERSE AROUND SECTIONS 1, 2, 3, 10, 11, 12, 13, 14, 15, AND 24 TO DETERMINE SEARCH AREAS FOR INVESTIGATION. COULD FIND NO EVIDENCE OF THE ORIGINAL CORNER OR ANY REMONUMENTATION. RELOCATED CORNER PROPORTIONATE TO ORIGINAL GOVERNMENT DISTANCES AND ON LINE BETWEEN ADJACENT SECTION CORNERS.

2019 - PLS 2675 FOUND HARRISON 8" BELOW THE ROAD SURFACE, 1 TIE AND 1 WITNESS. THE MONUMENT AGREES WITH THE EXISTING TIE AND WITNESS. ACCEPTED THE HARRISON AS THE CORNER LOCATION. SET 3 NEW TIES AND MEASURED TO THE EXISTING TIE AND WITNESS.



LOCATION  
(INDICATE CORNER BY "X")

SEAL:



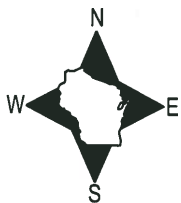
DATA SHOWN HERE ON THIS TIE SHEET IS CORRECT AND COMPLETE TO THE BEST OF MY KNOWLEDGE AND BELIEF.

PROFESSIONAL LAND SURVEYOR

DATE 6/4/19

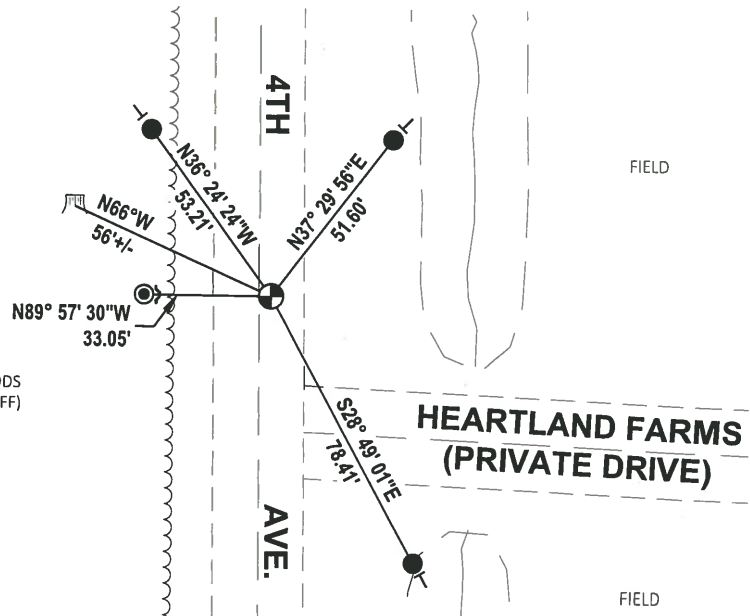
### TIE SKETCH

NOTE: THE CORNER LANDS ±3' EAST OF 4TH AVE. CENTERLINE.



- SET 3/4" x 18" IRON REBAR, 1.50#/FT
- ⊙ FOUND 1-1/4" IRON ROD
- ⊕ FOUND HARRISON MONUMENT
- ↘ STEEL FENCE POST
- ┊ VINYL "T" POST
- ⌘ WITNESS TREE STUMP

OPEN WOODS  
(LOGGED OFF)

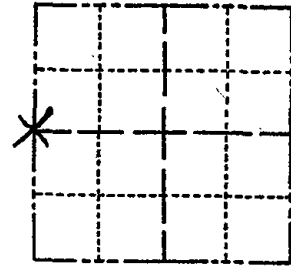


# ADAMS COUNTY

CORNER NO. 828  
 SECTION 10  
 TOWN 19  
 RANGE 7

## Survey Monument Record

TYPE OF MONUMENT: Standard Harrison  
 STATE PLANE COORDINATES: N \_\_\_\_\_  
 E \_\_\_\_\_  
 ELEVATION — M.S.L. DATUM: \_\_\_\_\_  
 THETA ANGLE: \_\_\_\_\_  
 FIELD BOOK: \_\_\_\_\_ PAGE \_\_\_\_\_



LOCATION  
(Indicated by 'X')

SEAL:

### BASIS FOR MONUMENT LOCATION

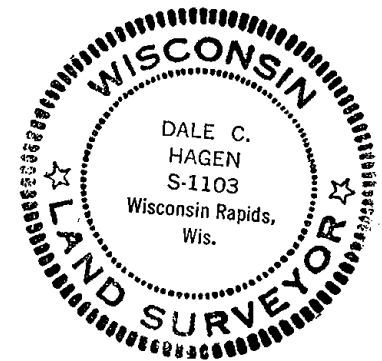
(Use reverse side if necessary)

Show info such as: History of corner, with reference to Vol. and pg, dates, surveyor; exact description of monument replaced; if location computed, by taped or EDM traverse; landowner remarks, etc.

Ran EDM/transit traverse around Sections 1, 2, 3, 10, 11, 12, 13, 14, 15, and 24 to determine search areas for investigation.

Could find no evidence of the original corner or any remonumentation.

Relocated corner proportionate to original government distances and on line between adjacent section corners.



CORNER	O.K.	6-14-77	SK-SS
"	"	3-18-82	GR-SS
ALL OK		3-30-87	GR-SS
"		1-8-92	KZ-JG

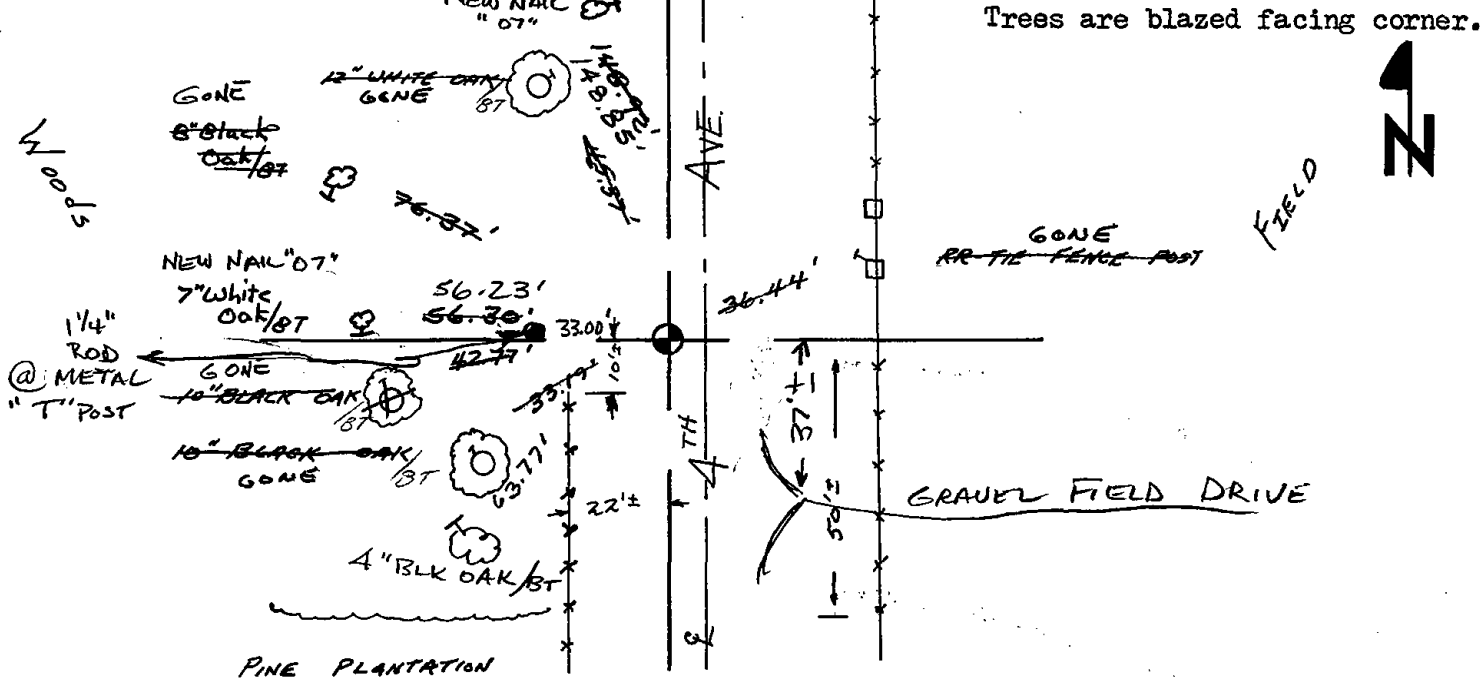
CERTIFIED CORRECT:

*Dale C. Hagen*  
 Registered Land Surveyor

DATE: December 2, 1975

TIE SKETCH Cor OK 3-18-97 96-55 2-GONE, 3-NEW, 9-24-07-JG  
OK 1-03-02 JG 5" white Oak/BT NEW NAIL "07"

(Show at least four ties)



NOTE:  
 Ties in trees to nail in disc.  
 Trees are blazed facing corner.

