

10
SECTION

19
TOWN

07
RANGE

ADAMS COUNTY

COUNTY CORNER NO: 38
ROMPORTOL ID: 41907102000

PUBLIC LAND SURVEY MONUMENT RECORD

TYPE OF MONUMENT: HARRISON (BROKEN-TOP)
ADAMS COUNTY COORDINATES, NAD 83 (1907)

N. 279856.063

E. 577945.449

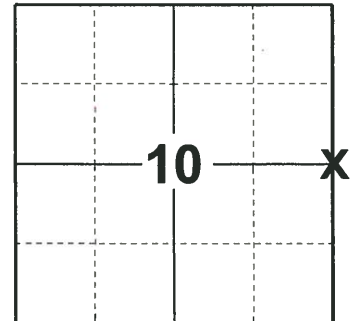
ELEVATION- - - - - DATUM - - - - -

FIELD WORK DATE: 05/14/2019

BASIS FOR MONUMENT LOCATION

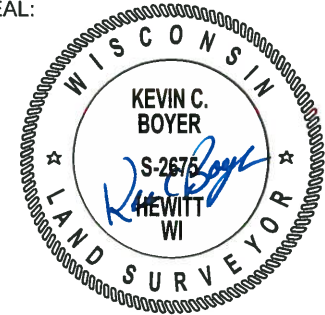
1983 - PLS 1444 THIS CORNER WAS SET EQUIDISTANT AND ON LINE BETWEEN ADJACENT SECTION CORNERS.

2019 - PLS 2675 FOUND HARRISON (BROKEN-TOP) 10" BELOW THE GROUND AND DID NOT RECOVER ANY TIES OR WITNESSES, BUT DETERMINED THAT THE CORNER IS ON A NEAR STRAIGHT LINE AND EQUIDISTANT BETWEEN THE NE AND SE CORNERS OF SECTION 10. ACCEPTED THE HARRISON (BROKEN-TOP) AS THE CORNER LOCATION AND SET 4 NEW TIES.



LOCATION
(INDICATE CORNER BY "X")

SEAL:

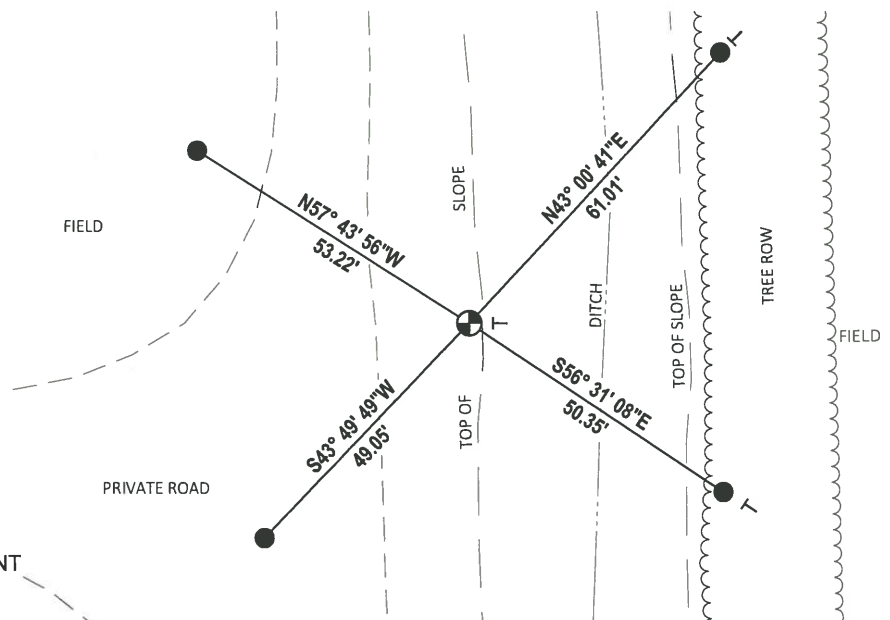
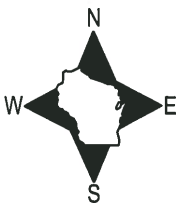


DATA SHOWN HERE ON THIS TIE SHEET IS CORRECT AND COMPLETE TO THE BEST OF MY KNOWLEDGE AND BELIEF.

PROFESSIONAL LAND SURVEYOR

DATE 6/4/19

- TIE SKETCH

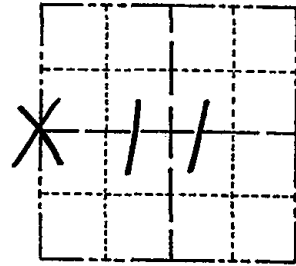


- SET 3/4" x 18" IRON REBAR, 1.50#/FT
- ⊕ FOUND HARRISON (BROKEN-TOP) MONUMENT
- VINYL "T" POST

Government Land Corner Certificate

ADAMS County
 TYPE OF MONUMENT: Harrison
 STATE PLANE COORDINATES: N _____
 E _____
 ELEVATION — M.S.L. DATUM: _____
 THETA ANGLE: _____
 FIELD BOOK: 92 PAGE 151
 DRAWN BY: STH

CORNER NO. 38
 SECTION 11
 TOWN 19
 RANGE 7



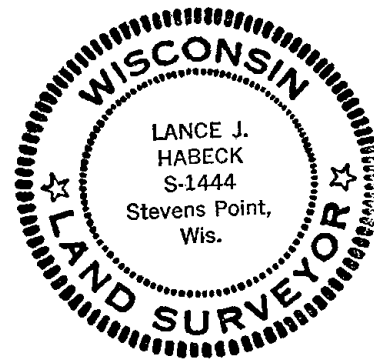
LOCATION
(Indicated by 'X')

BASIS FOR MONUMENT LOCATION

Show info such as: History of corner, with reference to Vol. and pg., dates, surveyor; exact description of monument replaced; if location computed, by taped or EDM traverse; landowner remarks, etc. (Use reverse side if necessary)

This corner was set equidistant and on line between adjacent Section corners.

SEAL:



DATA SHOWN HERE ON
CERTIFIED CORRECT:

Lance J. Habek
Registered Land Surveyor

DATE: 4/29/83

TIE SKETCH

Show at least four ties, also fence lines, roads, topo, size and type of witness trees' and if off road - best way to arrive at corner.

ALL TIES ARE TO
1" X 24" IRON PIPES
WITH ALUM. WITNESS
CAPS.

