

12
SECTION

19
TOWN

06
RANGE

ADAMS COUNTY

COUNTY CORNER NO: 53

ROMPORTOL ID: 41906120000

PUBLIC LAND SURVEY MONUMENT RECORD

TYPE OF MONUMENT: HARRISON
ADAMS COUNTY COORDINATES, NAD 83 (2007)

N. 277102.263

E. 557192.879

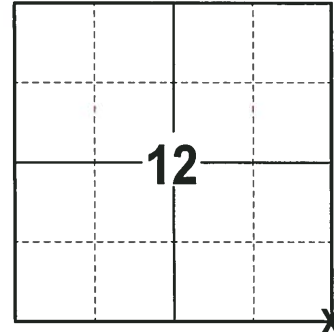
ELEVATION- DATUM

FIELD WORK DATE: 01/23/2018

BASIS FOR MONUMENT LOCATION

2013 - PLS 1478 RE-DRAFTED PRIOR TIE SHEET BY ANTHONY B. KIEDROWSKI FROM 1972. KIEDROWSKI EXCAVATED THE AREA WITH A BACKHOE AND FOUND A 6"x8" DARK BLACK MARK IN THE SOIL THAT CAME TO A FLAT POINT ABOUT 2 FEET DOWN. EXCAVATED FURTHER AND FOUND TWO STONES SET ONE ON TOP THE OTHER. MONUMENTED THE STONES BY SETTING A HARRISON MONUMENT AT THE CORNER. TRAVERSE OF THE SECTION INDICATES THE STONE TO BE THE CORRECT LOCATION. TIED OUT CORNER.

2018 - PLS 2994 FOUND A HARRISON MONUMENT 12" BELOW THE ROAD SURFACE. FOUND NO EVIDENCE OF ANY OF THE TIES OR WITNESSES. ACCEPTED THE HARRISON MONUMENT AS THE BEST EVIDENCE OF THE CORNER LOCATION. SET 4 NEW TIES AND MEASURED TO THE TIES.



LOCATION
(INDICATE CORNER BY "X")

SEAL:



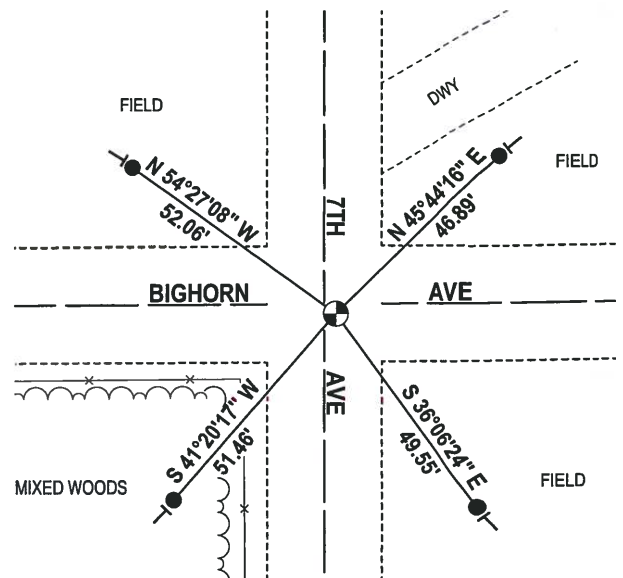
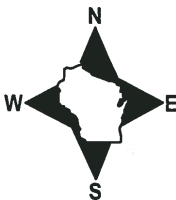
DATA SHOWN HERE ON THIS TIE SHEET IS CORRECT AND COMPLETE TO THE BEST OF MY KNOWLEDGE AND BELIEF.

PROFESSIONAL LAND SURVEYOR

DATE 3-1-18

TIE SKETCH

NOTE: THE CORNER FALLS 2± EAST OF THE CENTERLINE OF 7TH AVE AND 2± SOUTH OF THE CENTERLINE OF BIGHORN AVE.



- 3/4" x 18" IRON REBAR SET, 1.50#/FT
- ⊕ HARRISON FOUND
- VINYL "T" POST

