

09 SECTION 19 TOWN 07 RANGE

ADAMS COUNTY

COUNTY CORNER NO: 46
ROMPORTOL ID: 41907090020

PUBLIC LAND SURVEY MONUMENT RECORD

TYPE OF MONUMENT: HARRISON
ADAMS COUNTY COORDINATES, NAD 83 (1907)
N. 277225.853
E. 570092.203

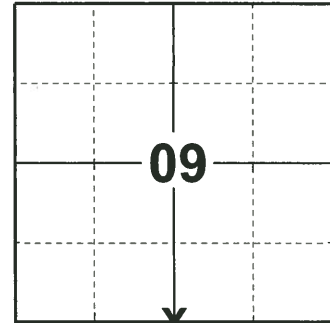
ELEVATION- - - - - DATUM - - - - -

FIELD WORK DATE: 05/06/2019

BASIS FOR MONUMENT LOCATION

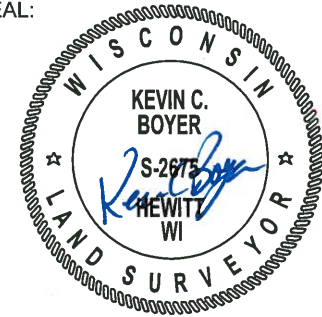
1983 - PLS 1551 A 6'X6' AREA WAS EXCAVATED BY SHOVEL TO DEPTH OF 2.5'. NO TRACE OF ORIGINAL CORNER WAS FOUND. ORIGINAL BEARING TREES ARE NO LONGER EVIDENT. CORNER WAS RE-ESTABLISHED EQUIDISTANT ON A STRAIGHT LINE BETWEEN ADJACENT SECTION CORNERS. THIS LOCATION IS IN AGREEMENT WITH THE UNRECORDED PLAT BY DAVID CHENEY OF THE S1/2 OF THE NE1/4, AND FALLS ON AN OLD E-W FENCE LINE NEAR THE 40 CORNER TO THE WEST.

2019 - PLS 2675 FOUND HARRISON 4" BELOW THE GROUND SURFACE AND 1 WITNESS. THE MONUMENT AGREES WITH THE EXISTING WITNESS. ACCEPTED THE HARRISON AS THE CORNER LOCATION. SET 4 NEW TIES AND MEASURED TO THE EXISTING WITNESS.



LOCATION
(INDICATE CORNER BY "X")

SEAL:



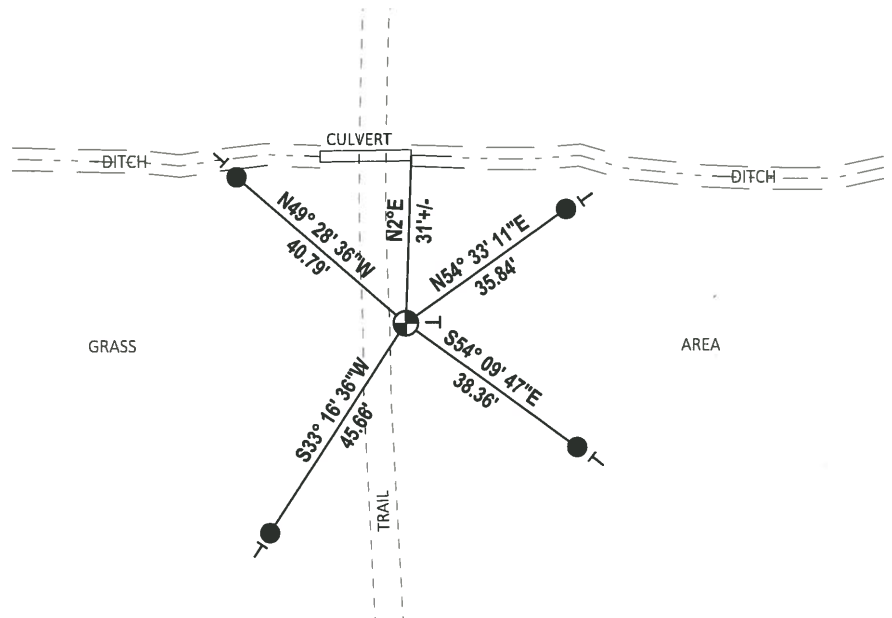
DATA SHOWN HERE ON THIS TIE SHEET IS CORRECT AND COMPLETE TO THE BEST OF MY KNOWLEDGE AND BELIEF.

PROFESSIONAL LAND SURVEYOR

DATE 6/4/19

- TIE SKETCH -

NOTE: MEASUREMENT TO CULVERT IS TO THE EAST END OF PIPE



- SET 3/4" x 18" IRON REBAR, 1.50#/FT
- ⊕ FOUND HARRISON MONUMENT
- | VINYL "T" POST

U.S. PUBLIC LAND SURVEY MONUMENT RECORD

ADAMS COUNTY

TYPE OF MONUMENT: Standard Harrison

STATE PLANE COORDINATES: N _____
E _____

ELEVATION — M.S.L. DATUM: _____

THETA ANGLE: _____

FIELD BOOK: Adams County PAGE 35

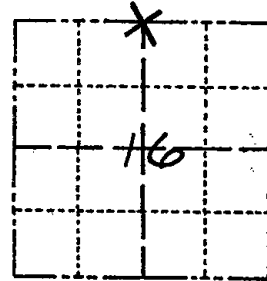
DRAWN BY: D. Riesop

CORNER NO. 46

SECTION 16

TOWN 19N

RANGE 7E



LOCATION
(Indicated by 'X')

BASIS FOR MONUMENT LOCATION

Show info such as: History of corner, with reference to Vol. and pg., dates, surveyor; exact description of monument replaced; if location computed, by taped or EDM traverse; landowner remarks, etc. (Use reverse side if necessary)
(in conformance with Section A-E 502 of the Wisconsin Administrative Code)

A 6'x6' area was excavated by shovel to depth of 2.5'. No trace of original corner was found. Original bearing trees are no longer evident.

Corner was re-established equi-distant on a straight line between adjacent section corners.

This location is in agreement with the unrecorded plat by David Cheney of the S 1/2 of the NE 1/4, and falls on an old E-W fence line near the 40 corner to the West.

SEAL:



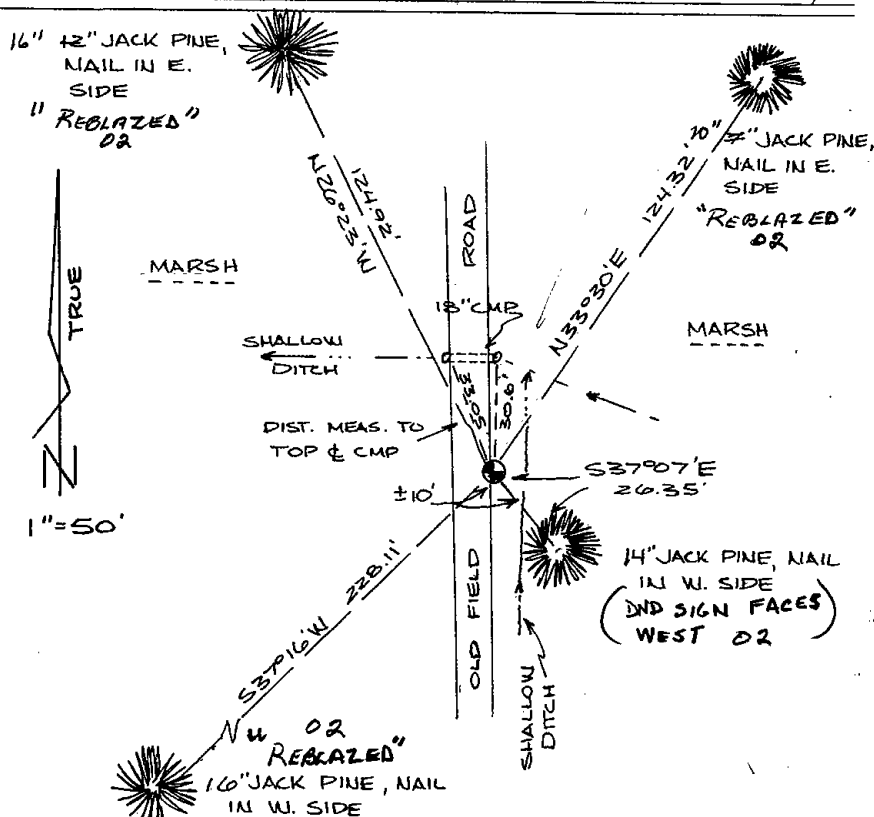
DATA SHOWN HERE ON CERTIFIED CORRECT:

David Riesop
Registered Land Surveyor

DATE: 5/2/83

TIE SKETCH

Show at least four ties, also fence lines, roads, topo, size and type of witness trees and if off road - best way to arrive at corner.



MAINTENANCE RECORD

Date	Init.	Remarks
4-6-87	GR-SS	OK
1-04-02	JG	All OK