

10  
SECTION    19  
TOWN    07  
RANGE

# ADAMS COUNTY

COUNTY CORNER NO: 48  
ROMPORTOL ID: 41907100020

## PUBLIC LAND SURVEY MONUMENT RECORD

TYPE OF MONUMENT: 3/4" x 24" IRON REBAR, 1.50#/FT  
ADAMS COUNTY COORDINATES, NAD 83 (1907)

N. 277203.199

E. 575347.975

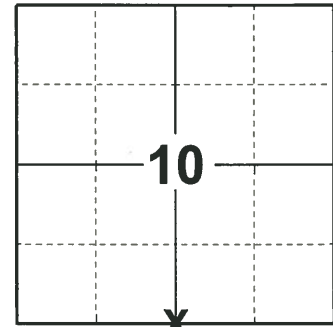
ELEVATION- \_\_\_\_\_ DATUM \_\_\_\_\_

FIELD WORK DATE: 05/14/2019

### BASIS FOR MONUMENT LOCATION

1983 - PLS 1444 THIS CORNER WAS SET EQUIDISTANT AND ON LINE BETWEEN ADJACENT SECTION CORNERS. THIS CORNER FALLS IN A LARGE CULTIVATED FIELD AND NO TIES ARE AVAILABLE. MONUMENT IS 18" BELOW SURFACE.

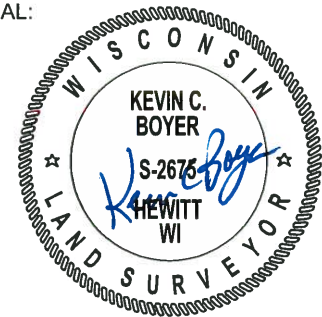
2019 - PLS 2675 FOUND NO EVIDENCE OF THE CORNER OR ITS TIES. SET A 3/4" x 24" REBAR 24" BELOW THE GROUND AND ON A STRAIGHT LINE EQUIDISTANT BETWEEN THE SW AND SE CORNERS OF SECTION 10. THIS POSITION FITS WELL WITH THE 1 TIE SHEET DATED 1983 BY PLS 1444. ACCEPTED THIS AS THE BEST POSITION FOR THE CORNER AND SET 4 NEW TIES.



**LOCATION**

(INDICATE CORNER BY "X")

SEAL:

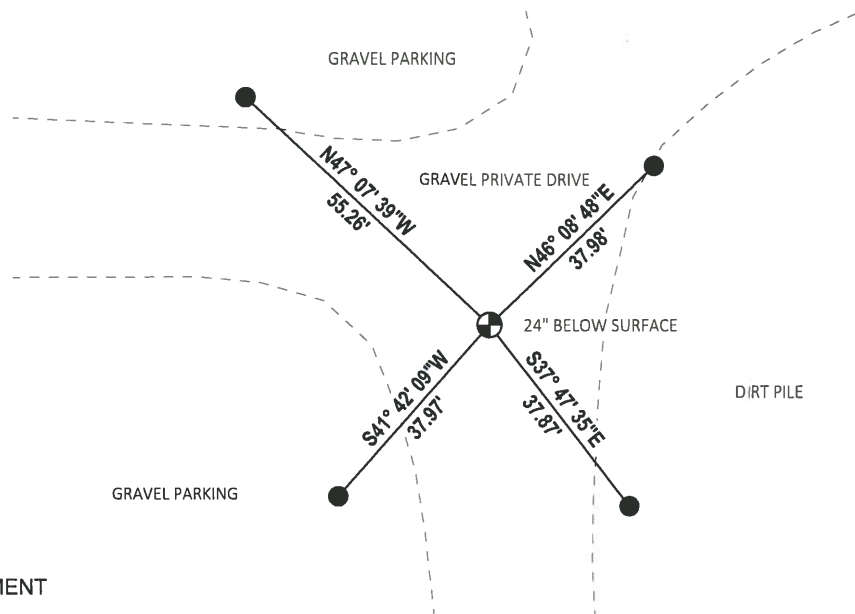
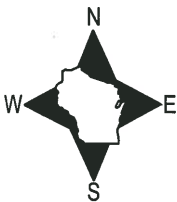


DATA SHOWN HERE ON THIS TIE SHEET IS CORRECT AND COMPLETE TO THE BEST OF MY KNOWLEDGE AND BELIEF.

PROFESSIONAL LAND SURVEYOR

DATE 6/4/19

### TIE SKETCH

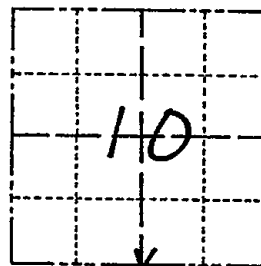


- SET 3/4" x 18" IRON REBAR, 1.50#/FT
- ⊕ SET 3/4" x 24" IRON REBAR, 1.50#/FT MONUMENT

# Government Land Corner Certificate

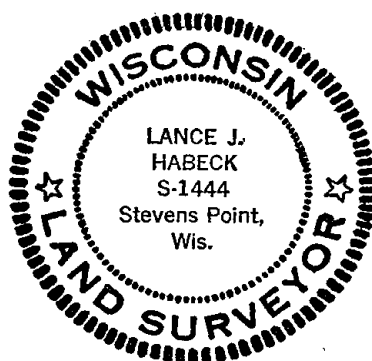
ADAMS County  
TYPE OF MONUMENT: Harrison  
STATE PLANE COORDINATES: N \_\_\_\_\_  
E \_\_\_\_\_  
ELEVATION — M.S.L. DATUM: \_\_\_\_\_  
THETA ANGLE: \_\_\_\_\_  
FIELD BOOK: FILE PAGE \_\_\_\_\_  
DRAWN BY: SSH

CORNER NO. 48  
SECTION 10  
TOWN 19  
RANGE 7



LOCATION  
(Indicated by 'X')

SEAL:



DATA SHOWN HERE ON  
CERTIFIED CORRECT:

Lance J. Habeck  
Registered Land Surveyor

DATE: 4/29/83

## TIE SKETCH

Show at least four ties, also fence lines, roads, topo, size and type of witness trees and if off road - best way to arrive at corner.

