

10
SECTION

19
TOWN

07
RANGE

ADAMS COUNTY

COUNTY CORNER NO: 49

ROMPORTOL ID: 4190710000

PUBLIC LAND SURVEY MONUMENT RECORD

TYPE OF MONUMENT: HARRISON (BROKEN-TOP)
ADAMS COUNTY COORDINATES, NAD 83 (1907)

N. 277191.696

E. 577967.200

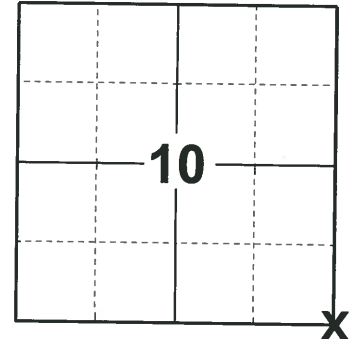
ELEVATION- DATUM

FIELD WORK DATE: 05/14/2019

BASIS FOR MONUMENT LOCATION

1983 - PLS 1444 THIS CORNER SET BY DOUBLE PROPORTIONATE MEASURE.

2019 - PLS 2675 FOUND HARRISON (BROKEN-TOP) 20" BELOW THE ROAD SURFACE AND DID NOT RECOVER ANY TIES OR WITNESSES. ACCEPTED HARRISON (BROKEN-TOP) AS THE CORNER LOCATION AND SET 4 NEW TIES.



LOCATION
(INDICATE CORNER BY "X")

SEAL:



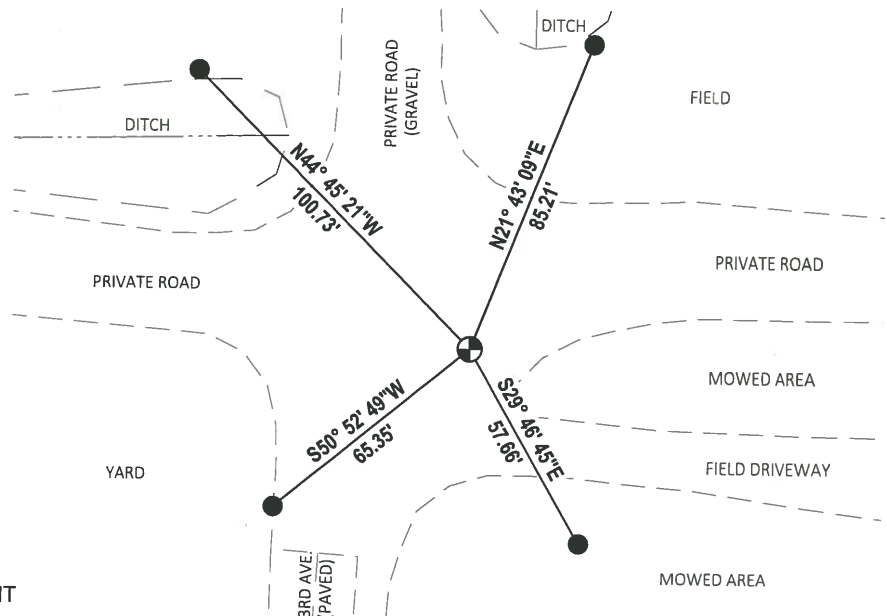
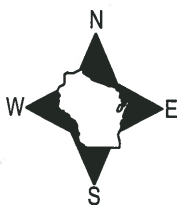
DATA SHOWN HERE ON THIS TIE SHEET IS CORRECT AND COMPLETE TO THE BEST OF MY KNOWLEDGE AND BELIEF.

PROFESSIONAL LAND SURVEYOR

DATE 6/4/19

- TIE SKETCH

NOTE: ALL REBAR SET 18"± DOWN.



- SET 3/4" x 18" IRON REBAR, 1.50#/FT
- ⊕ FOUND HARRISON (BROKEN-TOP) MONUMENT

Government Land Corner Certificate

ADAMS

County

TYPE OF MONUMENT: Harrison

STATE PLANE COORDINATES: N _____
E _____

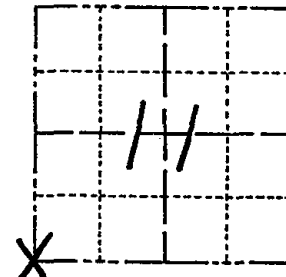
ELEVATION — M.S.L. DATUM: _____

THETA ANGLE: _____

FIELD BOOK: 92 PAGE 150

DRAWN BY: SJH

CORNER NO. 49
SECTION 11
TOWN 19
RANGE 7



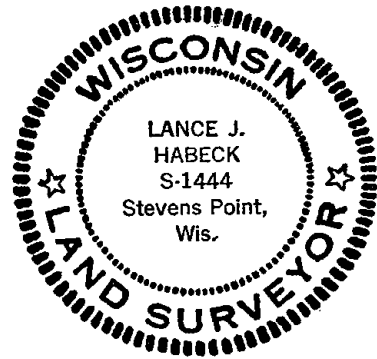
BASIS FOR MONUMENT LOCATION

Show info such as: History of corner, with reference to Vol. and pg., dates, surveyor; exact description of monument replaced; if location computed, by taped or EDM traverse; landowner remarks, etc. (Use reverse-side if necessary)

This corner was set by double proportionate measure.

LOCATION
(Indicated by 'X')

SEAL:



DATA SHOWN HERE ON
CERTIFIED CORRECT:

Lance J. Habeck
Registered Land Surveyor

DATE: 4/29/83

TIE SKETCH

Show at least four ties, also fence lines, roads, topo, size and type of witness trees and if off road - best way to arrive at corner.

