

11 SECTION    19 TOWN    07 RANGE

# ADAMS COUNTY

COUNTY CORNER NO: 51  
ROMPORTOL ID: 41907110000

## PUBLIC LAND SURVEY MONUMENT RECORD

TYPE OF MONUMENT: SURVEY NAIL  
ADAMS COUNTY COORDINATES, NAD 83 (1907)

N. 277194.594

E. 583278.725

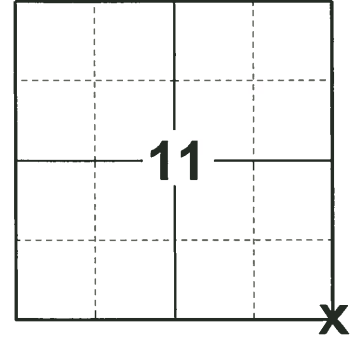
ELEVATION- - - - - DATUM - - - - -

FIELD WORK DATE: 05/02/2019

### BASIS FOR MONUMENT LOCATION

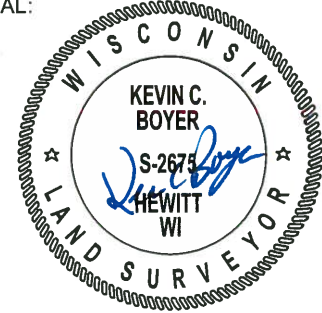
1975 - PLS 1103 RAN EDM/TRANSIT TRAVERSE AROUND SECTIONS 1, 2, 3, 10, 11, 12, 13, 14, 15, AND 24 TO DETERMINE SEARCH AREAS FOR INVESTIGATION. EXCAVATION WITH BACKHOE BY A.B.KIEDROWSKI, COUNTY SURVEYOR, YIELDED NO EVIDENCE OF THE ORIGINAL CORNER OR ANY REMONUMENTATION. RELOCATED CORNER BY DOUBLING OVER DISTANCE OF THE EAST LINE OF THE SOUTHEAST QUARTER OF SECTION 14.

2019 - PLS 2675 FOUND 1 EXISTING TIE AND COULDN'T FIND ANY EVIDENCE OF A CORNER MONUMENT. SET CORNER BY EXTENDING THE SOUTH LINE OF THE SE 1/4 OF SECTION 12 AND EQUIDISTANT BETWEEN THE S 1/4 AND THE SE 1/4 OF SECTION 12. BY DOING THIS THE CALCULATED POSITION FITS WELL WITH THE FOUND TIE. ACCEPTED THE CALCULATED POSITION AS THE BEST EVIDENCE FOR THE CORNER LOCATION. SET A SURVEY NAIL IN THE CALCULATED POSITION, SET 3 NEW TIES AND MEASURED TO THE EXISTING TIE.



**LOCATION**  
(INDICATE CORNER BY "X")

SEAL:



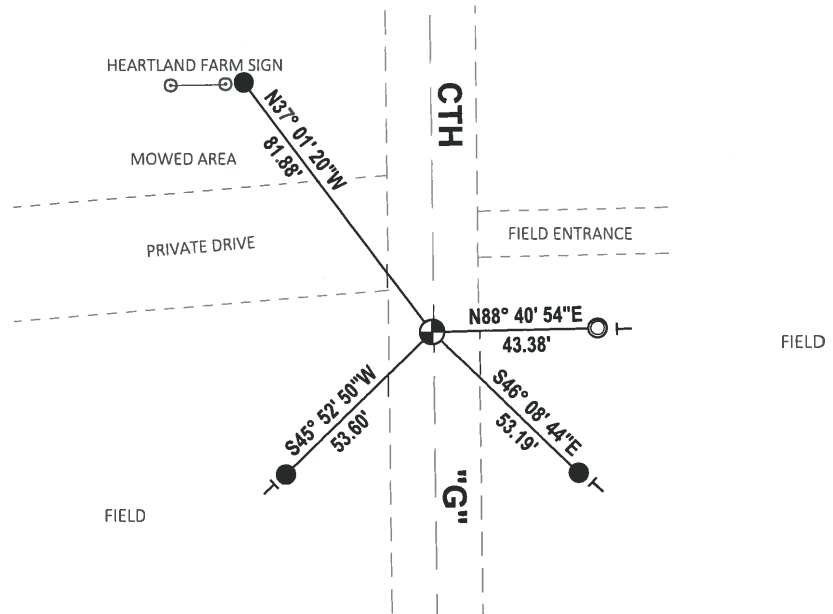
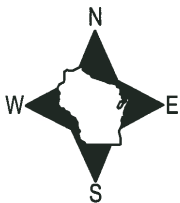
DATA SHOWN HERE ON THIS TIE SHEET IS CORRECT AND COMPLETE TO THE BEST OF MY KNOWLEDGE AND BELIEF.

PROFESSIONAL LAND SURVEYOR

DATE 6/4/19

### - TIE SKETCH

NOTE: THE CORNER LANDS ON THE CENTERLINE OF CTH "G".



- SET 3/4" x 18" IRON REBAR, 1.50#/FT
- FOUND 1-1/4" O.D. IRON PIPE
- ⊕ SET SURVEY NAIL MONUMENT
- ⊣ VINYL "T" POST

ADAMS COUNTY

Survey Monument Record

TYPE OF MONUMENT: Standard Harrison

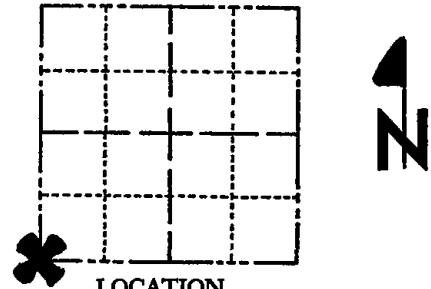
STATE PLANE COORDINATES: N \_\_\_\_\_  
E \_\_\_\_\_

ELEVATION — M.S.L. DATUM: \_\_\_\_\_

THETA ANGLE: \_\_\_\_\_

FIELD BOOK: \_\_\_\_\_ PAGE \_\_\_\_\_

CORNER NO. 829 (51)  
SECTION 12  
TOWN 19  
RANGE 7



LOCATION  
(Indicated by 'X')

SEAL:

BASIS FOR MONUMENT LOCATION

(Use reverse side if necessary)

Show info such as: History of corner, with reference to Vol. and pg. dates, surveyor; exact description of monument replaced; if location computed, by taped or EDM traverse; landowner remarks, etc.

Ran EDM/transit traverse around Sections 1, 2, 3, 10, 11, 12, 13, 14, 15, and 24 to determine search areas for investigation.

Excavation with backhoe by A.B.Kiedrowski, County Surveyor, yielded no evidence of the original corner or any remonumentation.

Relocated corner by doubling over distance of the East line of the Southeast Quarter of Section 14.



CERTIFIED CORRECT:

Dale C. Hagen  
Registered Land Surveyor  
DATE: December 2, 1975

CORNER	O.K.	4-26-77	GR-SS
"	"	8-24-82	PK-SS
"	"	4-6-87	GR-SS
"	"	1-8-92	K&JG
"	"	3-18-97	JG-SS

TIE SKETCH OK 1-04-02 JG  
OK 9-24-07 JG

(Show at least four ties)

NOTE:  
Ties to nail in disc.  
Only three bearing objects were available.

