

13
SECTION

19
TOWN

06
RANGE

ADAMS COUNTY

COUNTY CORNER NO: 60

ROMPORTOL ID: 41906132000

PUBLIC LAND SURVEY MONUMENT RECORD

TYPE OF MONUMENT: HARRISON
ADAMS COUNTY COORDINATES, NAD 83 (2007)

N. 274461.431

E. 557182.541

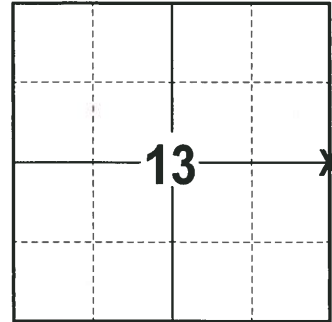
ELEVATION- DATUM

FIELD WORK DATE: 01/23/2018

BASIS FOR MONUMENT LOCATION

1977 - PLS 1103 RAN AN EDM/T2 TRAVERSE ALONG THE RANGE LINE FROM THE SOUTHWEST CORNER OF SECTION 31-19-7 TO THE NORTHWEST CORNER OF SECTION 18-19-7 TO DETERMINE THE SEARCH AREA FOR INVESTIGATION. EXCAVATION WITH A BACKHOE BY A.B. KIEDROWSKI, ADAMS COUNTY SURVEYOR, YIELDED NO EVIDENCE OF THE ORIGINAL CORNER OR ANY SUBSEQUENT REMONUMENTATION, COULD NOT FIND ANY BEARING TREES. RELOCATED THE CORNER BY SINGLE PROPORTIONATE MEASUREMENT ON A LINE BETWEEN ADJACENT SECTION CORNERS. SET A HARRISON MONUMENT AT THE CORNER LOCATION AND TIED OUT.

2018 - PLS 2994 FOUND HARRISON 6" BELOW THE ROAD SURFACE AND 1 TIE. THE MONUMENT AGREES WITH THE TIE. ACCEPTED THE HARRISON AS THE CORNER. SET 2 NEW TIES AND MEASURED TO THE TIES AND PROPERTY IRON.



LOCATION
(INDICATE CORNER BY "X")

SEAL:



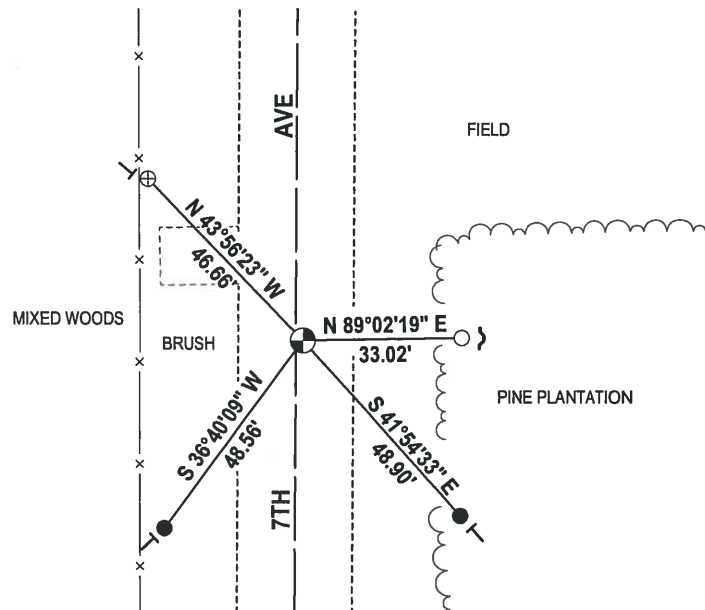
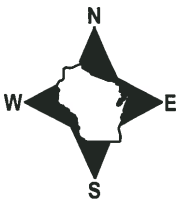
DATA SHOWN HERE ON THIS TIE SHEET IS CORRECT AND COMPLETE TO THE BEST OF MY KNOWLEDGE AND BELIEF.

PROFESSIONAL LAND SURVEYOR

DATE 3-1-18

- TIE SKETCH

NOTE: THE CORNER FALLS 1 1/2' EAST OF THE CENTERLINE OF 7TH AVE.

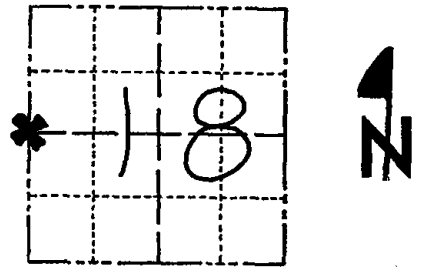


- 3/4" x 18" IRON REBAR SET, 1.50#/FT
- 3/4" IRON ROD FOUND
- ⊕ 1-1/2" WELL POINT FOUND
- ⊙ HARRISON FOUND
- ~ STEEL FENCE POST
- | VINYL "T" POST

Government Land Corner Certificate

ADAMS County
 TYPE OF MONUMENT: HARRISON STD.
 STATE PLANE COORDINATES: N _____
 E _____
 ELEVATION — M.S.L. DATUM: _____
 THETA ANGLE: _____
 FIELD BOOK: 54 PAGE 26
 DRAWN BY: SCOTT SORENSEN

CORNER NO. 54
 SECTION 18
 TOWN 19
 RANGE 7



LOCATION
 (Indicated by 'X')

BASIS FOR MONUMENT LOCATION

Show info such as: History of corner, with reference to Vol. and pg., dates, surveyor; exact description of monument replaced; if location computed, by taped or EDM traverse; landowner remarks, etc. (Use reverse side if necessary)

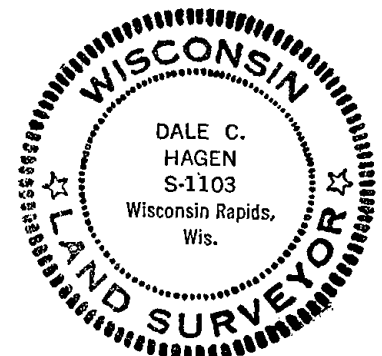
Ran EDM/T2 traverse along range line from Southwest corner of Section 31-19-7 to the Northwest corner of Section 18-19-7 to determine search area for investigation.

Excavation with backhoe by A.B. Kiedrowski, Adams County Surveyor, yielded no evidence of the original corner or any subsequent remonumentation, Could find no bearing trees.

Relocated corner by single proportionate measure on line between adjacent section corners.

Set Harrison Monument on 8-31-1977

SEAL:



DATA SHOWN HERE ON
 CERTIFIED CORRECT:

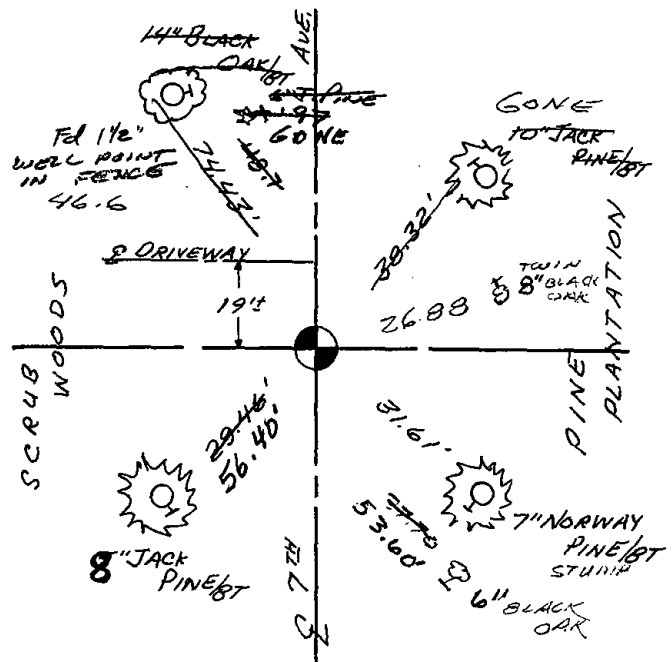
Dale Hagen
 Registered Land Surveyor
 DATE: 11-2-1977

TIE SKETCH

Show at least four ties, also fence lines, roads, topo, size and type of witness trees' and if off road - best way to arrive at corner.

NOTE

Ties in trees to nail in disc.



MAINTENANCE RECORD

Date	Init.	Remarks
8-23-82	PK-SS	Mon. O.K.
3-31-87	SS	2 NEW TREES
12-5-91	KF-JG	OK
3-7-97	JG-SS	2-NEW, COR OK
1-03-02	JG	2-GONE, 2-NEW
9-21-07	JG	OK