

15 SECTION 19 TOWN 07 RANGE

ADAMS COUNTY

COUNTY CORNER NO: 58
ROMPORTOL ID: 41907152000

PUBLIC LAND SURVEY MONUMENT RECORD

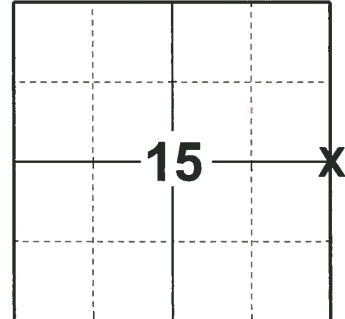
TYPE OF MONUMENT: HARRISON (BROKEN-TOP)
ADAMS COUNTY COORDINATES, NAD 83 (2007)

N. 274527.924

E. 577934.912

ELEVATION- _____ DATUM _____

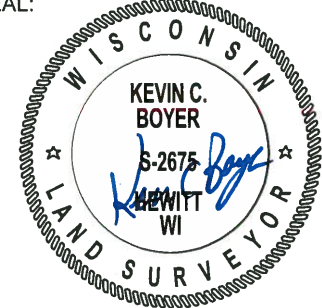
FIELD WORK DATE: 05/14/2019



LOCATION

(INDICATE CORNER BY "X")

SEAL:



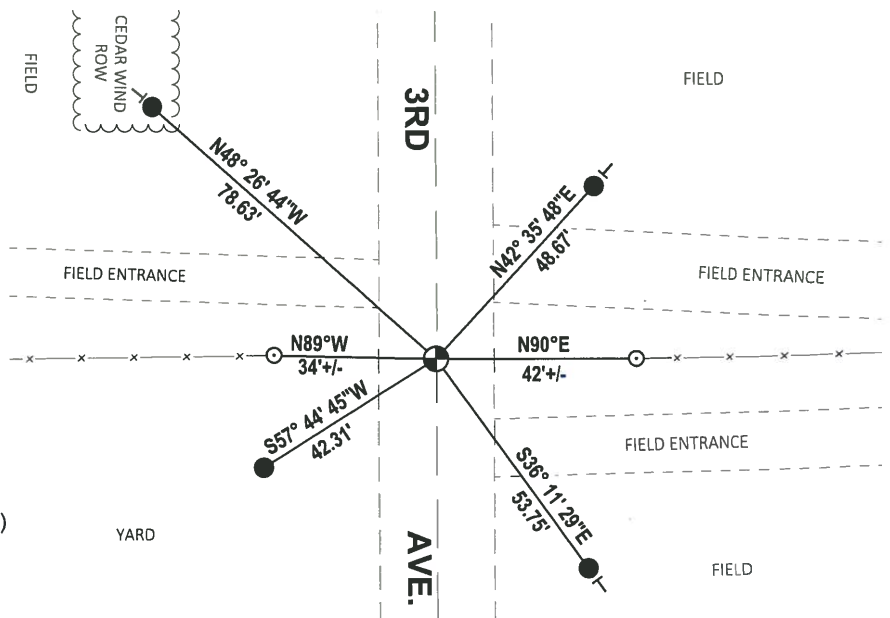
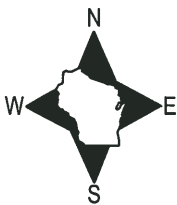
DATA SHOWN HERE ON THIS TIE SHEET IS CORRECT AND COMPLETE TO THE BEST OF MY KNOWLEDGE AND BELIEF.

PROFESSIONAL LAND SURVEYOR

DATE 6/4/19

TIE SKETCH

NOTE: THE CORNER LANDS ON THE CENTERLINE OF 3RD AVE.



- SET 3/4" x 18" IRON REBAR, 1.50#/FT
- ⊕ FOUND HARRISON MONUMENT (BROKEN-TOP)
- ⊙ MAG-NAIL IN FENCE POST
- VINYL "T" POST

ADAMS COUNTY

Survey Monument Record

TYPE OF MONUMENT: Harrison Monument / MAG NAIL

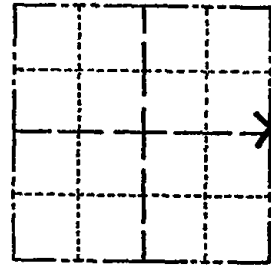
STATE PLANE COORDINATES: N _____
E _____

ELEVATION — M.S.L. DATUM: _____

THETA ANGLE: _____

FIELD BOOK: _____ PAGE _____

CORNER NO. 815 ⁽⁵⁸⁾
SECTION 15
TOWN 19
RANGE 7



LOCATION
(Indicated by 'X')

SEAL:

BASIS FOR MONUMENT LOCATION

(Use reverse side if necessary)

Show info such as: History of corner, with reference to Vol. and pg, dates, surveyor; exact description of monument replaced; if location computed, by taped or EDM traverse; landowner remarks, etc.

Ran EDM/transit traverse around Sections 1, 2, 3, 10, 11, 12, 13, 14, 15, and 24 to determine search areas for corners.

Did not excavate for corner because search area fell within slight cut area of road.

Position opposite fence lines to the East and West indicated by adjacent land owners to be the location of the corner, and fits the original notes well.



CORNER O.K. 4-26-77 GR-SS
" " 3-18-82 GR-SS
MAR. OK - NO TIES AVAILABLE 2-20-87-GR-SS
" " 1-8-92 KZ-JG
1- GONE, 2-NEW 1-04-02 JG
OK, 9-24-07- JG

CERTIFIED CORRECT:

Dale C. Hagen
Registered Land Surveyor
DATE: Nov. 5, 1975

TIE SKETCH

~~POWER POLE~~
GONE

(Show at least four ties)

NOTE:

Ties to nail in disc.

