

14
SECTION

19
TOWN

07
RANGE

ADAMS COUNTY

COUNTY CORNER NO: 59

ROMPORTOL ID: 41907142000

PUBLIC LAND SURVEY MONUMENT RECORD

TYPE OF MONUMENT: SURVEY NAIL
ADAMS COUNTY COORDINATES, NAD 83 (2007)

N. 274551.657

E. 583310.951

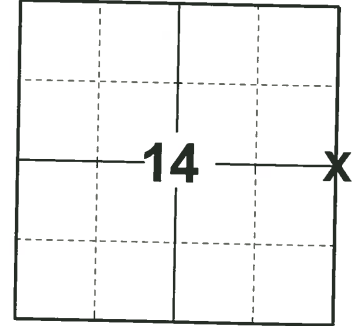
ELEVATION- DATUM

FIELD WORK DATE: 05/07/2019

BASIS FOR MONUMENT LOCATION

1975 - PLS 1103 RAN EDM/TRANSIT TRAVERSE AROUND SECTION 13 AND THE ADJACENT SECTIONS IN THE TOWN OF COLBURN, TO DETERMINE SEARCH AREAS FOR INVESTIGATION. EXCAVATION WITH BACKHOE BY A.B.KIEDROWSKI, COUNTY SURVEYOR, YIELDED NO EVIDENCE OF THE ORIGINAL CORNER OF ANY REMONUMENTATION. SET CORNER OPPOSITE FENCE TO THE WEST AND ON LINE BETWEEN ADJACENT SECTION CORNERS.

2019 - PLS 2675 DID NOT FIND ANY EVIDENCE OF A MONUMENT IN THE ROADWAY, BUT FOUND 2 WITNESS NAILS IN FENCE POSTS. USED THE 2 WITNESS NAILS TO SET A SURVEY NAIL WITH A DISTANCE-DISTANCE INTERSECTION FROM THE WITNESS NAILS AND SET 4 NEW TIES.



LOCATION

(INDICATE CORNER BY "X")

SEAL:



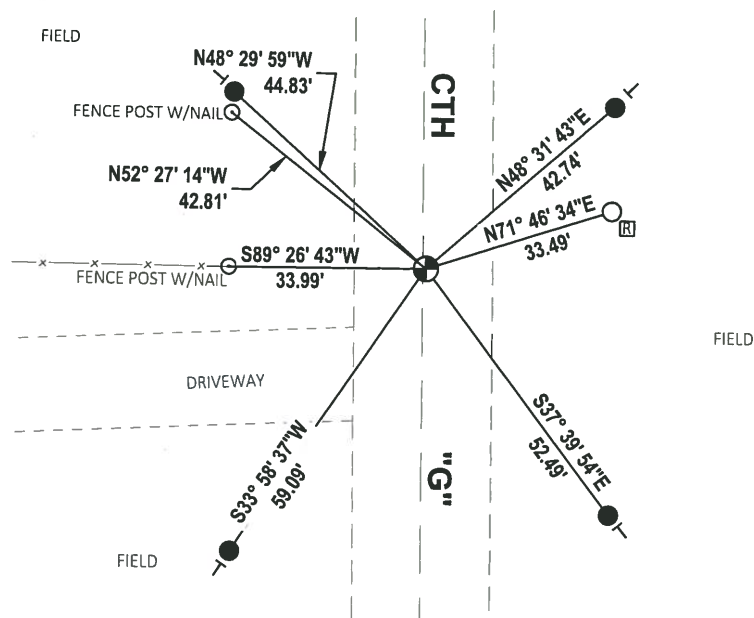
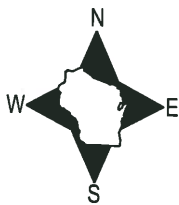
DATA SHOWN HERE ON THIS TIE SHEET IS CORRECT AND COMPLETE TO THE BEST OF MY KNOWLEDGE AND BELIEF.

PROFESSIONAL LAND SURVEYOR

DATE 6/4/19

TIE SKETCH

NOTE: THE CORNER LANDS .5± EAST OF CTH "G" CENTERLINE.



- SET 3/4" x 18" IRON REBAR, 1.50#/FT
- FOUND 3/4" IRON ROD
- SET SURVEY NAIL MONUMENT
- | VINYL "T" POST
- ▣ RIGHT OF WAY GUARD POST

ADAMS COUNTY

Survey Monument Record

TYPE OF MONUMENT: Standard Harrison

STATE PLANE COORDINATES: N _____

E _____

ELEVATION — M.S.L. DATUM: _____

THETA ANGLE: _____

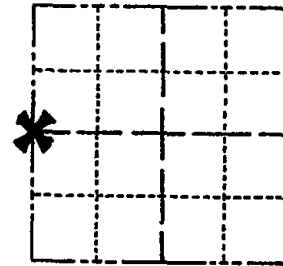
FIELD BOOK: _____ PAGE _____

CORNER NO. 831

SECTION 13

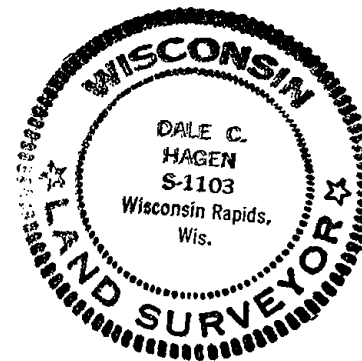
TOWN 19

RANGE 7



LOCATION
(Indicated by 'X')

SEAL:



CERTIFIED CORRECT:

Dale C. Hagen

Registered Land Surveyor

DATE: December 2, 1975

BASIS FOR MONUMENT LOCATION

(Use reverse side if necessary)

Show info such as: History of corner, with reference to Vol. and pg, dates, surveyor; exact description of monument replaced; if location computed, by taped or EDM traverse; landowner remarks, etc.

Ran EDM/transit traverse around Section 13 and the adjacent sections in the Town of Colburn, to determine search areas for investigation.

Excavation with backhoe by A.B.Kiedrowski, County Surveyor, yielded no evidence of the original corner of any remonumentation.

Set corner opposite fence to the west and on line between adjacent section corners.

CORNER	O.K.	4-26-77	GR-SS
"	"	8-24-82	PK-SS
"	"	4-6-87	GR-SS
"	"	1-8-92	KZ-JG
"	"	3-18-97	JG-SS
"	DK	1-04-02	JG

TIE SKETCH

PK, 9-24-02 JG

(Show at least four ties)

NOTE:

Ties to nail in disc.

