

ADAMS COUNTY

Survey Monument Record

TYPE OF MONUMENT: Harrison Monument

STATE PLANE COORDINATES: N _____

E _____

ELEVATION — M.S.L. DATUM: _____

THETA ANGLE: _____

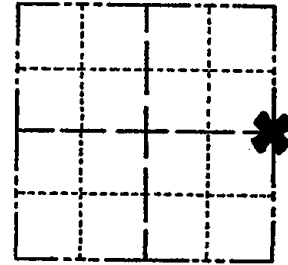
FIELD BOOK: _____ PAGE _____

CORNER NO. 814 60

SECTION 13

TOWN 19

RANGE 7



LOCATION
(Indicated by 'X')

SEAL:

BASIS FOR MONUMENT LOCATION

(Use reverse side if necessary)

Show info such as: History of corner, with reference to Vol. and pg. dates, surveyor; exact description of monument replaced; if location computed, by taped or EDM traverse; landowner remarks, etc.

Ran EDM/transit traverse around Sections 1, 2, 3, 10, 11, 12, 13, 14, 15 and 14 to determine search areas for corners.

Excavation with back-hoe by A. B. Kiedrowski, County Surveyor, yielded no evidence of the original corner or any subsequent remonumentation.

Set corner proportionally and on line between the East Quarter corner of Section 12 and the Southeast corner of Section 13.



CORNER O.K. 4-26-77 GR-SS
TOP BROKEN BUT IN PLACE 18"± BENEATH NEW
ROAD SURFACE
OK 3-18-87 SS
" 1-8-92 KZ-JC

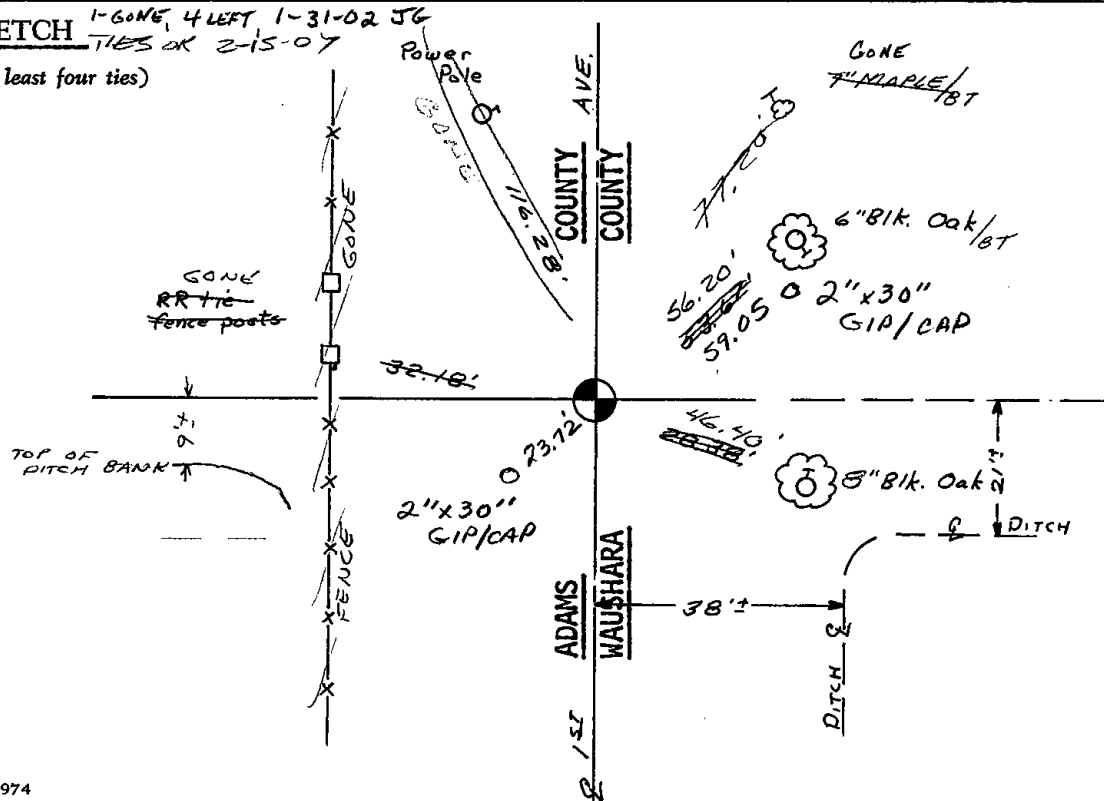
CERTIFIED CORRECT:

Dale C. Hagen
Registered Land Surveyor

DATE: Nov. 5, 1978

TIE SKETCH 1-GONE, 4 LEFT 1-31-02 JG
TIES OK 2-15-07

(Show at least four ties)



STATE OF WISCONSIN) SS
WAUSHARA COUNTY)

I, Gary E. Schindler, do hereby certify that on the 8th day of November, 1988, I found (evidence) (no evidence) of the WNY corner of Section 8.

T 19 N, R 8 E, Fourth Principal Meridian, and I re-established said corner according to the Wisconsin Statutes as shown and described hereon.

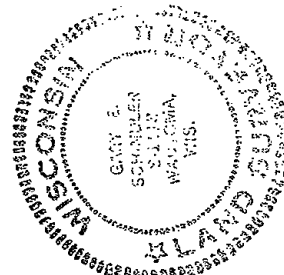
Dated this 23rd day of November, 1988.

G. E. Schindler
Waushara County Surveyor

SEE BACK FOR MAINTENANCE RECORDS

Procedure:

Added three ties and remarked



WAUSHARA COUNTY
CERTIFIED LAND CORNER

Description of corner evidence found:

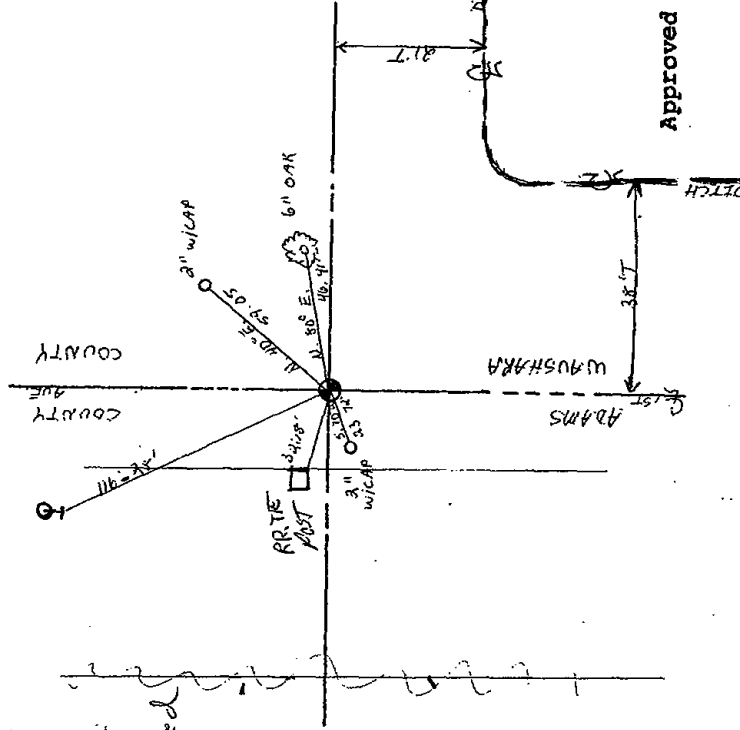
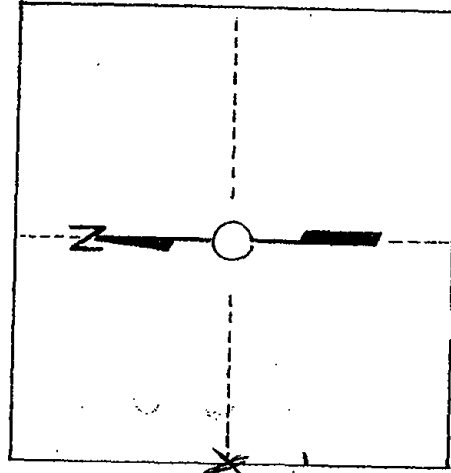
MONUMENT AND TREE TIES AS
PER ADAMS COUNTY TIE SHEET
11/5/75

No. 54

Witnesses to corner location:

MATTHEW J. SPOKA

Section 18



T. 19 N R 8 E
WISCONSIN

Approved By: _____