

18 SECTION 19 TOWN 07 RANGE

ADAMS COUNTY

COUNTY CORNER NO: 63

ROMPORTOL ID: 41907180000

PUBLIC LAND SURVEY MONUMENT RECORD

TYPE OF MONUMENT: SURVEY NAIL
ADAMS COUNTY COORDINATES, NAD 83 (2007)

N. 271873.947

E. 562142.187

ELEVATION- DATUM

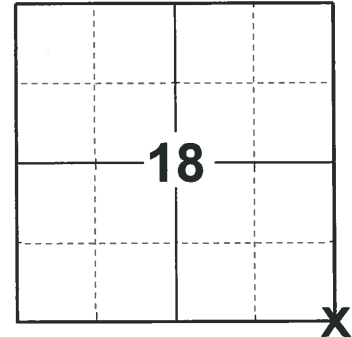
FIELD WORK DATE: 05/15/2019

BASIS FOR MONUMENT LOCATION

1977 - PLS 878 EXCAVATED WITH BACKHOE. FOUND REMAINS OF WOODEN BRIDGE PILINGS AND PLANKS. NO EVIDENCE OF A MONUMENT. CORNER SET BY ANALYZING TRAVERSE IN ALL FOUR DIRECTIONS FROM HERE, AND COMPARING WITH ORIGINAL NOTES AND POSSESSION LINES.

2000 - PLS 2281 HARRISON MONUMENT RESET AFTER COMPLETION OF COUNTY HIGHWAY C RECONSTRUCTION PROJECT. LOCATION IS BASED ON THE EXISTING MONUMENT FOUND BEFORE CONSTRUCTION BEGAN.

2019 - PLS 2675 FOUND MAG NAIL IN THE ROAD SURFACE AND 4 TIES, REMOVED THE MAG NAIL AND FOUND NO OTHER EVIDENCE OF ADDITIONAL MONUMENTS BELOW. THE MAG NAIL LOCATION AGREES WITH ALL 4 TIES. ACCEPTED THE MAG NAIL AS THE CORNER LOCATION. SET A SURVEY NAIL AT THE MAG NAIL LOCATION AND MEASURED TO THE EXISTING TIES.



LOCATION

(INDICATE CORNER BY "X")

SEAL:



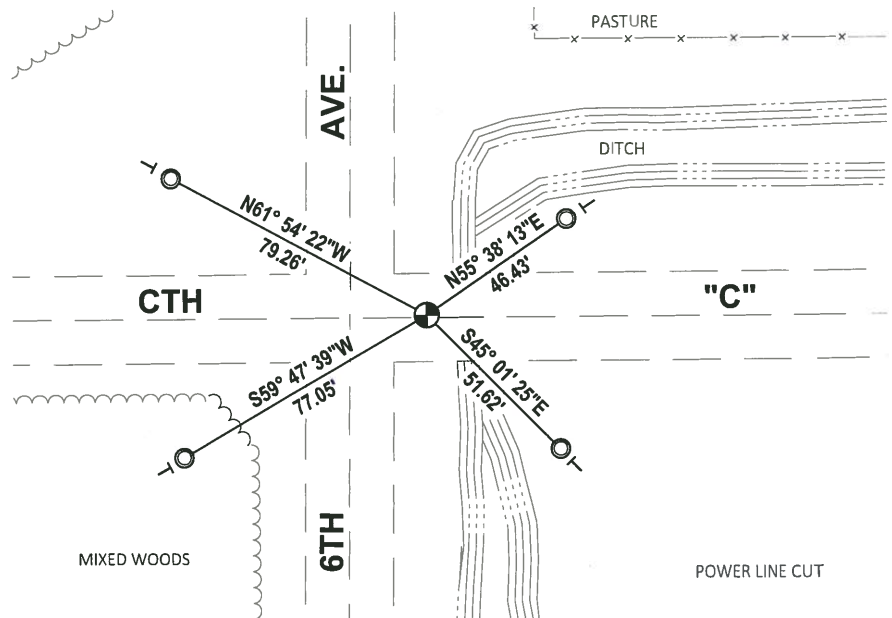
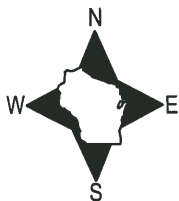
DATA SHOWN HERE ON THIS TIE SHEET IS CORRECT AND COMPLETE TO THE BEST OF MY KNOWLEDGE AND BELIEF.

PROFESSIONAL LAND SURVEYOR

DATE 6/4/19

- TIE SKETCH

NOTE: THE CORNER LANDS .5± NORTH OF CTH "C" CENTERLINE AND 20± EAST OF 6TH AVE. CENTERLINE.



- FOUND 1-1/4" O.D. IRON PIPE
- ⊕ SET SURVEY NAIL MONUMENT
- VINYL "T" POST

ADAMS COUNTY U.S. PUBLIC LAND SURVEY

MONUMENT LOCATION RECORD

LANDMARK BENCHMARK

CORNER IDENTITY: SOUTH EAST QUATER CONER

STATE PLANE COORDINATE: N: _____

E: _____

ZONE: _____

ELEVATION: _____

DATUM: _____

THETA ANGLE: _____

WEATHER: SUNNY/COLD TEMPERATURE: 58° F

DATE OF SURVEY: 11/4/99

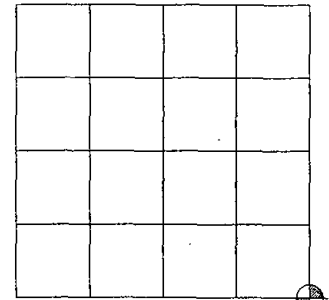
SURVEY PARTY: MARK HINTZ / CHRIS THORSON

- FOUND
- SET
- RE-SET
- RE-TIED



CORNER # 63
 SECTION 18
 TOWNSHIP 19 NORTH
 RANGE 7 EAST

SECTION 18



LOCATION

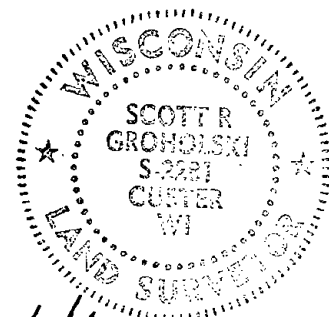
BASIS FOR MONUMENT LOCATION:

(DESCRIBE METHOD OF SURVEY AND CORNER AUTHENTICATION)

HARRISON MONUMENT RESET AFTER COMPLETION OF COUNTY HIGHWAY C RECONSTRUCTION PROJECT. LOCATION IS BASED ON THE EXISTING MONUMENT FOUND BEFORE CONSTRUCTION BEGAN.

OK, 9-24-07-J6

SEAL



SCOTT GROHOLSKI (RLS #2281)

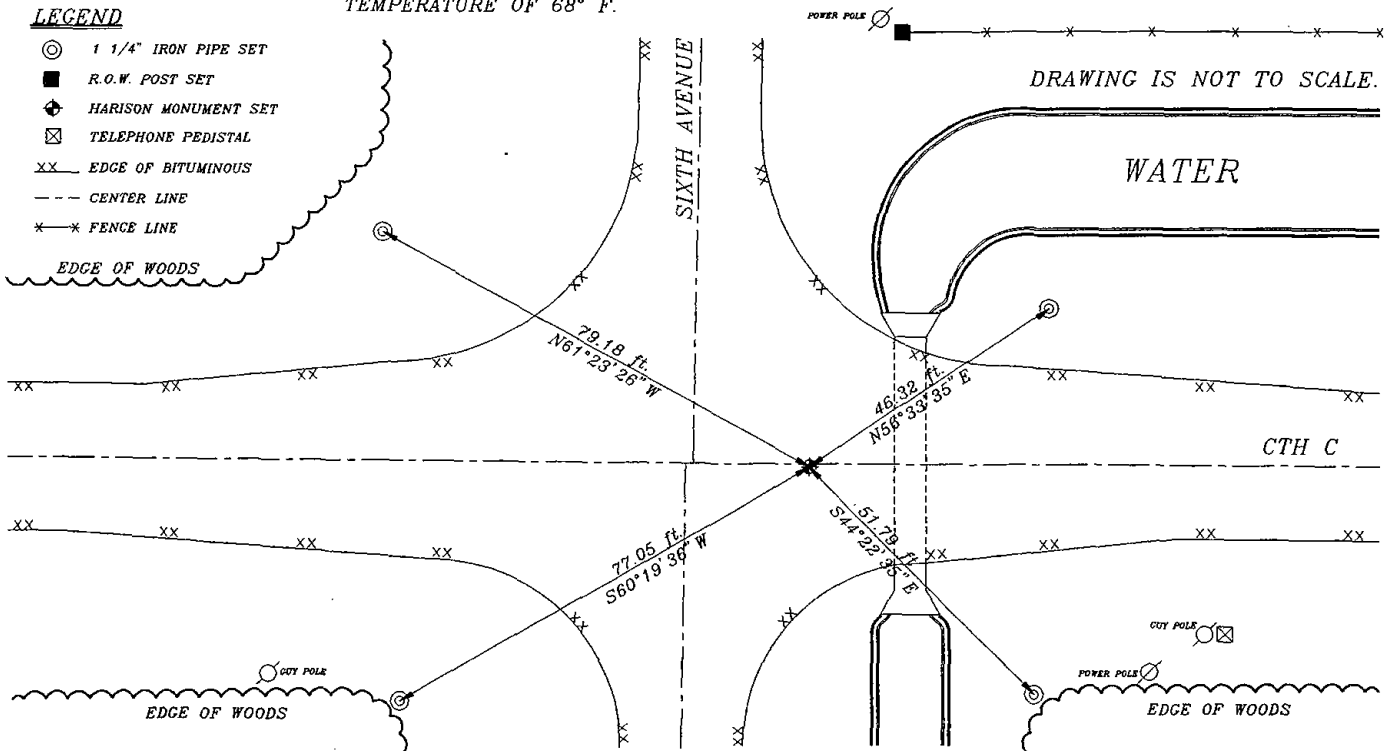
DATE 1/11/00

TIE SKETCH:

SHOW MINIMUM OF FOUR (4) HORIZONTAL TIE DISTANCES TO FIXED WITNESS MONUMENTS. DESCRIBE ALL MONUMENTS FOUND OR SET. CORRECT ALL DISTANCES SHOWN TO STANDARD TEMPERATURE OF 68° F.

LEGEND

- ⊙ 1 1/4" IRON PIPE SET
- R.O.W. POST SET
- ⊕ HARRISON MONUMENT SET
- ⊗ TELEPHONE PEDISTAL
- XX EDGE OF BITUMINOUS
- - - CENTER LINE
- *-* FENCE LINE
- ~~~~~ EDGE OF WOODS

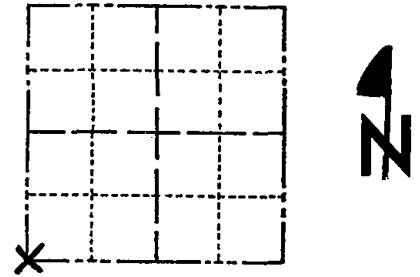


DRAWING IS NOT TO SCALE.

Government Land Corner Certificate

ADAMS County
 TYPE OF MONUMENT: HARRISON
 STATE PLANE COORDINATES: N _____
 E _____
 ELEVATION — M.S.L. DATUM: _____
 THETA ANGLE: _____
 FIELD BOOK: 57 PAGE 13
 DRAWN BY: LANCE HARECK

CORNER NO. 63
 SECTION 17
 TOWN 19N
 RANGE 7E



LOCATION
(Indicated by 'X')

BASIS FOR MONUMENT LOCATION

Show info such as: History of corner, with reference to Vol. and pg., dates, surveyor; exact description of monument replaced; if location computed, by taped or EDM traverse; landowner remarks, etc. (Use reverse side if necessary)

Excavated with backhoe. Found remains of wooden bridge pilings and planks. No evidence of a monument. Corner set by analyzing traverse in all four directions from here, and comparing with original notes and possession lines.

SEAL:



DATA SHOWN HERE ON
CERTIFIED CORRECT:

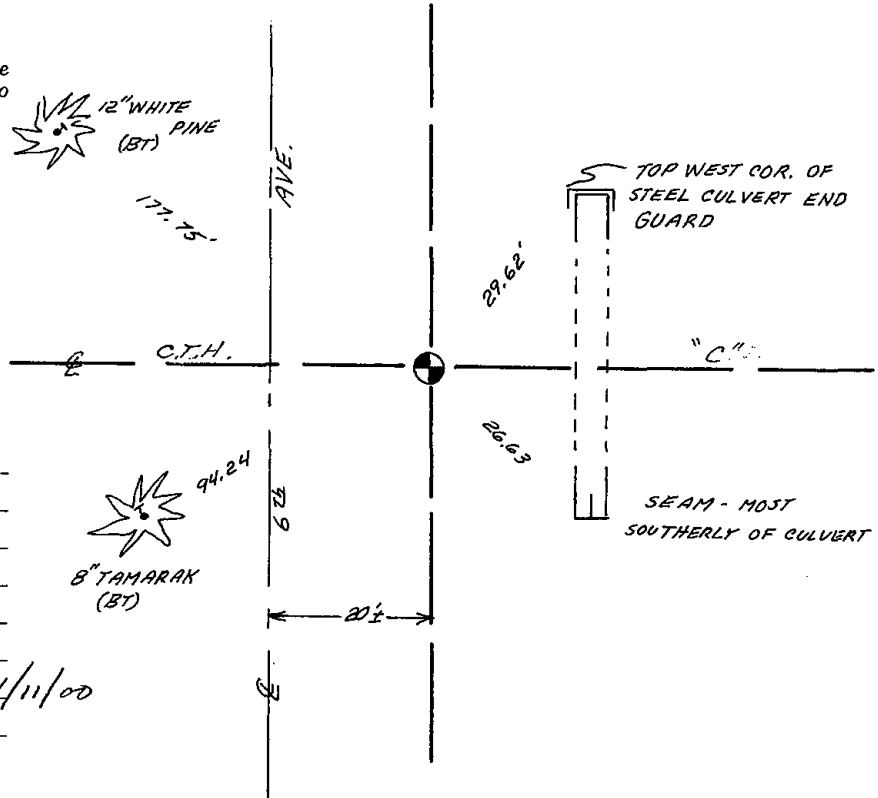
Anthony B. Kiedrowski
Registered Land Surveyor

DATE: 8/11/77

TIE SKETCH

Show at least four ties, also fence lines, roads, topo, size and type of witness trees' and if off road - best way to arrive at corner.

Ties to nail and bottle cap.



MAINTENANCE RECORD

Date	Init.	Remarks
3-17-82	GR-SS	All O.K.
2-9-87	GR-SS	OK
12-5-91	KZJG	OK
3-7-97	JG-SS	OK
SEE ATTACHED SHEET GROMOLSKI, 1/11/00		
1-04-02	JG	ALL OK