

17 SECTION 19 TOWN 07 RANGE

ADAMS COUNTY

COUNTY CORNER NO: 64

ROMPORTOL ID: 41907170020

PUBLIC LAND SURVEY MONUMENT RECORD

TYPE OF MONUMENT: SURVEY NAIL
ADAMS COUNTY COORDINATES, NAD 83 (2007)

N. 271881.307

E. 564792.670

ELEVATION- DATUM

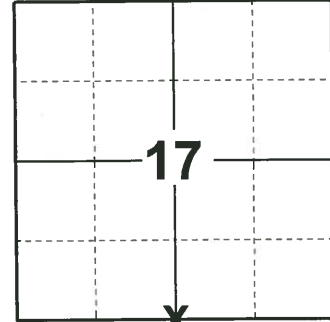
FIELD WORK DATE: 05/15/2019

BASIS FOR MONUMENT LOCATION

1978 - PLS 878 EXCAVATED WITH BACKHOE AND FOUND NOTHING. SET MONUMENT EQUIDISTANT AND ON LINE BETWEEN ADJACENT SECTION CORNERS.

2000 - PLS 2281 HARRISON MONUMENT RESET AFTER COMPLETION OF COUNTY HIGHWAY C RECONSTRUCTION PROJECT. LOCATION IS BASED ON THE EXISTING MONUMENT FOUND BEFORE CONSTRUCTION BEGAN.

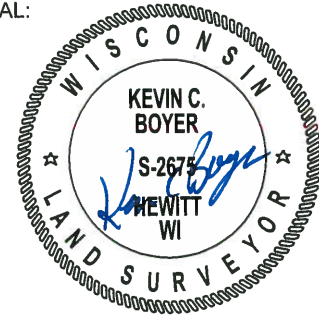
2019 - PLS 2675 FOUND MAG NAIL IN THE ROAD SURFACE AND 4 TIES, REMOVED THE MAG NAIL AND FOUND NO OTHER EVIDENCE OF ANY ADDITIONAL MONUMENTS BELOW. THE MAG NAIL LOCATION AGREES WITH ALL 4 TIES. ACCEPTED THE MAG NAIL LOCATION AS THE CORNER LOCATION. SET A SURVEY NAIL IN THE MAG NAIL LOCATION AND MEASURED TO THE EXISTING TIES.



LOCATION

(INDICATE CORNER BY "X")

SEAL:



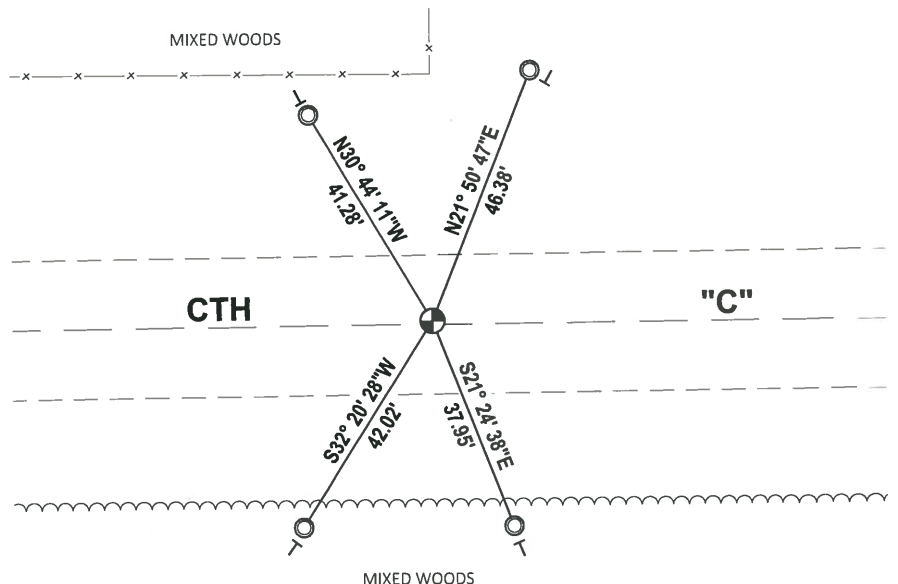
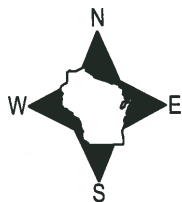
DATA SHOWN HERE ON THIS TIE SHEET IS CORRECT AND COMPLETE TO THE BEST OF MY KNOWLEDGE AND BELIEF.

PROFESSIONAL LAND SURVEYOR

DATE 6/4/19

TIE SKETCH

NOTE: THE CORNER LANDS .5± NORTH OF CTH "C" CENTERLINE.



- FOUND 1-1/4" O.D. IRON PIPE
- SET SURVEY NAIL MONUMENT
- ⊥ VINYL "T" POST

ADAMS COUNTY U.S. PUBLIC LAND SURVEY

MONUMENT LOCATION RECORD

LANDMARK BENCHMARK:

CORNER IDENTITY: SOUTH QUATER CONER

STATE PLANE COORDINATE: N: _____

E: _____

ZONE: _____

ELEVATION: _____

DATUM: _____

THETA ANGLE: _____

WEATHER: SUNNY/COLD TEMPERATURE: 58° F

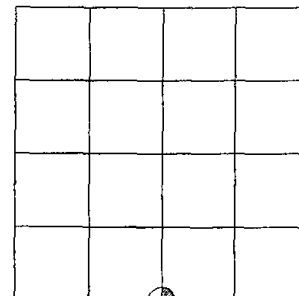
DATE OF SURVEY: 11/4/99

SURVEY PARTY: MARK HINTZ / CHRIS THORSON

- FOUND
- SET
- RE-SET
- RE-TIED



CORNER # 64
 SECTION 17
 TOWNSHIP 19 NORTH
 RANGE 7 EAST
 SECTION 15



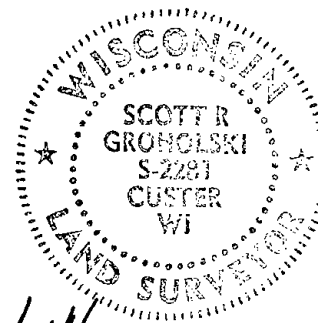
LOCATION

BASIS FOR MONUMENT LOCATION:

(DESCRIBE METHOD OF SURVEY AND CORNER AUTHENTICATION)

HARRISON MONUMENT RESET AFTER COMPLETION OF COUNTY HIGHWAY C RECONSTRUCTION PROJECT. LOCATION IS BASED ON THE EXISTING MONUMENT FOUND BEFORE CONSTRUCTION BEGAN.

SEAL



SCOTT GROHOLSKI (RLS #2281)

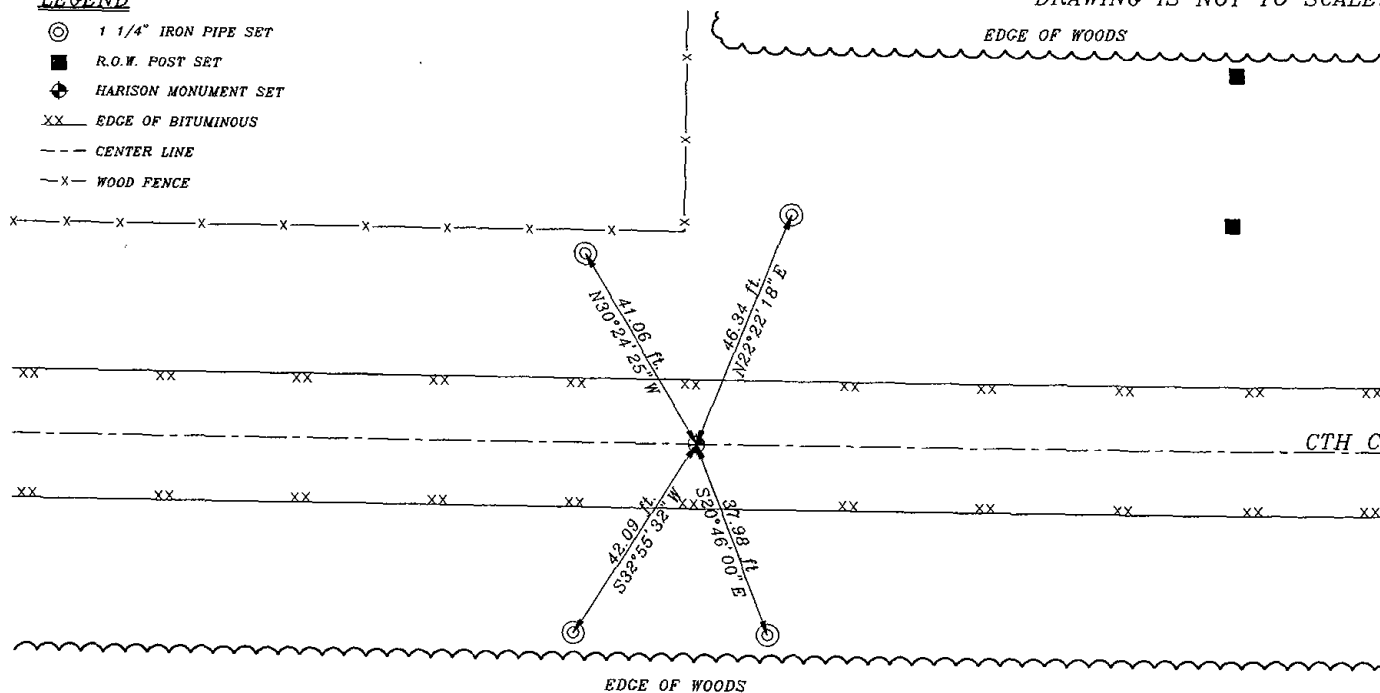
DATE 1/11/06

TIE SKETCH:

SHOW MINIMUM OF FOUR (4) HORIZONTAL TIE DISTANCES TO FIXED WITNESS MONUMENTS. DESCRIBE ALL MONUMENTS FOUND OR SET. CORRECT ALL DISTANCES SHOWN TO STANDARD TEMPERATURE OF 68° F. DRAWING IS NOT TO SCALE.

LEGEND

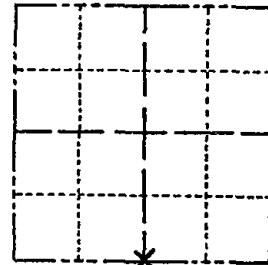
- ⊙ 1 1/4" IRON PIPE SET
- R.O.W. POST SET
- ⊕ HARRISON MONUMENT SET
- xx EDGE OF BITUMINOUS
- CENTER LINE
- x- WOOD FENCE



Government Land Corner Certificate

ADAMS County
 TYPE OF MONUMENT: HARRISON
 STATE PLANE COORDINATES: N _____
 E _____
 ELEVATION — M.S.L. DATUM: _____
 THETA ANGLE: _____
 FIELD BOOK: 57 PAGE 16
 DRAWN BY: LANCE HABECK

CORNER NO. 64
 SECTION 17
 TOWN 19 N
 RANGE 7 E



LOCATION
 (Indicated by 'X')

BASIS FOR MONUMENT LOCATION

Show info such as: History of corner, with reference to Vol. and pg., dates, surveyor; exact description of monument replaced; if location computed, by taped or EDM traverse; landowner remarks, etc. (Use reverse side if necessary)

Set monument equidistant and on line between adjacent section corners.

*Excavated with back hoe.
 Found nothing.*

SEAL:



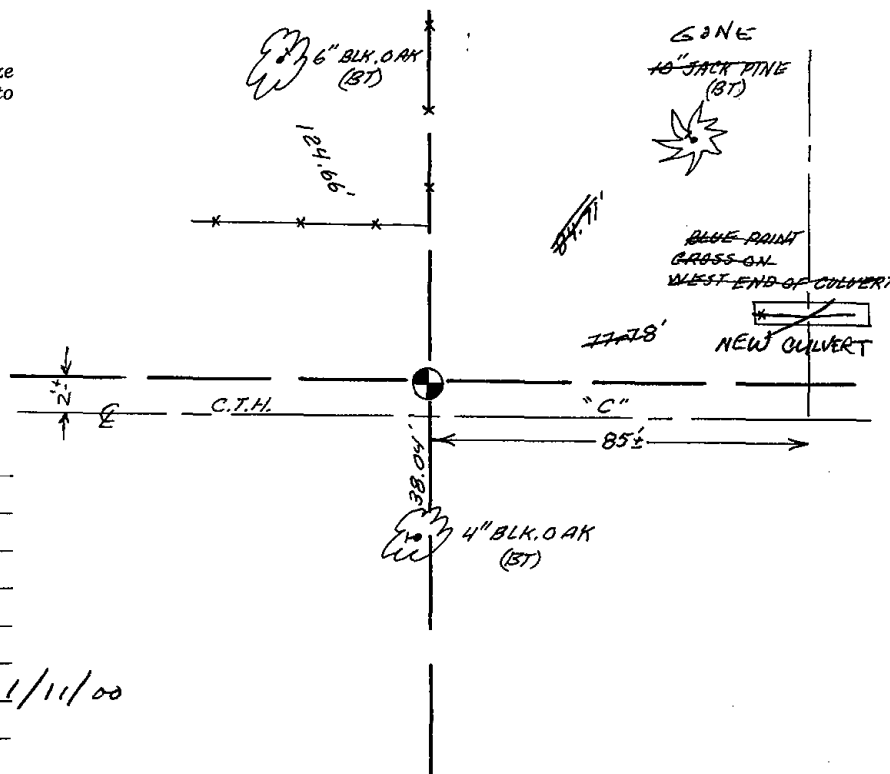
DATA SHOWN HERE ON
 CERTIFIED CORRECT:

Anthony B. Kiedrowski
 Registered Land Surveyor

DATE: 3/6/78

TIE SKETCH

Show at least four ties, also fence lines, roads, topo, size and type of witness trees' and if off road - best way to arrive at corner.



MAINTENANCE RECORD

Date	Init.	Remarks
8-23-82	PK-SS	O.K.
2-9-87	GL-SS	OK
1-8-92	KZ-JG	OK
3-7-97	JG-SS	OK
SEE ATTACHED SHEET, GROHOLSKI, 1/11/00		
1-04-02	JG	2-GONE