

17 SECTION 19 TOWN 07 RANGE

ADAMS COUNTY

COUNTY CORNER NO: 65
ROMPORTOL ID: 41907170000

PUBLIC LAND SURVEY MONUMENT RECORD

TYPE OF MONUMENT: ADAMS COUNTY ALUMINUM CAP
ADAMS COUNTY COORDINATES, NAD 83 (2007)

N. 271891.824

E. 567445.179

ELEVATION- - - - - DATUM - - - - -

FIELD WORK DATE: 05/15/2019

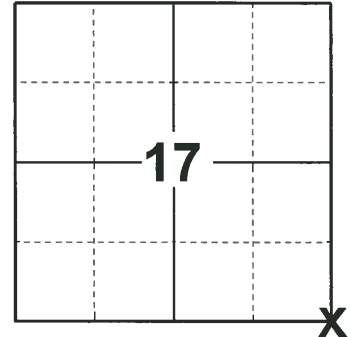
BASIS FOR MONUMENT LOCATION

1977 - PLS 878 ABK DUG WITH BACKHOE AND FOUND THREE POSTS NEXT TO EACH OTHER. EDM/T2 TRAVERSE WAS RUN TO DETERMINE SEARCH AREAS IN THE VICINITY. THIS SPOT WAS MONUMENT WITH A STANDARD HARRISON MONUMENT.

1990 - PLS 1821 ACCEPTED THE LOCATION BY A.B. KIEDROWSKI. THE SOUTHWEST AND SOUTHEAST ASPEN TREES WERE DEAD. THE NORTHWEST AND NORTHEAST TIES WERE FOUND AS RECORDED. I REREFERENCED AS SHOWN BELOW.

2000 - PLS 2281 HARRISON MONUMENT RESET AFTER COMPLETION OF COUNTY HIGHWAY C RECONSTRUCTION PROJECT. LOCATION IS BASED ON THE EXISTING MONUMENT FOUND BEFORE CONSTRUCTION BEGAN.

2019 - PLS 2675 FOUND MAG NAIL IN THE ROAD SURFACE, REMOVED AND FOUND ADAMS COUNTY ALUMINUM CAP 6" BELOW THE ROAD SURFACE, AND 4 TIES. THE MONUMENT AGREES WITH 3 OF THE 4 TIES. ACCEPTED THE ADAMS COUNTY ALUMINUM CAP AS THE CORNER LOCATION. SET 1 NEW TIE AND MEASURED TO THE EXISTING TIES.



LOCATION

(INDICATE CORNER BY "X")

SEAL:



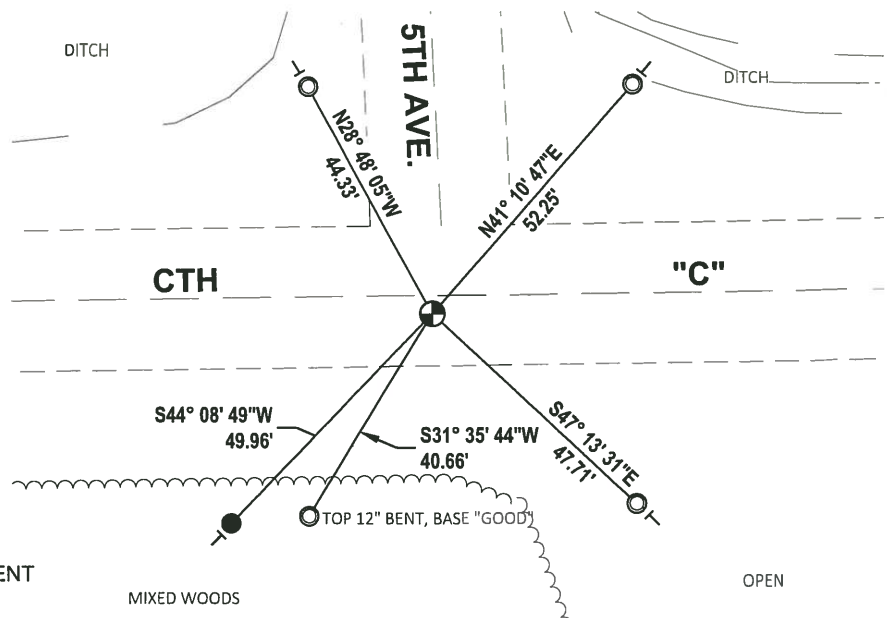
DATA SHOWN HERE ON THIS TIE SHEET IS CORRECT AND COMPLETE TO THE BEST OF MY KNOWLEDGE AND BELIEF.

PROFESSIONAL LAND SURVEYOR

DATE 6/4/19

- TIE SKETCH

NOTE: THE CORNER LANDS 3± SOUTH OF CTH "C" CENTERLINE AND 2± WEST OF 5TH AVE. CENTERLINE.

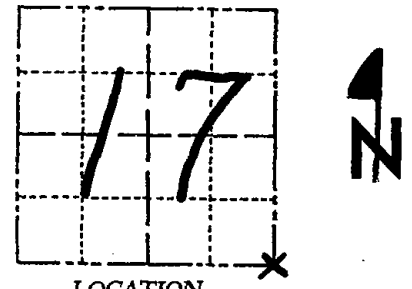


- SET 3/4" x 18" IRON REBAR, 1.50#/FT
- FOUND 1-1/4" O.D. IRON PIPE
- ⊕ FOUND ADAMS CO. ALUMINUM CAP MONUMENT
- └ VINYL "T" POST

Government Land Corner Certificate

ADAMS County
 TYPE OF MONUMENT: HARRISON
 STATE PLANE COORDINATES: N _____
 E _____
 ELEVATION — M.S.L. DATUM: _____
 THETA ANGLE: _____
 FIELD BOOK: 57 PAGE 12
 DRAWN BY: LANCE HABECK

CORNER NO. 65
 SECTION 17
 TOWN 19 N
 RANGE 7 E



LOCATION
(Indicated by 'X')

BASIS FOR MONUMENT LOCATION

Show info such as: History of corner, with reference to Vol. and pg., dates, surveyor; exact description of monument replaced; if location computed, by taped or EDM traverse; landowner remarks, etc. (Use reverse side if necessary)

ABK dug with backhoe and found three posts next to each other. **extensive** EDM/T2 traverse was run to determine search areas in the vicinity.

This spot was monumented with a standard Harrison monument.

SEAL:



DATA SHOWN HERE ON CERTIFIED CORRECT:

Anthony B. Kiedrowski
Registered Land Surveyor

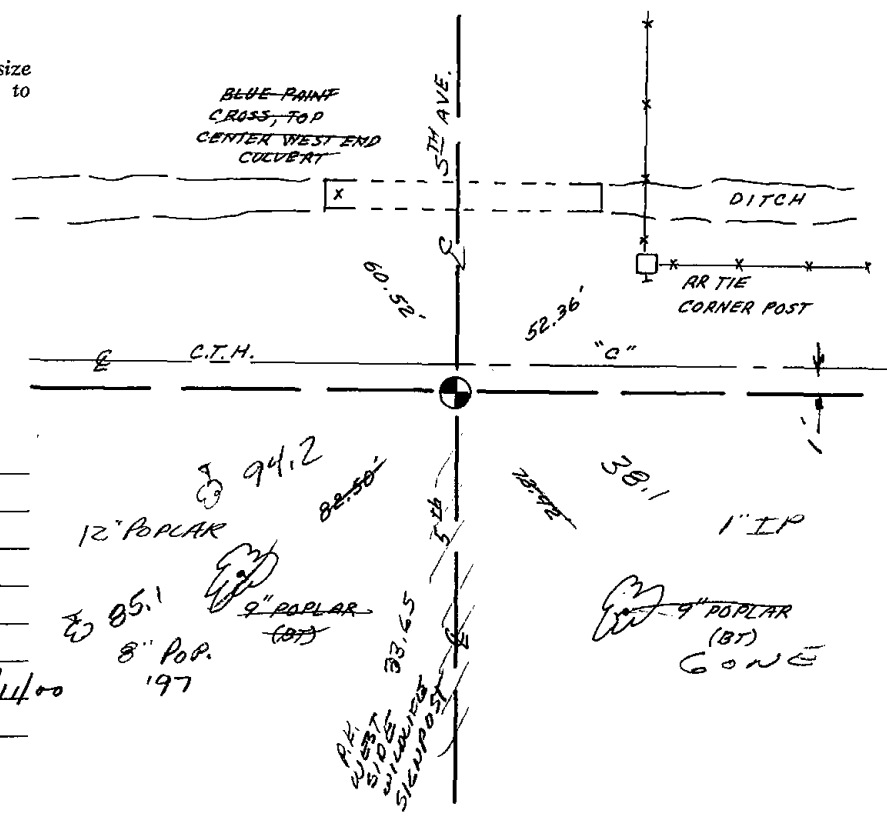
DATE: 8/11/22

SEE VISSER 7/5/90 NEXT PAGE

TIE SKETCH

Show at least four ties, also fence lines, roads, topo, size and type of witness trees' and if off road - best way to arrive at corner.

Ties to nail and bottle cap.



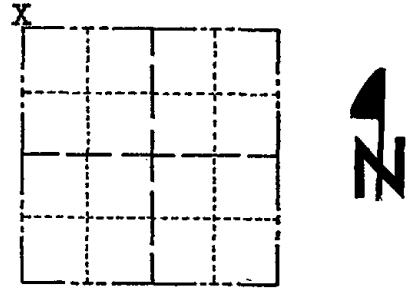
MAINTENANCE RECORD

Date	Init.	Remarks
8-23-82	PK-SS	O.K.
2-9-87	GR-SS	OK
1-8-92	KZ-36	OK
12-20-97	JG-SS	3 NEW TIES
SEE ATTACHED SHEET, GROHOLSKI, 1/11/00		
1-04-02	JG	ARR OK

Government Land Corner Certificate

ADAMS County
 TYPE OF MONUMENT: HARRISON
 STATE PLANE COORDINATES: N _____
 E _____
 ELEVATION — M.S.L. DATUM: _____
 THETA ANGLE: _____
 FIELD BOOK: _____ PAGE _____
 DRAWN BY: N.L. VISSERS

CORNER NO. 65
 SECTION 21
 TOWN 19N
 RANGE 7E



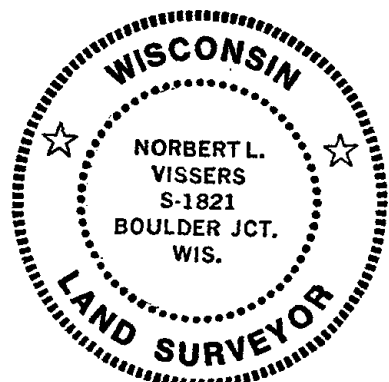
LOCATION
(Indicated by 'X')

BASIS FOR MONUMENT LOCATION

Show info such as: History of corner, with reference to Vol. and pg., dates, surveyor; exact description of monument replaced; if location computed, by taped or EDM traverse; landowner remarks, etc. (Use reverse side if necessary)

I accepted the location by Kiedrowski.
 The Southwest and Southeast Aspen trees were dead.
 The Northwest and Northeast ties were found as recorded.
 I rereferenced as shown below.

SEAL:



DATA SHOWN HERE ON CERTIFIED CORRECT:

Norbert L. Viissers
Registered Land Surveyor

DATE: July 5, 1990

TIE SKETCH

Show at least four ties, also fence lines, roads, topo, size and type of witness trees and if off road - best way to arrive at corner.

